

A Citizen's Guide to Curbing Polluted Runoff

Polluted runoff occurs when it rains or snow melts and the water washes over roads, parking lots, lawns, and sidewalks, removing the oil, debris, soil, and fertilizer from those surfaces and into waterways. Polluted runoff can be reduced significantly if everyone incorporates small preventative measures into their regular activities. It's up to all of us to keep our lakes, streams, and Long Island Sound clean.

Here are a few tips:



Wash your car on grass or gravel surfaces instead of on paved streets. Or take it to a commercial car wash where the water is treated and recycled.



Take a pooper scooper or plastic bag along on your next walk. Flush only the waste, or if local laws allow it, seal it in a plastic bag and dispose of it in the garbage.

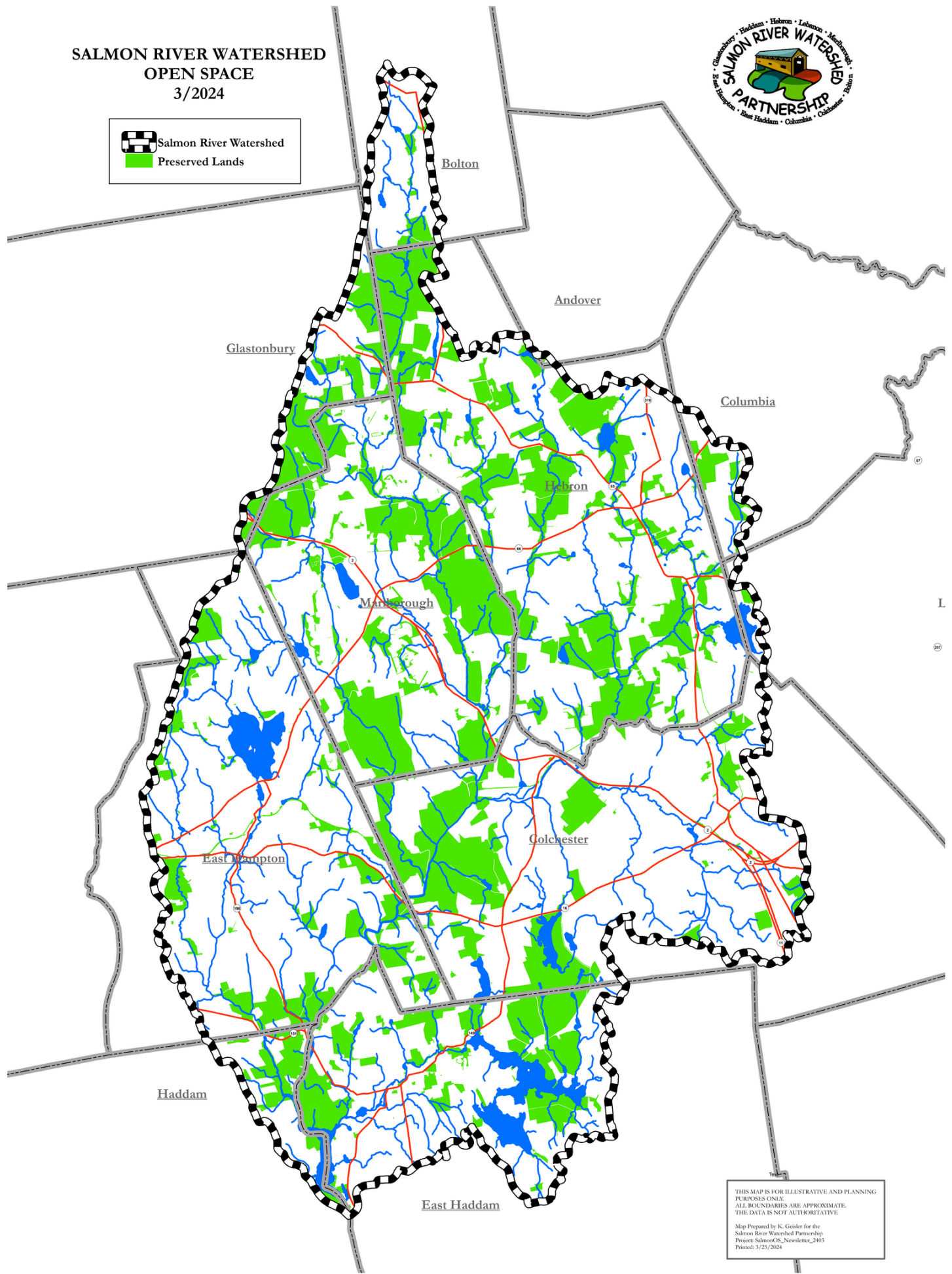


Test your soil before fertilizing your lawn and if needed, avoid applying it before a rainstorm, use it sparingly, and use organic, slow-release fertilizers.



Check your car often for drips and oil leaks and fix them promptly and never dump motor oil or other engine fluid down a storm drain or into the ground.

For more information, visit Long Island Sound Study: A Partnership to Restore and Protect the Sound



THE WATERSHED

The Salmon River Watershed is a 149 square miles and comprised of land from 10 towns. It is especially known for its clean cold -water streams, fisheries habitat, preserved forest and agricultural land, abundant wildlife, and recreation.

Rivers, streams, brooks and creeks of the Watershed...

- Bigelow Brook
- Blackledge River
- Cabin Brook
- Cattle Lot Brook
- Christopher Brook
- Day Meadow Brook
- Day Pond Brook
- Dickinson Creek
- Elbow Brook
- Fawn Brook (includes East Branch)
- Fawn Brook (West Branch)
- Fawn Hill Brook
- Flat Brook (East Hampton)
- Flat Brook (Marlborough)
- Foots Sawmill Brook
- French Brook
- Gillette Brook
- Green River
- Hale Brook
- Jeremy River
- Judd Brook
- Meadow Brook
- Mint Brook
- Moodus River
- Muddy Brook
- Gutter Brook
- Pine Brook (Colchester)
- Pine Brook (East Hampton)
- Pine Brook (Haddam & East Haddam)
- Raymond Brook
- Safstrom Brook
- Salmon River



OUR VOLUNTEERS...

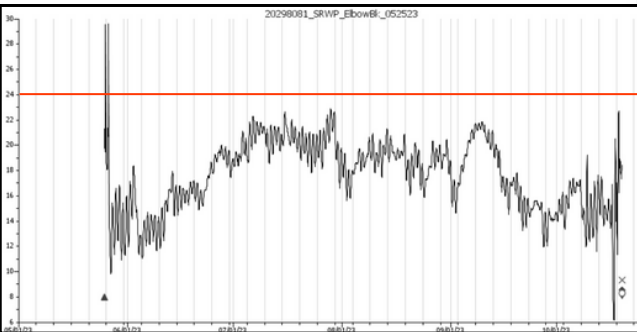
SRWP is fortunate to have many dedicated volunteers. If you are interested in volunteering, please see some of the opportunities described below:



Summer Baseline Stream Monitoring: SRWP has been monitoring summer stream water quality conditions for the last 12 summers. We measure water temperature, dissolved oxygen, pH, conductivity, total dissolved solids and salinity using hand-held meters. Summer is an especially challenging time for fish and other critters that live in our local waterways. Establishing baseline data levels allows us to monitor change over time.



Fall Stream Assessments: This is a community volunteer program that follows CT DEEP protocol to collect and ID benthic macroinvertebrates. Certain species of caddisflies, stoneflies and mayflies are intolerant of water pollution and are therefore good indicators of water quality and stream health. Volunteers work alongside SRWP field leaders to conduct field assessments.



Elbow Brook, East Hampton temperature stream logger graph (pictured above). Red line depicts 24°C at which juvenile brook trout will perish.

To Learn More...

Website: www.salmonriverct.org
Facebook: Salmon River Watershed Partnership
Instagram: salmonriverct
Email: salmonriverct@att.net

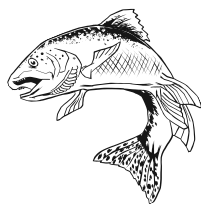


*Healthy Watershed
Healthy Communities*



Photo courtesy of Stan Malcom

Working with the towns of Bolton, Colchester, Columbia, East Haddam, East Hampton, Glastonbury, Haddam, Hebron, Lebanon and Marlborough



Our thanks to...

The efforts of the Salmon River Watershed Partnership would not be possible without the support of many volunteers, the watershed towns and local businesses and organizations. Special thanks to...

- GZA GeoEnvironmental Inc. ● CME Associates
- Goodwin College ● UCONN Soil & Water Conservation Club ● Ken Geisler ● CT River Coastal Conservation District ● Department of Energy and Environmental Protection ● The Nature Conservancy ● Society of Women Environmental Professionals ● USGS ● Mystic Aquarium ● Moodus Sportsmen's Club ● UCONN Master Gardeners ● Stan Malcom



 Printed on Recycled Paper

WHO IS SRWP?

The Salmon River Watershed Partnership is a collaboration of local watershed towns in partnership with other local and state organizations including the Colchester Land Trust, CT Department of Energy and Environmental Protection, The Nature Conservancy and Trout Unlimited.

SRWP works collectively to manage the resources of the watershed across municipal lines, focusing on water quality, land-use management, preservation and outreach and education. It is a program under CT Resource and Conservation Area, Inc., a qualified 501(3)(c) non-profit. SRWP is primarily funded through the watershed towns.



SOME OF OUR PROJECTS & PROGRAMS

- Baseline Summer Water Quality Monitoring (1)
- Stream Road Culvert Survey (2)
- Watershed Resource and Preserved Lands Mapping (2)
- Stream Temperature Mapping using stream loggers (2)
- Stream Conductivity Monitoring using stream loggers (2)
- Fall Stream Assessments Using Benthic Macroinvertebrates (1, 2)
- River Clean-ups (1, 2)
- Community and School Programs and Events
- Riparian Planting (2)
- Municipal Support for Grant Applications and Sustainable CT certification.
- Review of Statewide Policies for Watershed Impact



(1) denotes opportunities for community volunteers
(2) denotes projects with other partner organizations or businesses