



CT DEEP

Riffle Bioassessment by Volunteers

Volunteer Water Monitoring Program



2021 Annual Program Report (Report #23)

To Learn more about RBV visit:
<https://portal.ct.gov/DEEP-RBVProgram>





Riffle Bioassessment by Volunteers (RBV) Program -2021 Summary Report

Table of Contents

Introduction.....	1
Local RBV Programs and Leaders.....	2
2021 Monitoring Results	3
2021 Results Map.....	4
2021 Results Table	5-10
Interpreting Your RBV Results	11
2021 RBV Data Impact.....	12

Appendix A: RBV Monitoring Station Descriptions and Details



*Above: Volunteers sample Big Brook in Salem, Connecticut.
Photo courtesy of the Eightmile River Wild & Scenic Watershed.*

Front Cover Photos: Top Left: New Local RBV Coordinators, Paige Vichiola of the Farmington River Watershed Association and Roberta Barbieri of the Ridgefield Conservation Commission at Miry Brook in Danbury, Connecticut. Top Right: A volunteer sorts a tray at Blackwell Brook. (Photo courtesy The Last Green Valley). Bottom Left: Hailey McKeever and Carol Haskins participate in an RBV effort at Reichenbach Brook. (Photo courtesy of the Pomperaug River Watershed Coalition.) Bottom Right: A volunteer celebrates finding a lot of most wanted types at Blackwell Brook. (Photo courtesy of The Last Green Valley.) **Page 2 Photo:** Salmon River Watershed Partnership volunteers found a total of 13 most wanted types at Elbow Brook – this year’s record! (Photo courtesy of the Salmon River Watershed Partnership).

Introduction

RBV: A Treasure Hunt for CT's Healthiest Streams!

The CT DEEP Riffle Bioassessment by Volunteers or “RBV” Program is an annual fall ‘treasure hunt’ for Connecticut’s healthiest streams. CT DEEP uses the data collected by RBV volunteers to expand its inventory of excellent small, high gradient Connecticut streams that have excellent water quality – our “Healthy Streams” list.

RBV volunteers examine the water quality of local stream segments by studying the aquatic benthic macroinvertebrate community present in rocky or ‘riffle’ areas of these streams.

If volunteers can find four or more pollution sensitive or ‘most wanted’ macroinvertebrates, CT DEEP can use this data to assess that stream as fully supporting water quality standards for aquatic life use – documenting it as one of CT’s healthiest streams! (Because it is a screening approach and not a more in-depth assessment methodology, RBV cannot provide a detailed water quality assessment, nor can it be used to identify low or impaired water quality.)

To learn more contact:

Meghan Lally
State RBV Program Coordinator
DEEP.RBVProgram@ct.gov
860-424-3061
[https://portal.ct.gov/
DEEP-RBVProgram](https://portal.ct.gov/DEEP-RBVProgram)



Above: Volunteers work to identify macroinvertebrates during a monitoring effort on East Meadow Brook in Woodbury, Connecticut. Photo courtesy of the Pomperaug River Watershed Coalition.

2021 Local RBV Programs & Leaders

Local RBV Programs ensure that the statewide RBV program is a success each year. Local RBV Coordinators put countless hours into organizing their programs, communicating with DEEP, recruiting and training volunteers, and more.

Local RBV Program	Coordinator(s)
Candlewood Valley Chapter of Trout Unlimited	Joe Hovious & Paul Shafer
Eightmile River Wild & Scenic Watershed	Patricia Young & Riley Doherty
Farmington River Watershed Association	Heather Geist*
Niantic River Watershed Committee	Don Danila
Pomperaug River Watershed Coalition	Carol Haskins
Ridgefield Conservation Commission	Roberta Barbieri*
Salmon River Watershed Partnership	Patricia Young
The Last Green Valley	Jean Pillo
Three Rivers Community College	Diba Khan-Bureau
Town of Bolton Conservation Commission	Rod Parlee & Peter Van Dine
Town of East Lyme Commission for the Conservation of Natural Resources	Penny Howell & Don Danila
Town of Greenwich Conservation Commission	Sarah Coccaro
Town of Vernon Conservation Commission	Tom Ouellette
Washington Montessori School	Tom Fahsbender & Tim Koppe*
Western CT State University	Chris Bellucci*

**New Coordinators – welcome!*

Additional program partners include **The McLean Game Refuge, Woodstock Academy, Lewis Mills High School Environmental Science Class, Farmington Valley Chapter of Trout Unlimited, and East Haddam Girl Scout Troup 62025.**

Finally, the RBV Program would not be possible without the volunteers that head out into the streams each year to collect RBV samples – thank you to each of you!

Thank You Alisa and Judy!



During 2021, we said a fond farewell to two long-time local RBV Coordinators - **Alisa Phillips-Griggs** of the Farmington River Watershed Association, and **Judy Rondeau** of the Niantic River Watershed Commission and Eastern CT Conservation District. Alisa is headed off to a retirement undoubtedly full of adventure, while Judy headed north to share her wealth of water knowledge with our partners in Massachusetts. Thank you both for your years of dedication to the RBV Program!

2021 Monitoring Results

The 2021 RBV monitoring program faced numerous challenges including the ongoing COVID-19 pandemic and considerable high flows during most of the sampling season. **Despite the pandemic and less than ideal sampling conditions, the program continued to have a positive impact and contributed meaningful data to the Department of Energy and Environmental Protection.**

RBV volunteers collected 80 vouchers from 73 unique locations on 65 different waterbodies. **52 (65%) of the 2021 monitoring vouchers had 4 or more taxa types in the 'Most Wanted' category, indicating that these stream segments are among Connecticut's healthiest streams.**

In addition, the RBV Program is excited to welcome several new partners: **The McClean Game Refuge, Ridgefield Conservation Commission and Western Connecticut State University.**

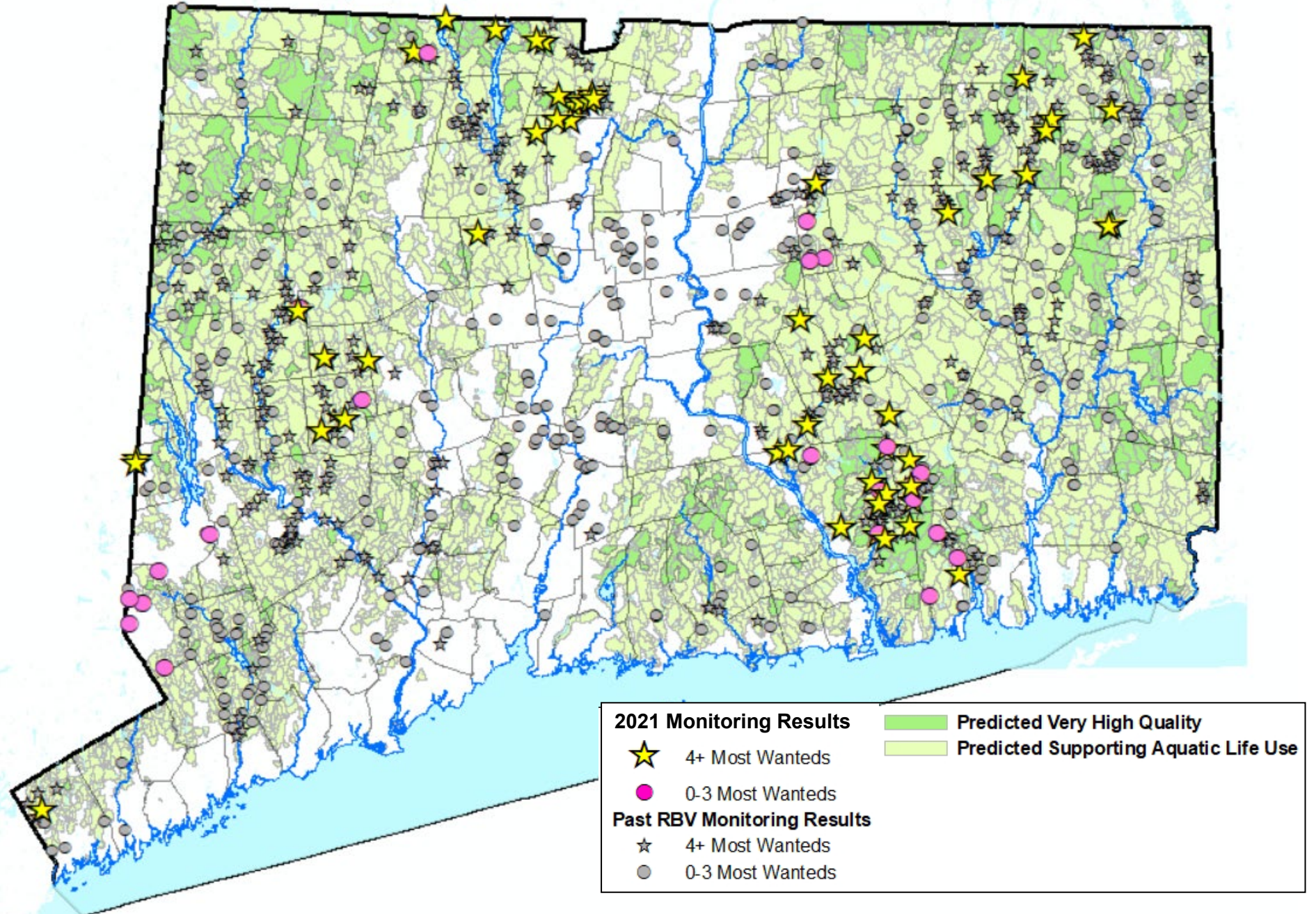
	2015	2016	2017	2018	2019	2020	2021
RBV Samples Submitted	68	70	78	55	118	47	80
# Monitoring Stations	68	61	74	45	102	41	73
# Streams Monitored	54	55	61	43	89	36	65
# Samples w/ 4+ "Most Wanted" Types	21 (31%)	21 (30%)	43 (55%)	23 (42%)	62 (53%)	16 (34%)	52 (65%)

Thank you to everyone who participated in the 2021 effort!



Above photos courtesy of the Bolton Conservation Commission.

2021 Results Map. This map depicts the number of 'Most Wanted' macroinvertebrate types present in RBV voucher samples. Sites are 'healthy' if 4 or more 'Most Wanted' macroinvertebrate taxa were present.



2021 Results Table. The results table provides a list of RBV samples submitted to DEEP 2021. Samples are sorted by waterbody name, site ID and then monitoring date. ‘Most Wanted’ taxa confirmed present in the voucher are noted with an “X”. (Column numbers corresponds to the RBV macroinvertebrate organism ID number on the RBV ID cards and datasheet). Bold font indicates a site at which four or more ‘Most Wanted’ RBV taxa types were present in the voucher. There are 17 possible most wanted taxa; each miscellaneous small stonefly taxa present (up to 6 types) count as one ‘Most Wanted’ taxa type. The site with the greatest number of ‘Most Wanted’ taxa types is highlighted in green.

A detailed list of all monitoring sites, most wanted counts and the complete RBV taxa list for each can be downloaded from the [Water Quality Portal: https://www.waterqualitydata.us](https://www.waterqualitydata.us).

Waterbody	Site ID	Date	Group	"Most Wanted" Taxa								TOTAL Most Sensitive Taxa Count	Other Taxa																																					
				1	2	3	4	5A	5B	5C	6A		6B	7	8A	8B	9	10	11	12	13	14A	14B	15	16	17	18	19	20	21	22	23	24	25	26	27	28													
Baker Brook (Bolton)	18821	31-Oct	BCC					X											X						X																									
Barrows Brook (Vernon)	15594	6-Nov	VCC				X	X		X	X																	X		X																				
Beach Brook (Granby)	16489	17-Jun	FRWA/MGR			X	X	X		X				X											X	X		X	X	X	X																			
Beaver Brook (Lyme)	15312	5-Nov	TRCC		X			X		X				X											X			X																						
Bebbington Brook (Ashford)	15988	20-Oct	TLGV			X	X	X		X												X				X																								
Belden Brook (Hartland)	20664	20-Oct	FRWA				X	X	X	X	X			X					X						X																									
Belden Brook Tributary (Hartland)	16388	20-Oct	FRWA				X	X		X	X								X	X				X		X																								
Big Brook (Salem)	17992	4-Nov	8MILE		X			X		X				X					X	X	X			X																										
Bigelow Brook (East Hampton)	20373	11-Sep	SRWP				X	X		X									X						X	X		X		X	X	X																		
Bissell Brook (Granby)	20660	20-Jul	FRWA/MGR					X	X	X	X			X										X		X	X		X																					
Bissell Brook (Granby)	20663	21-Jul	FRWA/MGR			X		X	X	X	X			X											X	X		X		X	X	X																		
Bissell Brook (Simsbury)	20659	10-Aug	FRWA/MGR		X	X		X		X				X					X	X					X	X		X																						
Blackwell Brook (Brooklyn)	20642	10-Sep	TLGV		X			X			X								X	X	X					X																								
Blackwell Brook (Brooklyn)	20642	20-Nov	TLGV		X	X		X		X	X								X	X	X					X	X		X	X	X																			

Waterbody	Site ID	Date	Group	1	2	3	4	5A	5B	5C	6A	6B	7	8A	8B	TOTAL Most Sensitive Taxa Count	9	10	11	12	13	14A	14B	15	16	17	18	19	20	21	22	23	24	25	26	27	28				
				"Body Builder" Mayfly	"Brush Legged" Mayfly	Two-Tailed Flatheaded Mayfly	Roach-Like Stonefly	Common Stonefly	Giant Stonefly	Misc. Small Stoneflies	Saddle Casemaker Caddisfly	Cornucopia Casemaker Caddisfly	Free-Living Caddisfly	Humpless Casemaker Caddisfly	Bizarre Caddisfly ("Plant Casemaker")		Common Net Spinner Caddisfly	Fingernet Caddisfly	Flathead Mayfly	Water Penny	Dobsonfly/Fishfly	Dragonfly	Damselfly	Amphipod ("Scud")	Aquatic Sowbug	Leech	Non-Biting Midge	Black Fly	Freshwater Snail	Aquatic Worm	Crayfish	Crane Fly	Riffle Beetle	Small Minnow Mayfly		Aquatic Snipe Fly	Flatworm	Mussel/Clam			
<i>Bosworth Brook (Woodstock)</i>	20643	6-Oct	TLGV				X	X		X	X			X		6	X	X	X	X	X	X				X			X		X	X	X								
<i>Bundy's Brook (Mansfield)</i>	20644	19-Nov	TLGV			X	X	X		X	X		X		X	12	X	X		X	X					X	X		X		X		X								
<i>Bunnell Brook Tributary (Burlington)</i>	20666	7-Sep	FRWA/LMHS				X	X		X			X			4	X	X			X	X					X		X												
<i>Burnham Brook (East Haddam)</i>	20492	1-May	TRCC			X				X			X			5	X	X								X	X		X		X										
Cabin Brook (Colchester)	20673	9-Oct	SRWP				X	X			X					3	X		X	X	X	X									X										
<i>Cedar Pond Brook (Lyme)</i>	20493	1-May	TRCC/8MILE							X			X			4	X	X	X		X	X	X				X	X		X							X				
Center Brook (Colebrook)	20667	18-Sep	FRWA					X					X		X	3	X	X		X	X									X				X							
<i>Cherry Brook Tributary (Canton)</i>	20665	11-Nov	FRWA			X		X		X	X		X	X		8	X	X	X	X	X						X	X		X		X		X							
<i>Converse Pond Brook (Greenwich)</i>	20645	17-Nov	GCC					X		X	X					4	X	X	X	X				X	X		X		X												
Cranberry Meadow Brook (East Lyme)	20375	22-Oct	NRWC/ELCCNR					X						X		2	X	X	X	X	X	X	X				X		X			X			X		X				
E. Branch Silvermine River (Ridgefield)	20646	16-Oct	RCC								X					1	X	X	X		X	X					X		X		X										
<i>East Meadow Brook (Woodbury)</i>	18993	18-Sep	PRWC		X			X	X		X					4	X	X	X	X	X	X					X	X		X		X	X	X		X					
Eightmile River (East Haddam)	15179	12-Sep	8MILE/EHGS				X	X						X		3	X	X	X	X	X	X							X			X	X		X						
<i>Elbow Brook (East Hampton)</i>	20509	14-Nov	SRWP			X	X	X		X	X	X	X	X	X	13	X	X	X	X	X						X		X		X	X	X								

Waterbody	Site ID	Date	Group	1	2	3	4	5A	5B	5C	6A	6B	7	8A	8B	TOTAL Most Sensitive Taxa Count	9	10	11	12	13	14A	14B	15	16	17	18	19	20	21	22	23	24	25	26	27	28				
				"Body Builder" Mayfly	"Brush Legged" Mayfly	Two-Tailed Flatheaded Mayfly	Roach-Like Stonefly	Common Stonefly	Giant Stonefly	Misc. Small Stoneflies	Saddle Casemaker Caddisfly	Cornucopia Casemaker Caddisfly	Free-Living Caddisfly	Humplless Casemaker Caddisfly	Bizarre Caddisfly ("Plant Casemaker")		Common Net Spinner Caddisfly	Fingernet Caddisfly	Flathead Mayfly	Water Penny	Dobsonfly/Fishfly	Dragonfly	Damselfly	Amphipod ("Scud")	Aquatic Sowbug	Leech	Non-Biting Midge	Black Fly	Freshwater Snail	Aquatic Worm	Crayfish	Crane Fly	Riffle Beetle	Small Minnow Mayfly	Aquatic Snipe Fly	Flatworm	Mussel/Clam				
Falls Brook (Hartland)	19683	29-Sep	FRWA				X	X		X						4	X	X	X					X			X														
Fawn Brook (Marlborough)	18409	6-Nov	SRWP		X			X		X	X				X	7	X	X	X	X	X	X					X		X					X		X					
Flat Brook (East Hampton)	16121	11-Sep	SRWP					X		X	X			X		4	X	X	X	X	X	X										X	X	X							
Fourmile River (East Lyme)	17322	22-Oct	NRWC/ELCCNR					X						X		2	X	X	X		X	X		X					X									X			
French Brook (Bolton)	15592	31-Oct	BCC													0	X					X					X		X		X										
Good Hill Brook (Woodbury)	16696	14-Sep	PRWC				X	X	X			X	X	X	X	7	X	X		X	X						X		X		X	X	X								
Harris Brook (Salem)	15313	8-May	TRCC		X			X						X		3	X	X	X		X						X		X												
Harris Brook (Salem)	15313	5-Nov	TRCC		X			X		X						3	X		X		X																				
Harris Brook (Salem)	15313	18-Nov	TRCC		X			X		X				X		4	X	X	X	X	X	X		X																	
Harris Brook (Salem)	19214	16-Oct	TRCC		X			X								2	X	X	X		X	X																			
Hedge Brook (East Haddam)	20126	1-May	TRCC			X				X						4		X			X						X	X		X				X							
Hedge Brook (East Haddam)	20126	5-Nov	TRCC		X		X	X				X		X	X	6	X	X	X	X	X	X	X					X		X		X									
Indian Hut Brook (Eastford)	17816	23-Oct	TLGV			X	X	X		X	X		X		X	10	X	X	X								X	X		X		X									
Lake Hayward Tributary (East Haddam)	20389	8-May	TRCC/8MILE			X		X		X			X			6	X	X	X		X	X					X	X		X		X									
Lake Hayward Tributary (East Haddam)	20389	16-Oct	TRCC					X								1		X				X									X										
Latimer Brook (East Lyme)	18413	20-Oct	NRWC/ELCCNR					X		X				X		3	X	X	X	X	X	X	X	X			X				X					X					
Latimer Brook (East Lyme)	18495	20-Oct	NRWC/ELCCNR					X		X				X		3	X	X	X	X		X		X		X	X		X		X		X		X						

Waterbody	Site ID	Date	Group	1	2	3	4	5A	5B	5C	6A	6B	7	8A	8B	TOTAL Most Sensitive Taxa Count	9	10	11	12	13	14A	14B	15	16	17	18	19	20	21	22	23	24	25	26	27	28								
				"Body Builder" Mayfly	"Brush Legged" Mayfly	Two-Tailed Flatheaded Mayfly	Roach-Like Stonefly	Common Stonefly	Giant Stonefly	Misc. Small Stoneflies	Saddle Casemaker Caddisfly	Cornucopia Casemaker Caddisfly	Free-Living Caddisfly	Humpless Casemaker Caddisfly	Bizarre Caddisfly ("Plant Casemaker")		Common Net Spinner Caddisfly	Fingernet Caddisfly	Flathead Mayfly	Water Penny	Dobsonfly/Fishfly	Dragonfly	Damselfly	Amphipod ("Scud")	Aquatic Sowbug	Leech	Non-Biting Midge	Black Fly	Freshwater Snail	Aquatic Worm	Crayfish	Crane Fly	Rifle Beetle	Small Minnow Mayfly		Aquatic Snipe Fly	Flatworm	Mussel/Clam							
<i>Little Brook (Woodstock)</i>	20647	8-Oct	TLGV/WA				X	X			X	X				4	X	X	X		X	X			X	X	X	X	X			X	X												
<i>Lost Pond Brook (Union)</i>	20519	21-Oct	TLGV				X	X		X	X					7	X		X		X	X					X				X		X												
Miry Brook (Danbury)	20648	2-Oct	RCC		X			X								2	X	X	X	X		X					X		X		X	X	X				X								
Moodus River (East Haddam)	18871	25-Sep	SRWP					X								1	X	X		X	X	X					X		X	X			X												
Mopus Brook (Ridgefield)	20649	16-Oct	RCC		X					X						2	X		X	X			X				X					X	X				X								
<i>Muddy Brook (Woodstock)</i>	14305	4-Nov	TLGV				X	X		X				X		6	X	X	X	X	X	X	X	X			X	X		X		X		X											
<i>Muddy Brook Tributary (East Haddam)</i>	20671	4-Nov	8MILE				X	X		X		X	X	X	X	10	X	X	X	X	X	X					X		X	X		X													
<i>Nonewaug River (Watertown)</i>	16334	19-Sep	PRWC		X		X	X					X			4	X	X	X	X	X	X					X		X	X		X	X		X	X									
<i>Pine Brook (Haddam)</i>	20508	2-Oct	SRWP				X	X		X	X			X	X	6	X			X	X	X					X	X			X		X												
<i>Pleasant Valley Brook (Lyme)</i>	15314	1-May	TRCC			X	X	X		X						8	X				X	X					X	X		X		X													
Pleasant Valley Brook (Lyme)	15314	16-Oct	TRCC					X								1	X	X			X	X					X			X		X													
<i>Quaker Brook (New Fairfield)</i>	20650	30-Oct	WCSU		X			X	X		X					4	X	X	X	X		X								X			X				X								
<i>Quaker Brook (New Fairfield)</i>	20651	30-Oct	WCSU		X			X	X	X	X					7	X	X	X	X					X					X	X			X											
Railroad Brook (Bolton)	17971	31-Oct	BCC					X					X			2	X			X		X					X						X												
<i>Ransom Brook (Salem)</i>	19215	8-May	TRCC				X	X		X			X			5	X	X	X	X	X	X					X			X	X	X		X											
Ransom Brook (Salem)	19215	16-Oct	TRCC					X						X		2			X	X	X	X					X			X		X													
<i>Raymond Brook (Hebron)</i>	17978	23-Oct	SRWP		X			X		X						4	X	X	X		X	X					X							X											

Waterbody	Site ID	Date	Group	1	2	3	4	5A	5B	5C	6A	6B	7	8A	8B	TOTAL Most Sensitive Taxa Count	9	10	11	12	13	14A	14B	15	16	17	18	19	20	21	22	23	24	25	26	27	28						
				"Body Builder" Mayfly	"Brush Legged" Mayfly	Two-Tailed Flatheaded Mayfly	Roach-Like Stonefly	Common Stonefly	Giant Stonefly	Misc. Small Stoneflies	Saddle Casemaker Caddisfly	Cornucopia Casemaker Caddisfly	Free-Living Caddisfly	Humpless Casemaker Caddisfly	Bizarre Caddisfly ("Plant Casemaker")		Common Net Spinner Caddisfly	Fingernet Caddisfly	Flathead Mayfly	Water Penny	Dobsonfly/Fishfly	Dragonfly	Damselfly	Amphipod ("Scud")	Aquatic Sowbug	Leech	Non-Biting Midge	Black Fly	Freshwater Snail	Aquatic Worm	Crayfish	Crane Fly	Rifle Beetle	Small Minnow Mayfly		Aquatic Snipe Fly	Flatworm	Mussel/Clam					
Raymond Brook Tributary (Hebron)	20672	10-Nov	SRWP							X		X				4	X	X			X	X	X	X	X		X	X		X		X	X										
Reichenbach Brook (Woodbury)	20154	18-Sep	PRWC					X								1	X	X	X	X	X						X		X		X		X										
Roaring Brook (Lyme)	19458	8-May	TRCC		X	X	X	X		X	X		X		X	10	X	X			X	X	X				X		X		X	X											
Roaring Brook (Lyme)	19458	5-Nov	TRCC		X		X	X					X	X		5	X	X	X		X	X					X				X												
Round Pond Outlet (Ridgefield)	20652	16-Oct	RCC													0	X		X		X						X						X										
Sandy Brook (Colebrook)	20668	18-Sep	FRWA		X			X			X					3	X	X			X						X		X					X									
Shears Brook (Washington)	18402	22-Oct	WMS		X		X	X					X			4	X	X	X	X	X	X																					
Shears Brook (Washington)	20674	22-Oct	WMS		X			X								2	X	X	X	X		X																					
Slocum Brook (Colebrook)	20670	11-Nov	FRWA/FVTU		X	X		X		X						4	X		X	X	X	X					X																
Slovic Brook (Eastford)	20653	13-Oct	TLGV				X	X		X	X					4	X	X	X	X	X						X		X	X	X	X	X	X									
Steven A. Paine Brook (Granby)	20669	16-Jun	FRWA/MGR				X	X		X			X			6	X	X	X		X	X									X	X											
Still River (Danbury)	20654	6-Nov	WCSU													0	X							X			X		X			X								X			
Tanner Brook (Brooklyn)	20655	13-Nov	TLGV				X	X		X	X		X			5	X	X	X		X			X			X	X	X	X	X	X	X	X									
Titicus River (Ridgefield)	14741	15-Oct	RCC		X			X		X						3	X	X	X	X	X						X	X				X	X										
W. Branch Salmon Brook (Granby)	16238	23-Jul	FRWA/MGR		X	X		X	X	X	X		X			8	X	X	X	X	X						X		X		X	X	X	X		X							
W. Branch Salmon Brook (Granby)	20656	26-Jul	FRWA/MGR		X	X		X	X	X						6	X	X	X	X	X	X					X	X	X					X									

Waterbody	Site ID	Date	Group	1	2	3	4	5A	5B	5C	6A	6B	7	8A	8B	TOTAL Most Sensitive Taxa Count	9	10	11	12	13	14A	14B	15	16	17	18	19	20	21	22	23	24	25	26	27	28	
<i>W. Branch Salmon Brook (Granby)</i>	20658	11-Sep	FRWA/MGR		X	X		X	X	X	X		X			7	X	X	X	X	X	X					X	X		X		X	X	X		X	X	
<i>Wood Creek (Bethlehem)</i>	20378	19-Sep	PRWC		X		X	X	X	X			X			6	X	X		X	X						X			X	X		X					



Above photos courtesy of The Last Green Valley Association.

Interpreting Your Results

Refer to Table 3 for guidance on how to interpret your monitoring results.

Table 3. Interpretation of RBV Results by Most Wanted Taxa Type Count.

# 'Most Wanted' Taxa	What Does it Tell Us?
4+	<p><i>Excellent!! Lots of very sensitive macroinvertebrate types were present – <u>you found a healthy stream segment!</u></i></p> <p>This is a very clear signal of excellent water quality as the 'Most Wanted' types cannot survive in degraded streams or otherwise low water quality conditions.</p> <p>DEEP Assessment Decision: The stream containing the monitoring location will be considered for 'Fully Supporting' State aquatic life use standards. Fully supporting streams or stream segments will be listed in the next Integrated Water Quality Report (IWQR) and added to the DEEP's running list of miles of Healthy Waters assessed.</p> <p>Recommended Volunteer Follow-Up Action: Revisit every 2 to 5 years to continue documenting the excellent health of this stream.</p>
3	<p><i>A Very <u>Good Sign</u> – Keep this Site on Your Radar!</i></p> <p>Three Most Wanted or very sensitive macroinvertebrate types in a sample is a strong signal of good to excellent water quality. Although three most wanted is not statistically enough data for DEEP to list the site as a healthy stream segment this time, this is a great find!</p> <p>DEEP Assessment Decision: No Assessment Made... but consider trying again!</p> <p>Recommended Volunteer Follow-Up Action: If this was the first time the site was monitored with RBV, this site should be a high priority candidate for next season.</p>
0-2	<p><i>Double check whether this is a good spot to be using the RBV method...</i></p> <p>More information is needed to determine the water quality at this site. Reasons for few most wanted could include poor water quality; <i>however</i>, few most wanted types should not be interpreted as a proof of degraded conditions. Other factors such as unusual flow conditions and lack of adequate habitat can also result in few most wanted types despite overall good water quality.</p> <p>DEEP Assessment Decision: No Assessment Made</p> <p>Recommended Volunteer Follow-Up Action: Discuss with the State RBV Coordinator whether you should revisit this site in future monitoring seasons.</p>

2021 RBV Data Impact

The 2021 RBV results will be integrated into the 2024 Integrated Water Quality Report. A 'healthy' river or stream is one that fully supports a variety of uses, including aquatic life use.

2021 RBV volunteers monitored 65 waterbodies in Connecticut. Based on the results reported in the previous section, RBV data is likely to generate **22 new listings of Connecticut waterbodies that fully supporting aquatic life use:**

1. Beach Brook (Granby)
2. Belden Brook (Hartland)
3. Bissell Brook (Granby/Simsbury)
4. Bissel Brook Tributary – aka “Steven A. Paine Brook” (Granby)
5. Bosworth Brook (Woodstock)
6. Bundy’s Brook (Mansfield)
7. Bunnell Brook Tributary (Burlington)
8. Cedar Pond Brook (Lyme)
9. Cherry Brook Tributary (Canton)
10. East Branch Eightmile River Tributary – aka “Ransom Brook” (Salem)
11. East Meadow Brook (Woodbury)
12. Falls Brook (Hartland)
13. Hedge Brook (East Haddam)
14. Indian Hut Brook (Eastford)
15. Lake Hayward Tributary (East Haddam)
16. Little Brook (Woodstock)
17. Lost Pond Brook (Union)
18. Muddy Brook Tributary (East Haddam)
19. Shears Brook (Washington)
20. Slocum Brook (Colebrook)
21. Slovic Brook (Eastford)
22. Tanner Brook (Brooklyn)

In addition, the 2021 RBV data will allow DEEP to propose **maintaining 22 existing ‘fully supporting ALUS’ listings on the following waterbodies:**

1. Barrows Brook (Vernon)
2. Beaver Brook (Lyme)
3. Bebbington Brook (Ashford)
4. Belden Brook (Hartland)
5. Big Brook (Salem)
6. Blackwell Brook (Brooklyn)
7. Burnham Brook (East Haddam)
8. East Branch Converse Pond Brook (Greenwich)
9. Eightmile River Tributary – aka “PV Brook” (Lyme)
10. Elbow Brook (East Hampton)
11. Fawn Brook (Marlborough)
12. Flat Brook (East Hampton)
13. Goodhill Brook (Woodbury)
14. Harris Brook (Salem)
15. Muddy Brook (Woodstock)
16. Nonewaug River (Watertown)
17. Pine Brook (Haddam)
18. Quaker Brook (New Fairfield)
19. Raymond Brook (Hebron)
20. Roaring Brook #2 (Lyme)
21. West Branch Salmon Brook (Granby)
22. Wood Creek (Bethlehem)

These results indicate that 2 out of every 3 waterbodies monitored by RBV volunteers will be assessed as fully supporting aquatic life use in the next Integrated Water Quality Report!

Appendix A: 2021 RBV Monitoring Station Description & Details

Locations are sorted by DEEP Station ID number (Site # column). Note that the actual RBV monitoring location may be slightly upstream or downstream of the official DEEP station.

Site #	Waterbody	Location Description	Town	Latitude	Longitude
14305	Muddy Brook	Between the confluence with an unnamed tributary and dirt road crossing	Woodstock	42.01470	-72.00170
14741	Titicus River	Upstream Sherwood Road	Ridgefield	41.32870	-73.52180
15179	Eightmile River	At the Deep Hole Picnic Area	East Haddam	41.46710	-72.33720
15312	Beaver Brook	Downstream of the bridge at 55-123 Beaver Brook Road	Lyme	41.40995	-72.32906
15313	Harris Brook	At the mouth	Salem	41.47330	-72.28510
15314	Eightmile River, tributary to	At the trail crossing off MacIntosh Road (within the Pleasant Valley Preserve)	Lyme	41.41550	-72.33960
15592	French Brook	At French Road	Bolton	41.74420	-72.44850
15594	Barrows Brook	Upstream of the confluence with the Tankerhoosen River	Vernon	41.84020	-72.43650
15988	Bebbington Brook	Adjacent to Bicknell Road at Hastings Memorial Forest sign	Ashford	41.84470	-72.15930
16238	West Branch Salmon Brook	Within the McLean Game Refuge, upstream of the footbridge	Granby	41.93930	-72.81690
16334	Nonewaug River	1000m downstream of Skilton Road, within Watertown land trust property	Watertown	41.62550	-73.15930
16388	Belden Brook	Downstream of Fuller Road	Hartland	42.01440	-72.88880
16489	Beach Brook	At Broad Hill Road	Granby	41.94610	-72.85280
16696	Goodhill Brook (Good Hill Brook)	Upstream of Grassy Hill Road	Woodbury	41.54080	-73.23420
17322	Fourmile River	At Spring Rock Road	East Lyme	41.33900	-72.25920
17816	Indian Hut Brook	Upstream of School Hill/East Hill Road (at Old Colony Road crossing)	Eastford	41.90276	-72.06398
17971	Railroad Brook	At the RR trail crossing in Freja Park, downstream of Bolton Notch Pond	Bolton	41.79220	-72.45299
17978	Raymond Brook	Within Grayville Park	Hebron	41.61420	-72.36780
17992	Big Brook	Upstream of Route 85	Salem	41.50446	-72.28783
18402	Shears Brook	50m upstream of West Morris Rd (near Shearer Rd)	Washington	41.68608	-73.27210
18409	Fawn Brook	Downstream of Old Hartford Road/S. Main Street (at mouth)	Marlborough	41.60458	-72.41875
18413	Latimer Brook	50m upstream of Colony Road	East Lyme	41.38397	-72.21429
18495	Latimer Brook	Upstream of Route 1, behind Flanders Plaza	East Lyme	41.36726	-72.20808
18821	Baker Brook, tributary to	Downstream School Road	Bolton	41.74794	-72.42410
18871	Moodus River	25m upstream of Gristmill Road	East Haddam	41.50859	-72.44826
18993	East Meadow Brook	At Scratchville Road	Woodbury	41.55509	-73.19706

Site #	Waterbody	Location Description	Town	Latitude	Longitude
19214	Harris Brook	0.25 mi upstream of Music Vale Road	Salem	41.48739	-72.27044
19215	E.B. Eightmile River, tributary to	30m downstream of Darling Rd ("Ransom Brook")	Salem	41.45494	-72.28356
19458	Roaring Brook #2	Upstream Route 82, behind Hadlyme Post Office	Lyme	41.42348	-72.39911
19683	Falls Brook	At Route 20 culvert	Hartland	42.02677	-72.95610
16121	Flat Brook	At Route 16 (at mouth)	East Hampton	41.55440	-72.45230
20126	Hedge Brook	At West Dolbia Hill Road	East Haddam	41.45207	-72.33766
20154	Reichenbach Brook	At Mill Road	Woodbury	41.57585	-73.17105
20373	Salmon River, tributary to	100 ft. upstream of Salmon River confluence	East Hampton	41.54838	-72.45101
20375	Cranberry Meadow Brook	Within Nehantic State Forest, off Grassy Hill Road	East Lyme	41.41490	-72.24536
20378	Wood Creek	Upstream from bridge (Arch Bridge Rd.)	Bethlehem	41.62964	-73.22928
20389	Lake Hayward, tributary to	East Shore Dr. right-of-way	East Haddam	41.52014	-72.32424
20492	Burnham Brook	Adjacent trail within Burnam Brook Preserve	East Haddam	41.46530	-72.32450
20493	Cedar Pond Brook	Upstream Gungy Road crossing	Lyme	41.42500	-72.28740
20508	Pine Brook	300 ft downstream Pine Brook Rd., within Haddam Land Trust Preserve	Haddam	41.51477	-72.49893
20509	Elbow Brook	50 ft upstream confluence with Salmon River	East Hampton	41.51889	-72.48250
20519	Lost Pond Brook	Downstream Rindge Rd (lower crossing)	Union	41.96611	-72.10140
20642	Blackwell Brook	Behind 139 Wolf Den Road, located on ECCD land	Brooklyn	41.78678	-71.96446
20643	Bosworth Brook	100 feet upstream Perrin Road	Woodstock	41.91583	-72.05380
20644	Bundy's Brook	75 feet downstream of Stonemill Road	Mansfield	41.80450	-72.22316
20645	Converse Pond Brook	400 ft downstream of Porchuck Road	Greenwich	41.07901	-73.67694
20646	East Branch Silvermine River	At Gay Road	Ridgefield	41.24984	-73.48392
20647	Little Brook	75 feet upstream of Route 169, Woodstock Academy south campus	Woodstock	41.92604	-71.95685
20648	Miry Brook	Adjacent Miry Brook Road, at Wooster School ballfield pedestrian bridge	Danbury	41.36727	-73.49648
20649	Mopus Brook	Upstream Mopus Bridge Road	Ridgefield	41.33416	-73.54165
20650	Quaker Brook	Within the Great Hollow Nature Preserve & Ecological Research Center	New Fairfield	41.50509	-73.53055
20651	Quaker Brook	Within the Great Hollow Nature Preserve & Ecological Research Center	New Fairfield	41.50065	-73.53270
20652	Round Pond Outlet	At Oreneca Road	Ridgefield	41.30253	-73.54142
20653	Slovic Brook	100 feet downstream of Route 198	Eastford	41.84990	-72.09593
20654	Still River	Behind the Courtyard Marriott	Danbury	41.41194	-73.41484
20655	Tanner Brook	1000 feet downstream of Wolf Den Rd., at the old stone culvert on ECCD land	Brooklyn	41.78871	-71.95978
20656	West Branch Salmon Brook	550 m upstream of Barndoor Hills Road	Granby	41.93433	-72.82641

Site #	Waterbody	Location Description	Town	Latitude	Longitude
20658	West Branch Salmon Brook	Behind the Granby Dog Park, at Salmon Brook Park	Granby	41.94747	-72.79791
20659	Bissell Brook	Within McLean Game Reserve, 10 m upstream of the South Trail crossing	Simsbury	41.91685	-72.83440
20660	Bissell Brook	Within McLean Game Reserve, at Chestnut Road bridge crossing	Granby	41.94283	-72.79681
20663	Bissell Brook	Within McLean Game Reserve, 200m upstream of Trout Pond	Granby	41.93889	-72.80426
20664	Belden Brook	Within Tunxis State Forest, downstream Fuller Road/North Lost Acres Road	Hartland	42.01164	-72.87586
20665	Cherry Brook, tributary to	Within the Swan Preserve, adjacent Case Street	Canton	41.90311	-72.88869
20666	Bunnell Brook, tributary to	Behind Lewis Mill HS and Hal-Bur MS, upstream Upson Road	Burlington	41.78036	-72.98366
20667	Center Brook	Adjacent to Pisgah Rd., approximately 0.5 mi from Sandy Brook Rd.	Colebrook	41.99856	-73.08706
20668	Sandy Brook	Within Algonquin State Forest, adjacent Sandy Brook Road	Colebrook	41.99653	-73.06724
20669	Bissell Brook, tributary to	Within McLean Game Refuge, upstream of Firetown Road at Westledge	Granby	41.91762	-72.85479
20670	Slocum Brook	Adjacent Colebrook River Road, 100 m downstream of state border	Colebrook	42.03898	-73.03587
20671	Muddy Brook, tributary to	0.25 mile upstream of confluence with Muddy Brook	East Haddam	41.47832	-72.34859
20672	Raymond Brook, tributary to	75 ft upstream of Kinney Road	Hebron	41.65136	-72.35988
20673	Cabin Brook	75 ft downstream Route 85 (downstream of Fedus Rd.)	Colchester	41.56038	-72.31908
20674	Shears Brook	Downstream of pull-off on Smokey Hollow Rd. (W. Morris Rd.)	Washington	41.68650	-73.27257



Above photos courtesy of (first photo at left) the Roxbury Conservation Commission and (three photos at right) Three Rivers Community College.



CT Department of Energy & Environmental Protection

Riffle Bioassessment by Volunteers

Volunteer Water Quality Monitoring Program



2021 Annual Summary Report (Report #23)

<https://portal.ct.gov/DEEP-RBVProgram>