



CT DEEP
Riffle Bioassessment by Volunteers
Volunteer Water Monitoring Program



2020
Annual Program
Report
(Report #22)

To Learn more about RBV
visit: [https://portal.ct.gov/
DEEP-RBVProgram](https://portal.ct.gov/DEEP-RBVProgram)



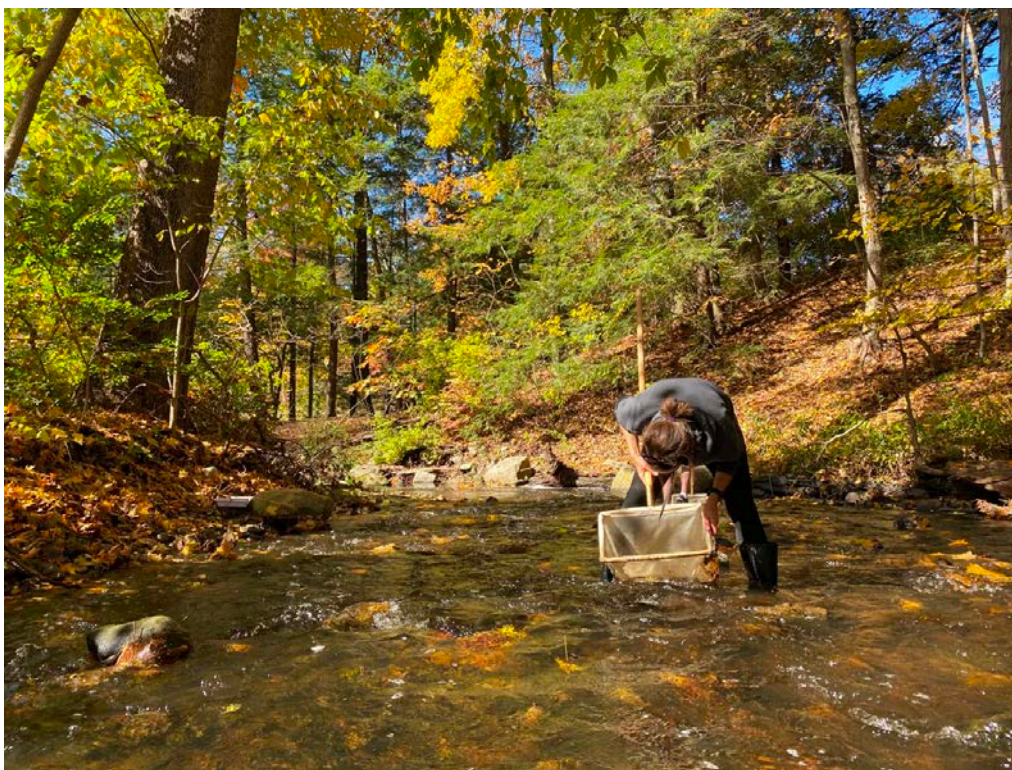
Table of Contents

An Introduction to RBV: The ‘Treasure Hunt’ for CT’s Healthiest Streams!	2
Local RBV Program Leaders	3
Monitoring Results.....	4
Interpreting Your RBV Results	9

Appendix A: Local RBV Program Contact Information

Appendix B: RBV Monitoring Station Descriptions and Details

Appendix C: Detailed RBV Monitoring Results



*A volunteer checks her net for macroinvertebrates while sampling Bullet Hill Brook.
Photo courtesy of the Pomperaug River Watershed Coalition.*

Front Cover Photos:

Top Left: RBV Volunteers sort a sample collected from Bullet Hill Brook. *(Photo courtesy of the Pomperaug River Watershed Coalition.)* **Bottom Left:** Student volunteers pose with their instructor, Dr. Diba Khan-Bureau. *(Photos courtesy of Three Rivers Community College.)* **Bottom Right:** A volunteer with The Last Green Valley works to collect an RBV sample from Meadow Brook. *(Photo courtesy of The Last Green Valley.)*

Back Cover Photo:

RBV Volunteers pose while wading at a monitoring location. *Photo courtesy of The Pomperaug River Watershed Coalition.*

An Introduction to RBV: The Treasure Hunt for CT's Healthiest Streams!

The CT DEEP Riffle Bioassessment by Volunteers or "RBV" Program is an annual fall 'treasure hunt' for Connecticut's healthiest streams. CT DEEP uses the data collected by RBV volunteers to expand its inventory of excellent small, high gradient Connecticut streams that have excellent water quality – our "Healthy Streams" list.

RBV volunteers examine the water quality of local stream segments by studying the aquatic benthic macroinvertebrate community present in rocky or 'riffle' areas of these streams. If volunteers can find four or more pollution sensitive or 'most wanted' macroinvertebrates, CT DEEP can use this data to assess that stream as fully supporting water quality standards for aquatic life use – documenting it as one of CT's healthiest streams! (Because it is a screening approach and not a more in-depth assessment methodology, RBV cannot provide a detailed water quality assessment, nor can it be used to identify low or impaired water quality.)

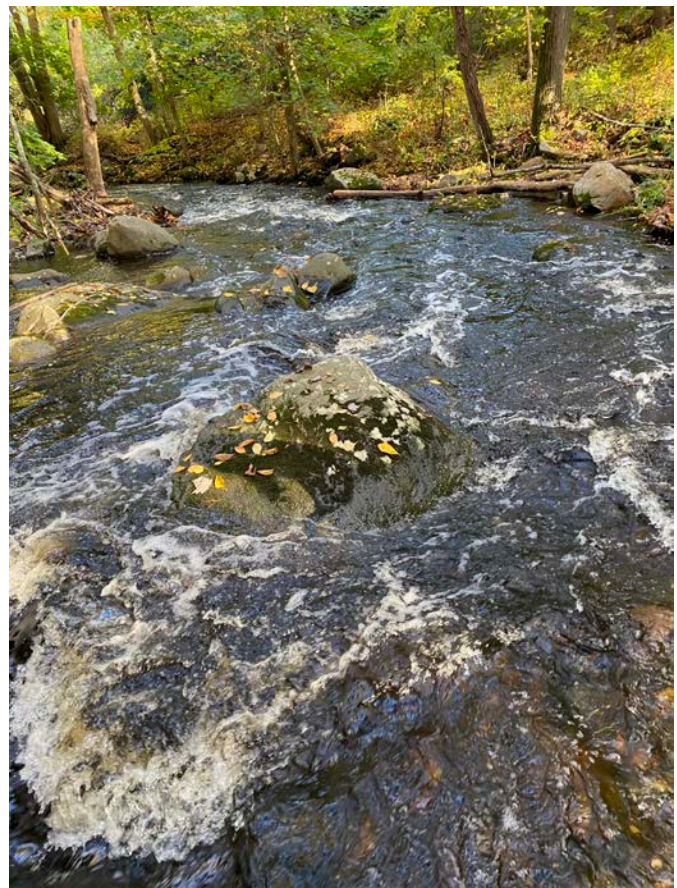
To learn more contact:

Meghan Lally
State RBV Program Coordinator
DEEP.RBVProgram@ct.gov
860-424-3061
[https://portal.ct.gov/
DEEP-RBVProgram](https://portal.ct.gov/DEEP-RBVProgram)



Above: A volunteer holds a rock up for inspection. (Photo courtesy of Three Rivers Community College.)

Right: Deep Brook in Newtown, Connecticut. A 2020 RBV monitoring location. (Photo courtesy of the Candlewood Valley Chapter of Trout Unlimited.)



2020 Local RBV Programs & Leaders

Local RBV Programs ensure that the statewide RBV program is a success each year. Local RBV Coordinators put countless hours into organizing their programs, communicating with DEEP, recruiting and training volunteers, and more. In addition, the RBV Program would not be possible without the volunteers that head out into the streams each year to collect RBV samples – thank you to each of you!

Local RBV Program	Coordinator(s)
Town of Greenwich Conservation Commission*	Sarah Coccaro
Eightmile River Wild & Scenic Watershed	Patricia Young & Riley Doherty
Washington Montessori School*	Tom Fahsbender
Pomperaug River Watershed Coalition	Carol Haskins
Town of East Lyme Commission for the Conservation of Natural Resources	Penny Howell
Candlewood Valley Chapter of Trout Unlimited	Joe Hovious & Paul Shafer
Three Rivers Community College	Diba Khan-Bureau
Town of Vernon Conservation Commission*	Tom Ouellette
Town of Bolton Conservation Commission	Rod Parlee & Peter Van Dine
Farmington River Watershed Association*	Alisa Phillips-Griggs
The Last Green Valley	Jean Pillo
Niantic River Watershed Committee	Judy Rondeau
Salmon River Watershed Partnership	Patricia Young

**Unable to monitor in 2020 due to the COVID pandemic*

Thank you volunteers!



A few of the many dedicated volunteers that participate in the RBV Program! Photos courtesy of (left to right) Three Rivers Community College, Pomperaug River Watershed Coalition, and The Last Green Valley.)

2020 Monitoring Results

The 2020 RBV monitoring season was severely challenged by the COVID-19 pandemic. All new volunteer trainings were cancelled for the year. Many well-established local RBV programs were able to call upon long-term volunteers to continue to effectively run their annual monitoring programs, though in most cases at a much smaller scale. Other programs chose to postpone monitoring until 2021 to ensure the safety of their volunteers. **Despite the pandemic, the program continued to have a positive impact and contributed meaningful data to the Department of Energy and Environmental Protection.**

RBV volunteers collected 47 vouchers from 41 unique locations on 36 different waterbodies. **Sixteen (34%) of the 2020 monitoring vouchers had 4 or more taxa types in the ‘Most Wanted’ category, indicating that these stream segments are among Connecticut’s healthiest streams.**

	2015	2016	2017	2018	2019	2020
RBV Samples Submitted	68	70	78	55	118	47
# Monitoring Stations (Appendix B)	68	61	74	45	102	41
# Streams Monitored	54	55	61	43	89	36
# Samples w/ 4+ "Most Wanted" Types	21 (31%)	21 (30%)	43 (55%)	23 (42%)	62 (53%)	16 (34%)

These results will be integrated into the 2022 Integrated Water Quality Report and will result in the **proposed new listings of the following 4 waterbodies** as fully supporting aquatic life use:

- Carmel Hill Brook (Woodbury)
- Iron Mine Brook (Ashford)
- Bush Meadow Brook (Stafford/Union)
- Unnamed tributary to the East Branch Eightmile River (Salem)

In addition, these volunteer data will allow DEEP to **propose maintaining the ‘fully supporting ALUS’ listings of segments on the following 10 waterbodies:**

- Bungee Brook (Eastford)
- Burnham Brook (East Haddam)
- East Spring Brook (Bethlehem)
- Eightmile River (East Haddam)
- Harris Brook (Salem)
- Mount Hope River (Ashford)
- Muddy Brook (East Haddam)
- Roaring Brook #2 (Lyme)
- Sprain Brook (Woodbury)
- Still River (Eastford)

Thank you to everyone who participated in the 2020 effort!

2020 Results Map. This map depicts the number of 'Most Wanted' macroinvertebrate types present in RBV voucher samples. Sites are considered to be 'healthy' if 4 or more 'Most Wanted' macroinvertebrate taxa were present.

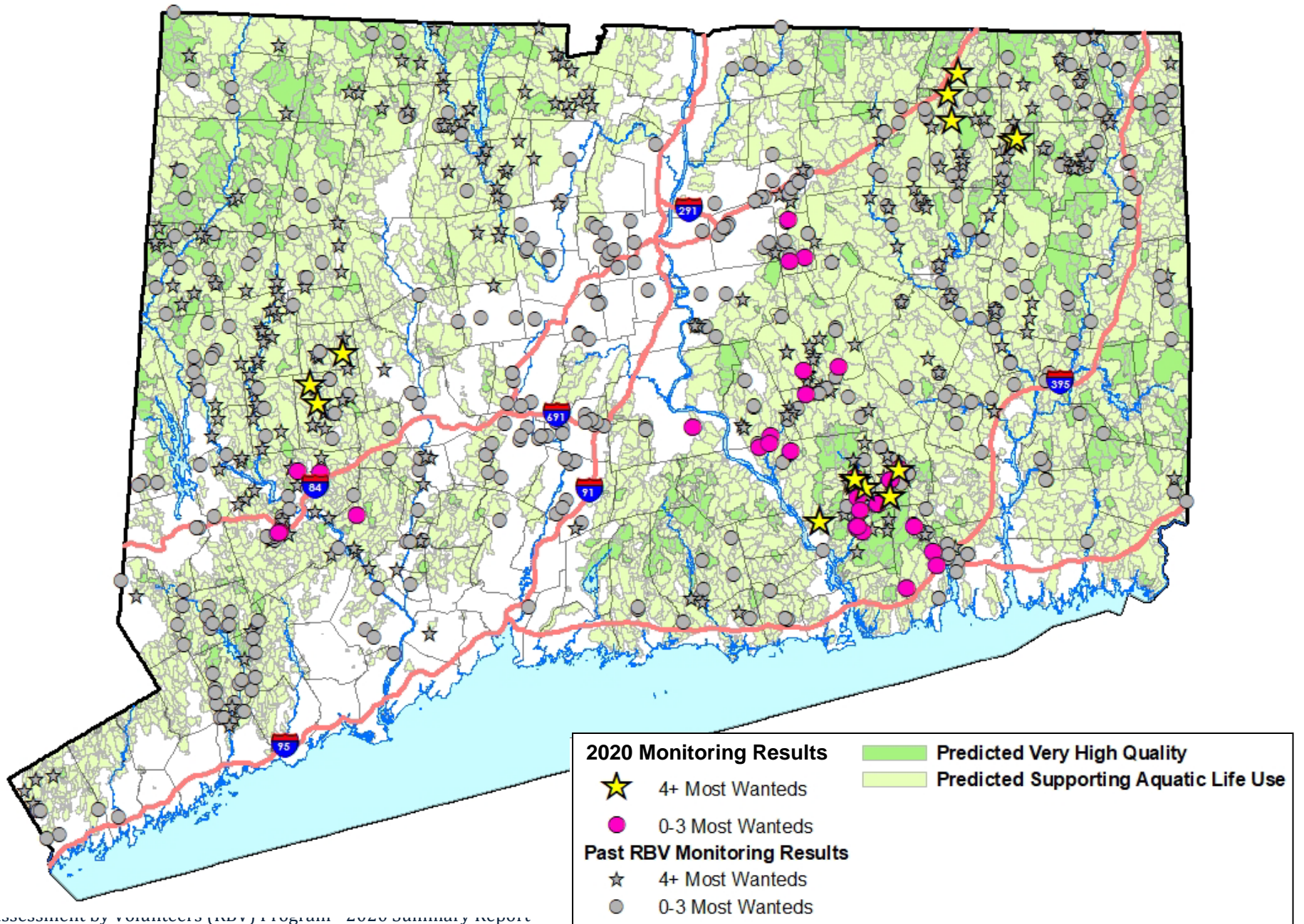


Table 2. Detailed RBV Station Results. Table 2 provides a list of RBV monitoring vouchers submitted to DEEP 2020. Samples are sorted by stream name and then station number. 'Most Wanted' taxa confirmed present in the voucher by a certified taxonomist are noted with an "X". (Column numbers corresponds to the RBV macroinvertebrate organism ID number). Bold italicized font indicates stations at which four or more 'Most Wanted' RBV taxa types were present in the voucher. Appendix B contains additional station details.

			Drunella sp.	Isonychiidae	Epeorus sp.	Peltoperlidae	Perlidae	Pteronarcyidae	Misc. St	Glossosomatidae	Apataniidae	Rhyacophiliidae	Lepidostomatidae	MOST SENSITIVE TOTAL	Hydropsychidae	Philopotamidae	Heptageniidae	Psephenidae	Corydalidae	Dragonfly	Damselflies	MODERATELY SENSITIVE TOTAL	Amphipoda	Isopoda	Chironomidae	Simuliidae	Lymnaeidae	Physidae	Planorbidae	Oligochaeta	LEAST SENSITIVE TOTAL	OTHER TAXA TOTAL	GRAND TOTAL	
Waterbody	Station	Date	1	2	3	4	5A	5B	5C	6A	6B	7	8B	9	10	11	12	13	14 A	14 B		15	16	18	19	20	20	20	21					
Baker Brook Tributary	18821	18-Oct												0								0			X						X	2	1	3
Beaver Brook	15312	24-Oct				X								1	X	X		X	2X			5										0	4	10
Blackledge River	14137	3-Oct		X		X		X						3	X	X	X	X	X	X		5										0	4	12
Bullet Hill Brook	16333	17-Oct							X	X		X		3	X	X	X	X	X	X		6	X		X		X		X		4	3	16	
Bungee Brook	20505	10-Nov		X		X	X		2X			X		6	X	X	X	X	X			5			X	X					2	6	19	
Burnham Brook	20492	4-May				X	X		2X			X		5	X		X		X	X		4									0	3	12	
Carmel Hill Brook	20486	24-Oct					X		2X	X			X	5		X	X	X	X			4							X		1	4	14	
Cranberry Meadow Brook	20375	24-Oct				X	X							2			X	X	X	X		4			X				X		2	3	11	
Deep Brook	15707	9-Nov		X			X		X					3	X	X	X	X	X			5							X		1	1	10	
Deep Brook	15764	17-Oct		X										1	X							1		X					X		2	2	6	
EAST BRANCH EIGHTMILE RIVER	16617	24-Oct		X			X							2		X	X	X	X			4									0	3	9	
E. Branch Eightmile River Tributary ("Ransom Brook")	19215	2-May				X	X					X	X	4			X	X	X	2X	X	6									0	3	13	
East Branch Eightmile River Tributary ("Ransom Brook")	19215	6-Nov				X	X		X			X	X	5	X	X	X	X	X	X	X	7									0	4	16	
East Spring Brook	20044	24-Oct				X	X	X	2X	X	X	X		8	X	X	X	X	X			5							X		1	8	22	

Waterbody	Station	Date	Taxa																					MOST SENSITIVE TOTAL	MODERATELY SENSITIVE TOTAL	LEAST SENSITIVE TOTAL	OTHER TAXA TOTAL	GRAND TOTAL					
			1	2	3	4	5A	5B	5C	6A	6B	7	8B	9	10	11	12	13	14 A	14 B	15	16	18						19	20	20	20	21
Eightmile Brook	20485	17-Oct					X						1	X	X	X	X	X	2X	X	8			X			X			X	3	5	17
Eightmile River	18518	6-Nov		X		X	X					X	4	X	X	X	X	X			5										0	2	11
Eightmile River	18936	2-Oct		X			X					X	3	X	X	X	X	X	X		6			X							1	6	16
Eightmile River	20480	10-Oct		X			X		X				3	X	X	X	X	X	X		6										0	8	17
Eightmile River, Tributary to (PV brook)	15314	2-May					X						1	X	X	X		X			4							X		1	4	10	
Elbow Brook	20509	30-Nov					X		2X				3	X	X	X	X	X			5	X		X			X	X		4	4	16	
Fourmile River	17322	24-Oct					X						1	X	X	X		X	X		5	X		X				X	3	6	15		
French Brook	15592	18-Oct											0	X					X		2						X		1	3	6		
Harris Brook	15313	4-May		X			X					X	3	X	X	X		X	X		5			X	X				2	4	14		
Harris Brook	15313	25-Oct		X			X						2	X	X	X		X	X		5								0	1	8		
Harris Brook	15313	6-Nov		X			X					X	3	X	X	X		X	X	X	6							X	1	1	11		
Harris Brook	19214	4-May		X			X		X			X	4	X		X	X	X	X		5			X				X	2	1	12		
Harris Brook	19214	24-Oct		X			X						2	X	X	X		X	X	X	6								0	2	10		
Hedge Brook	20126	2-May							X			X	2			X		X			2			X				X	2	2	8		
Jeremy River	20507	25-Sep		X			X						2	X	X		X	X	X		5							X	1	4	12		
Latimer Brook	18413	23-Oct					X		X			X	3	X	X	X			X	X	5	X							1	1	10		
Latimer Brook	18495	23-Oct					X		X		X		3	X	X	X	X		2X	X	7	X						X	2	7	19		

Waterbody	Station	Date	Taxa																					MOST SENSITIVE TOTAL	MODERATELY SENSITIVE TOTAL	LEAST SENSITIVE TOTAL	OTHER TAXA TOTAL	GRAND TOTAL				
			1	2	3	4	5A	5B	5C	6A	6B	7	8B	9	10	11	12	13	14 A	14 B	15	16	18						19	20	20	20
Moodus River	18871	19-Sep				X							1	X	X	X	X	X	X		6	X			X			X	X	4	3	14
Mount Hope River	20504	22-Nov		X		X	X		3X		X		7			X	X	X	X	X	5			X					1	6	19	
Mount Hope River Tributary ("Iron Mine Brook")	20503	15-Oct		X		X	X		X	X			5	X	X	X	X	X	X		5							X		1	4	15
Muddy Brook	16123	4-May				X	X		X	X		X	5	X	X	X	X	X			5							X		1	1	12
Muddy Brook	16123	6-Nov					X			X			2	X		X	X	X	2X		6							X		1	3	12
Pine Brook	20508	25-Oct					X						1	X	X	X	X	X	X		6			X						1	7	15
Railroad Brook	18816	18-Oct					X						1	X			X	X	X		4								0	1	6	
RAYMOND BROOK	16999	12-Sep		X			X						2	X	X	X	X	X	X		6				X				1	6	15	
Reservoir Brook	20501	5-Nov					X		X				2		X	X	X	X	X		5								0	2	9	
Roaring Brook #2	19458	2-May		X			X		2X		X		5			X		X			2								0	3	10	
Roaring Brook #2	19458	24-Oct		X			X		X		X		4	X	X		X	X	X		5			X					1	7	17	
SAFSTROM BROOK	17015	11-Oct				X	X						2	X	X			X	2X		5								0	3	10	
Bush Meadow Brook	20295	21-Nov					X		3X	X		X	7	X	X	X	X	X	2X		7			X	X				2	4	20	
Sprain Brook	16431	24-Oct		X			X		3X	X		X	7	X	X	X	X	X			5			X	X			X	3	5	20	
Still River	17423	8-Nov		X			X		X	X		X	5	X	X	X	X	X	2X	X	8			X				X	2	7	22	
Transylvania Brook	14712	17-Oct					X		X				2	X	X		X		X		4							X	1	1	8	

Interpreting Your Results

RBV monitoring locations that supported four or more 'Most Wanted' macroinvertebrate taxa, are considered to be 'healthy waters'. DEEP will integrate these '4 or more' results into the annual water quality assessment process, noting them as locations that support aquatic life use. Refer to Table 3 for additional monitoring result interpretation guidance. Local RBV Program Coordinators are encouraged to contact the State RBV Coordinator to discuss follow-up actions for specific monitoring locations as needed.



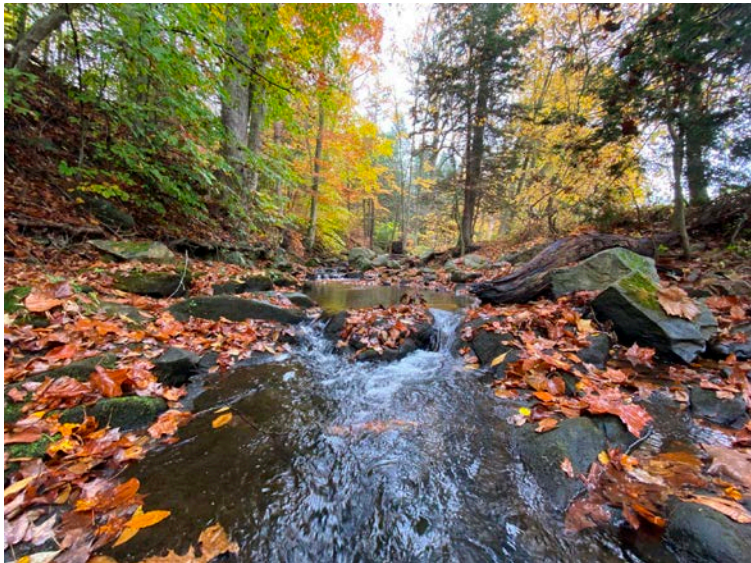
Now this is what we call a field office! Jean Pillo, a Local RBV Coordinator sorts through a sample while monitoring Iron Mine Brook. Photo courtesy of The Last Green Valley.

Table 3. Interpretation of RBV Results by Most Wanted Taxa Type Count.

# 'Most Wanted' Taxa	What Does it Tell Us?
<p>4+</p>	<p><i>Excellent!! Lots of very sensitive macroinvertebrate types were present – <u>you found a healthy stream segment!</u></i></p> <p>This is a very clear signal of excellent water quality as the 'Most Wanted' types cannot survive in degraded streams or otherwise low water quality conditions.</p> <p>DEEP Assessment Decision: The stream containing the monitoring location will be considered for 'Fully Supporting' State aquatic life use standards. Fully supporting streams or stream segments will be listed in the next Integrated Water Quality Report (IWQR) and added to the DEEP's running list of miles of Healthy Waters assessed. (The IWQR is prepared by DEEP and submitted to the U.S. Environmental Protection Agency every two years.)</p> <p>Recommended Volunteer Follow-Up Action: Revisit every 2 to 5 years to continue documenting the excellent health of this stream.</p>
<p>3</p>	<p><i>A Very <u>Good Sign</u> – Keep this Site on Your Radar!</i></p> <p>Three Most Wanted or very sensitive macroinvertebrate types in a sample is a strong signal of good to excellent water quality. Although three most wanted is not statistically enough data for DEEP to list the site as a healthy stream segment this time, this is a great find!</p> <p>DEEP Assessment Decision: No Assessment Made... but consider trying again!</p> <p>Recommended Volunteer Follow-Up Action: If this was the first time the site was monitored with RBV, this site should be a high priority candidate for monitoring next season.</p>
<p>0-2</p>	<p><i>Double check whether this is a good spot to be using the RBV method...</i></p> <p>More information is needed to determine the water quality at this site. Reasons for few most wanted may include poor water quality; <i>however</i>, few most wanted types should not be interpreted as a proof of degraded conditions. Other factors such as unusual flow conditions (i.e., very high or very low), lack of adequate riffle habitat, etc. could result in few most wanted types despite overall good water quality.</p> <p>DEEP Assessment Decision: No Assessment Made</p> <p>Recommended Volunteer Follow-Up Action: If this is a first-time monitoring location, and the site otherwise is suitable for RBV monitoring (e.g., small watershed with year-round flow and riffle habitat), assign the site a low to medium priority for follow-up monitoring.</p>

Appendix A: 2020 Local RBV Program Contact Information

Local RBV Program Name	Group Abbreviation	Coordinator(s)	Email
Bolton Conservation Commission	BCC	Rod Parlee	captundra@gmail.com
Candlewood Valley Trout Unlimited	CVTU	Paul Shaffer	Shafer.paul@att.net
Eightmile River Wild & Scenic Watershed	8MILE	Riley Doherty	rdoherthy@eightmile.org
Farmington River Watershed Association	FRWA	Alisa Phillips-Griggs	aphillipsgriggs@frwa.org
Niantic River Watershed Committee	NRWC	Judy Rondeau	judy.rondeau@comcast.net
Pomperaug River Watershed Coalition	PRWC	Carol Haskins	chaskins@pomperaug.org
Salmon River Watershed Partnership	SRWP	Pat Young	salmonriverct@att.net
The Last Green Valley	TLGV	Jean Pillo	jean.pillo@conservect.org
Three Rivers Community College	TRCC	Diba Khan-Bureau	dkhan-bureau@trcc.commnet.edu
Town of Greenwich IWWA	GIWWA	Doreen Carroll-Andrews	dcarroll@greenwichct.org
Town of Greenwich Conservation Commission	GCC	Sarah Coccaro	Sarah.Coccaro@greenwichct.org
Vernon Conservation Commission	VCC	Tom Ouellette	tom.r.ouellette@gmail.com
Washington Montessori School	WMS	Tom Fahsbender	tfahsbender@washingtonmontessori.org



East Spring Brook (left) and Eightmile Brook (right). Photos courtesy of the Pomperaug River Watershed Coalition.

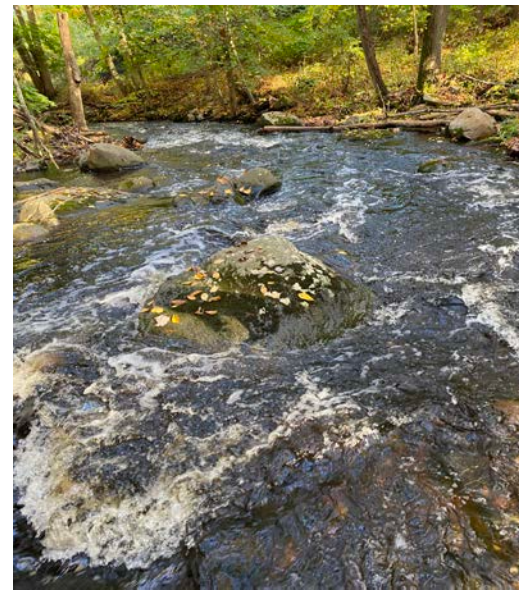
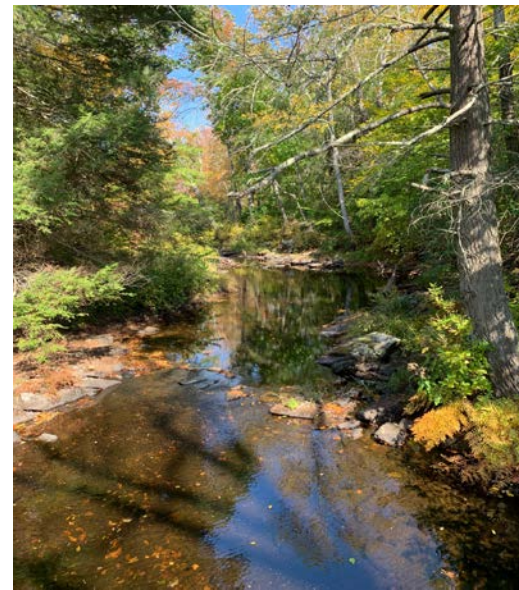
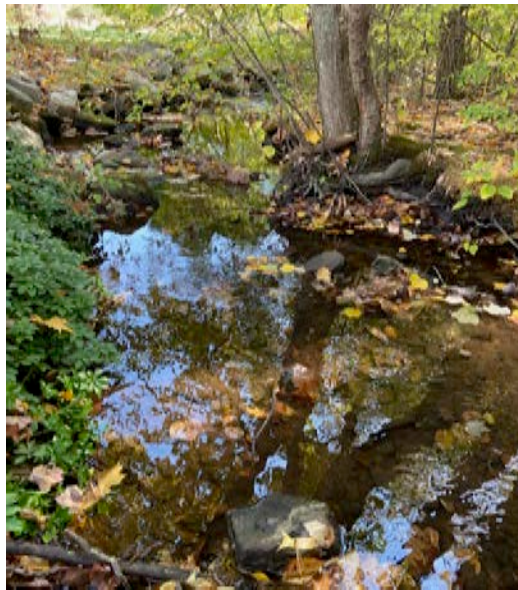
Appendix B: RBV Monitoring Station Description & Details

Locations are sorted by DEEP Station ID number. Note that the actual RBV monitoring location may be slightly upstream or downstream of the official DEEP station description noted below. Refer to Appendix A to interpret RBV group abbreviations.

Site #	Waterbody	Location Description	Town	Latitude	Longitude	Organization
14137	Blackledge River	US Confluence with Lyman Brook	MARLBOROUGH	41.60840	-72.42630	SRWP
14712	Transylvania Brook	30 meters upstream Whale Pass	SOUTHBURY	41.48400	-73.25840	PRWC
15312	Beaver Brook	Downstream bridge at 55-123 Beaver Brook Road	LYME	41.40995	-72.32906	TRCC
15313	Harris Brook	at Mouth	SALEM	41.47330	-72.28510	8MILE- TRCC
15314	Pleasant Valley Brook	at trail crossing off MacIntosh Road	LYME	41.41550	-72.33960	TRCC
15592	French Brook	at French Road	BOLTON	41.74420	-72.44850	BCC
15707	Deep Brook	upstream no name tributary to Deep Brook	NEWTOWN	41.40690	-73.28880	CVTU
15764	Deep Brook	100 meters below tributary called "oil creek"	NEWTOWN	41.40820	-73.28670	CVTU
16123	Muddy Brook	at Hopyard Road	EAST HADDAM	41.47560	-72.34200	TRCC
16333	Bullet Hill Brook	Adjacent to Heritage Rd Downstream Old Field Road	SOUTHBURY	41.48260	-73.22050	PRWC
16431	Sprain Brook	downstream Route 47 adjacent to Papermill Road	WOODBURY	41.56960	-73.22590	PRWC
16617	EAST BRANCH EIGHTMILE RIVER	Parallel to Darling Rd (Salem Rd)	SALEM	41.44360	-72.30530	TRCC
16999	RAYMOND BROOK	DS Grayville Rd	HEBRON	41.61280	-72.36810	SRWP
17015	SAFSTROM BROOK	US of Wood Bridge off Wopowag Rd.	EAST HAMPTON	41.52810	-72.47940	SRWP
17322	Fourmile River	at spring rock road	EAST LYME	41.33900	-72.25920	NRWC
17423	Still River	behind grove cemetery	EASTFORD	41.89320	-72.07790	TLGV
18413	Latimer Brook	50m Upstream Colony Road	EAST LYME	41.38397	-72.21429	NRWC
18495	Latimer Brook	US Route 1, behind Flanders Plaza	EAST LYME	41.36726	-72.20808	NRWC
18518	Eightmile River	Within Devil's Hopyard State Park	EAST HADDAM	41.47300	-72.33900	TRCC
18816	Railroad Brook	600m DS Bolton Notch Pond, Adj Hop River Rail Trail	BOLTON	41.79583	-72.45055	BCC
18821	Baker Brook, Unnamed tributary to	Downstream School Road	BOLTON	41.74794	-72.42410	BCC
18871	Moodus River	25m US of Gristmill Rd Crossing	EAST HADDAM	41.50859	-72.44826	SRWP
18936	Eightmile River	within Lyme Land Trust Pleasant Valley Preserve	LYME	41.41528	-72.33762	8MILE
19214	Harris Brook	0.25 mi upstream Music Vale Rd	SALEM	41.48739	-72.27044	TRCC
19215	Ransom Brook	30m downstream Darling Rd	SALEM	41.45494	-72.28356	TRCC
19458	Roaring Brook #2	Upstream Rt 82, behind Hadlyme Post Office	LYME	41.42348	-72.39911	TRCC
20044	East Spring Brook	30m downstream of Maddox Rd.	BETHLEHEM	41.63119	-73.18479	PRWC
20126	Hedge Brook	At West Dolbia Hill Road	EAST HADDAM	41.45207	-72.33766	TRCC

Appendix B Continued

Site #	Waterbody	Location Description	Town	Latitude	Longitude	Organization
20295	Bush Meadow Brook	DS of Scranton Road	STAFFORD	41.97735	-72.16798	TLGV
20375	Cranberry Meadow Brook	Within Nehantic State Forest, off Grassy Hill Rd	EAST LYME	41.41490	-72.24536	NRWC
20480	Eightmile River	Within Patrell Preserve, at footbridge	EAST HADDAM	41.43539	-72.33423	8MILE
20485	Eightmile Brook	Upstream O'Neill Rd, within OLT Dann Preserve	OXFORD	41.42940	-73.16045	PRWC
20486	Carmel Hill Brook	Within Marzahl Refuge, upstream of walking bridge	WOODBURY	41.59224	-73.23900	PRWC
20492	Burnham Brook	Adjacent trail within Burnham Brook Preserve	EAST HADDAM	41.46530	-72.32450	TRCC
20501	Reservoir Brook	Behind Middlesex CC campus; upstream Reservoir Rd	MIDDLETOWN	41.53930	-72.60870	MCC
20503	Iron Mountain Brook	50m downstream Hillside Avenue	ASHFORD	41.95081	-72.18511	TLGV
20504	Mount Hope River	75m downstream Turnpike Road, south of Waterfall Rd/Rte. 9	ASHFORD	41.91916	-72.17899	TLGV
20505	Bungee Brook	30m upstream Mill Bridge Road	EASTFORD	41.89635	-72.07132	TLGV
20507	Jeremy River	Upstream confluence with Blackledge River (at mouth)	COLCHESTER	41.57981	-72.42110	SRWP
20508	Pine Brook	300 ft downstream Pine Brook Rd, within HLT Preserve	HADDAM	41.51477	-72.49893	SRWP
20509	Elbow Brook	at mouth, 50 ft upstream confluence with Salmon River	EAST HAMPTON	41.51889	-72.48250	SRWP



From left to right: RBV monitoring sites on French Brook (Bolton), Latimer Brook (East Lyme), Eightmile River (East Haddam), and Deep Brook (Newtown).

Photos Courtesy of the Bolton Conservation Commission, East Lyme Commission for the Conservation of Natural Resources, the Eightmile River Wild & Scenic Watershed, and the Candlewood Valley Chapter of Trout Unlimited.

Appendix C: Detailed RBV Monitoring Results

Sample ID	Date	Station	Waterbody	Town	Category	Panel	Common Name	RBV Taxa	Detailed Organism ID
RBV-2020-001	2-May	19458	Roaring Brook #2	LYME	Most Sensitive	2	"Brush Legged" Mayfly	Isonychiidae	<i>Isonychia sp.</i>
RBV-2020-001	2-May	19458	Roaring Brook #2	LYME	Most Sensitive	7	Free-Living Caddisfly ("Michelin Man")	Rhyacophilidae	<i>Rhyacophila fuscula</i>
RBV-2020-001	2-May	19458	Roaring Brook #2	LYME	Most Sensitive	5A	Common Stonefly	Perlidae	<i>Acroneuria abnormis</i>
RBV-2020-001	2-May	19458	Roaring Brook #2	LYME	Most Sensitive	5C	Green Stonefly	Chloroperlidae	<i>Alloperla sp.</i>
RBV-2020-001	2-May	19458	Roaring Brook #2	LYME	Most Sensitive	5C	Perlodid Stonefly	Perlodidae	<i>Isoperla sp.</i>
RBV-2020-001	2-May	19458	Roaring Brook #2	LYME	Moderately Sensitive	11	Flatheaded Mayfly	Heptageniidae	<i>Epeorus sp.</i>
RBV-2020-001	2-May	19458	Roaring Brook #2	LYME	Moderately Sensitive	13	Dobsonfly or Fishfly	Corydalidae	<i>Nigronia serricornis</i>
RBV-2020-001	2-May	19458	Roaring Brook #2	LYME	Other	Misc. Other	Misc. Caddisfly	Brachycentridae	<i>Brachycentrus sp.</i>
RBV-2020-001	2-May	19458	Roaring Brook #2	LYME	Other	Misc. Other	Misc. Mayfly	Ephemerellidae	<i>Ephemerella invaria</i>
RBV-2020-001	2-May	19458	Roaring Brook #2	LYME	Other	Misc. Other	Misc. Caddisfly	Odontoceridae	<i>Psilotreta sp.</i>
RBV-2020-002	2-May	19215	East Branch Eightmile River Tributary ("Ransom Brook")	SALEM	Most Sensitive	4	Roach-Like Stonefly	Peltoperlidae	<i>Tallaperla sp.</i>
RBV-2020-002	2-May	19215	East Branch Eightmile River Tributary ("Ransom Brook")	SALEM	Most Sensitive	7	Free-Living Caddisfly ("Michelin Man")	Rhyacophilidae	<i>Rhyacophila fuscula</i>
RBV-2020-002	2-May	19215	East Branch Eightmile River Tributary ("Ransom Brook")	SALEM	Most Sensitive	5A	Common Stonefly	Perlidae	<i>Eccoptura xanthenes</i>
RBV-2020-002	2-May	19215	East Branch Eightmile River Tributary ("Ransom Brook")	SALEM	Most Sensitive	8B	Bizarre Caddisfly ("Plant Casemaker")	Lepidostomatidae	<i>Lepidostoma sp.</i>
RBV-2020-002	2-May	19215	East Branch Eightmile River Tributary ("Ransom Brook")	SALEM	Moderately Sensitive	11	Flatheaded Mayfly	Heptageniidae	<i>Maccaffertium modestum</i>
RBV-2020-002	2-May	19215	East Branch Eightmile River Tributary ("Ransom Brook")	SALEM	Moderately Sensitive	12	Water Penny	Psephenidae	<i>Psephenus herricki</i>
RBV-2020-002	2-May	19215	East Branch Eightmile River Tributary ("Ransom Brook")	SALEM	Moderately Sensitive	13	Dobsonfly or Fishfly	Corydalidae	<i>Nigronia serricornis</i>
RBV-2020-002	2-May	19215	East Branch Eightmile River Tributary ("Ransom Brook")	SALEM	Moderately Sensitive	14A	Dragonfly	Aeshnidae	<i>Boyeria vinosa</i>
RBV-2020-002	2-May	19215	East Branch Eightmile River Tributary ("Ransom Brook")	SALEM	Moderately Sensitive	14A	Dragonfly	Gomphidae	<i>Stylogomphus albistylus</i>
RBV-2020-002	2-May	19215	East Branch Eightmile River Tributary ("Ransom Brook")	SALEM	Moderately Sensitive	14B	Damselfly	Calopterygidae	<i>Calopteryx maculata</i>
RBV-2020-002	2-May	19215	East Branch Eightmile River Tributary ("Ransom Brook")	SALEM	Other	23	Crane Fly	Tipulidae	<i>Hexatoma sp.</i>
RBV-2020-002	2-May	19215	East Branch Eightmile River Tributary ("Ransom Brook")	SALEM	Other	Misc. Other	Misc. Mayfly	Ephemerellidae	<i>Ephemerella dorothea/excrucians</i>
RBV-2020-002	2-May	19215	East Branch Eightmile River Tributary ("Ransom Brook")	SALEM	Other	Misc. Other	Misc. Mayfly	Ephemerellidae	<i>Teloganopsis deficiens</i>
RBV-2020-003	2-May	15314	Eightmile River, Tributary to (PV brook)	LYME	Most Sensitive	5A	Common Stonefly	Perlidae	<i>Eccoptura xanthenes</i>
RBV-2020-003	2-May	15314	Eightmile River, Tributary to (PV brook)	LYME	Most Sensitive	5A	Common Stonefly	Perlidae	Perlidae
RBV-2020-003	2-May	15314	Eightmile River, Tributary to (PV brook)	LYME	Moderately Sensitive	9	Common Net Spinner Caddisfly	Hydropsychidae	<i>Hydropsyche betteni</i>
RBV-2020-003	2-May	15314	Eightmile River, Tributary to (PV brook)	LYME	Moderately Sensitive	9	Common Net Spinner Caddisfly	Hydropsychidae	<i>Hydropsyche slossonae</i>
RBV-2020-003	2-May	15314	Eightmile River, Tributary to (PV brook)	LYME	Moderately Sensitive	10	Fingernet Caddisfly	Philopotamidae	<i>Dolophilodes sp.</i>
RBV-2020-003	2-May	15314	Eightmile River, Tributary to (PV brook)	LYME	Moderately Sensitive	11	Flatheaded Mayfly	Heptageniidae	<i>Epeorus sp.</i>
RBV-2020-003	2-May	15314	Eightmile River, Tributary to (PV brook)	LYME	Moderately Sensitive	11	Flatheaded Mayfly	Heptageniidae	<i>Maccaffertium modestum</i>

Sample ID	Date	Station	Waterbody	Town	Category	Panel	Common Name	RBV Taxa	Detailed Organism ID
RBV-2020-003	2-May	15314	Eightmile River, Tributary to (PV brook)	LYME	Moderately Sensitive	13	Dobsonfly or Fishfly	Corydalidae	<i>Nigronia serricornis</i>
RBV-2020-003	2-May	15314	Eightmile River, Tributary to (PV brook)	LYME	Least Sensitive	21	Aquatic Worm	Oligochaeta	Oligochaeta
RBV-2020-003	2-May	15314	Eightmile River, Tributary to (PV brook)	LYME	Other	21	Aquatic Worm	Nematoda	Nematoda
RBV-2020-003	2-May	15314	Eightmile River, Tributary to (PV brook)	LYME	Other	Misc. Other	Toe Winged Beetle	Ptilodactylidae	<i>Anchytarsus bicolor</i>
RBV-2020-003	2-May	15314	Eightmile River, Tributary to (PV brook)	LYME	Other	Misc. Other	Misc. Mayfly	Ephemereillidae	<i>Ephemera dorothea/excrucians</i>
RBV-2020-003	2-May	15314	Eightmile River, Tributary to (PV brook)	LYME	Other	Misc. Other	Aquatic Moth	Lepidoptera	Lepidoptera
RBV-2020-004	2-May	20126	Hedge Brook	EAST HADDAM	Most Sensitive	7	Free-Living Caddisfly ("Michelin Man")	Rhyacophilidae	<i>Rhyacophila fuscula</i>
RBV-2020-004	2-May	20126	Hedge Brook	EAST HADDAM	Most Sensitive	5C	Perlotid Stonefly	Perlotidae	<i>Isoperla sp.</i>
RBV-2020-004	2-May	20126	Hedge Brook	EAST HADDAM	Moderately Sensitive	11	Flatheaded Mayfly	Heptageniidae	<i>Epeorus sp.</i>
RBV-2020-004	2-May	20126	Hedge Brook	EAST HADDAM	Moderately Sensitive	13	Dobsonfly or Fishfly	Corydalidae	<i>Nigronia serricornis</i>
RBV-2020-004	2-May	20126	Hedge Brook	EAST HADDAM	Least Sensitive	19	Black Fly	Simuliidae	<i>Prosimulium sp.</i>
RBV-2020-004	2-May	20126	Hedge Brook	EAST HADDAM	Least Sensitive	21	Aquatic Worm	Oligochaeta	<i>Oligochaeta</i>
RBV-2020-004	2-May	20126	Hedge Brook	EAST HADDAM	Other	Misc. Other	Misc. Mayfly	Ameletidae	<i>Ameletus sp.</i>
RBV-2020-004	2-May	20126	Hedge Brook	EAST HADDAM	Other	Misc. Other	Misc. Mayfly	Ephemereillidae	<i>Ephemera dorothea/excrucians</i>
RBV-2020-005	23-Oct	18495	Latimer Brook	EAST LYME	Most Sensitive	7	Free-Living Caddisfly ("Michelin Man")	Rhyacophilidae	<i>Rhyacophila fuscula</i>
RBV-2020-005	23-Oct	18495	Latimer Brook	EAST LYME	Most Sensitive	5A	Common Stonefly	Perlidae	<i>Acroneuria abnormis</i>
RBV-2020-005	23-Oct	18495	Latimer Brook	EAST LYME	Most Sensitive	5A	Common Stonefly	Perlidae	<i>Acroneuria carolinensis</i>
RBV-2020-005	23-Oct	18495	Latimer Brook	EAST LYME	Most Sensitive	5A	Common Stonefly	Perlidae	<i>Paragnetina media</i>
RBV-2020-005	23-Oct	18495	Latimer Brook	EAST LYME	Most Sensitive	6A	Saddle Casemaker Caddisfly	Glossosomatidae	<i>Glossosoma sp.</i>
RBV-2020-005	23-Oct	18495	Latimer Brook	EAST LYME	Moderately Sensitive	9	Common Net Spinner Caddisfly	Hydropsychidae	<i>Cheumatopsyche sp.</i>
RBV-2020-005	23-Oct	18495	Latimer Brook	EAST LYME	Moderately Sensitive	9	Common Net Spinner Caddisfly	Hydropsychidae	<i>Hydropsyche betteni</i>
RBV-2020-005	23-Oct	18495	Latimer Brook	EAST LYME	Moderately Sensitive	10	Fingernet Caddisfly	Philopotamidae	<i>Chimarra aterrima</i>
RBV-2020-005	23-Oct	18495	Latimer Brook	EAST LYME	Moderately Sensitive	11	Flatheaded Mayfly	Heptageniidae	<i>Maccaffertium modestum</i>
RBV-2020-005	23-Oct	18495	Latimer Brook	EAST LYME	Moderately Sensitive	12	Water Penny	Psephenidae	<i>Psephenus herricki</i>
RBV-2020-005	23-Oct	18495	Latimer Brook	EAST LYME	Moderately Sensitive	14A	Dragonfly	Aeshnidae	<i>Boyeria vinosa</i>
RBV-2020-005	23-Oct	18495	Latimer Brook	EAST LYME	Moderately Sensitive	14A	Dragonfly	Gomphidae	Gomphidae
RBV-2020-005	23-Oct	18495	Latimer Brook	EAST LYME	Moderately Sensitive	14A	Dragonfly	Gomphidae	<i>Ophiogomphus mainensis</i>
RBV-2020-005	23-Oct	18495	Latimer Brook	EAST LYME	Moderately Sensitive	14A	Dragonfly	Gomphidae	<i>Ophiogomphus sp.</i>
RBV-2020-005	23-Oct	18495	Latimer Brook	EAST LYME	Moderately Sensitive	14B	Damselfly	Calopterygidae	<i>Calopteryx maculata</i>
RBV-2020-005	23-Oct	18495	Latimer Brook	EAST LYME	Least Sensitive	15	Amphipod ("Scud")	Amphipoda	<i>Synurella sp.</i>
RBV-2020-005	23-Oct	18495	Latimer Brook	EAST LYME	Least Sensitive	21	Aquatic Worm	Oligochaeta	Oligochaeta
RBV-2020-005	23-Oct	18495	Latimer Brook	EAST LYME	Other	23	Crane Fly	Tipulidae	<i>Tipula sp.</i>
RBV-2020-005	23-Oct	18495	Latimer Brook	EAST LYME	Other	24	Rifle Beetle	Elmidae	<i>Optioservus sp.</i>

Sample ID	Date	Station	Waterbody	Town	Category	Panel	Common Name	RBV Taxa	Detailed Organism ID
RBV-2020-005	23-Oct	18495	Latimer Brook	EAST LYME	Other	26	Aquatic Snipe Fly	Athericidae	<i>Atherix sp.</i>
RBV-2020-005	23-Oct	18495	Latimer Brook	EAST LYME	Other	27	Flatworm	Turbellaria	Turbellaria
RBV-2020-005	23-Oct	18495	Latimer Brook	EAST LYME	Other	Misc. Other	Misc. Caddisfly	Brachycentridae	<i>Brachycentrus numerosus</i>
RBV-2020-005	23-Oct	18495	Latimer Brook	EAST LYME	Other	Misc. Other	Misc. Mayfly	Ephemereillidae	<i>Ephemerella subvaria</i>
RBV-2020-005	23-Oct	18495	Latimer Brook	EAST LYME	Other	Misc. Other	Misc. Caddisfly	Odontoceridae	<i>Psilotreta sp.</i>
RBV-2020-006	23-Oct	18413	Latimer Brook	EAST LYME	Most Sensitive	5A	Common Stonefly	Perlidae	<i>Acroneuria abnormis</i>
RBV-2020-006	23-Oct	18413	Latimer Brook	EAST LYME	Most Sensitive	5C	Winter Stonefly	Taeniopterygidae	<i>Taeniopteryx sp.</i>
RBV-2020-006	23-Oct	18413	Latimer Brook	EAST LYME	Most Sensitive	8B	Bizarre Caddisfly ("Plant Casemaker")	Lepidostomatidae	<i>Lepidostoma sp.</i>
RBV-2020-006	23-Oct	18413	Latimer Brook	EAST LYME	Moderately Sensitive	9	Common Net Spinner Caddisfly	Hydropsychidae	<i>Hydropsyche betteni</i>
RBV-2020-006	23-Oct	18413	Latimer Brook	EAST LYME	Moderately Sensitive	10	Fingernet Caddisfly	Philopotamidae	<i>Chimarra aterrima</i>
RBV-2020-006	23-Oct	18413	Latimer Brook	EAST LYME	Moderately Sensitive	11	Flatheaded Mayfly	Heptageniidae	<i>Maccaffertium modestum</i>
RBV-2020-006	23-Oct	18413	Latimer Brook	EAST LYME	Moderately Sensitive	11	Flatheaded Mayfly	Heptageniidae	<i>Maccaffertium sp.</i>
RBV-2020-006	23-Oct	18413	Latimer Brook	EAST LYME	Moderately Sensitive	14A	Dragonfly	Gomphidae	Gomphidae
RBV-2020-006	23-Oct	18413	Latimer Brook	EAST LYME	Moderately Sensitive	14A	Dragonfly	Gomphidae	<i>Stylogomphus albistylus</i>
RBV-2020-006	23-Oct	18413	Latimer Brook	EAST LYME	Moderately Sensitive	14B	Damselfly	Coenagrionidae	<i>Argia sp.</i>
RBV-2020-006	23-Oct	18413	Latimer Brook	EAST LYME	Least Sensitive	15	Amphipod ("Scud")	Amphipoda	<i>Synurella sp.</i>
RBV-2020-006	23-Oct	18413	Latimer Brook	EAST LYME	Other	26	Aquatic Snipe Fly	Athericidae	<i>Atherix sp.</i>
RBV-2020-007	24-Oct	20375	Cranberry Meadow Brook	EAST LYME	Most Sensitive	4	Roach-Like Stonefly	Peltoperlidae	<i>Tallaperla sp.</i>
RBV-2020-007	24-Oct	20375	Cranberry Meadow Brook	EAST LYME	Most Sensitive	5A	Common Stonefly	Perlidae	<i>Acroneuria abnormis</i>
RBV-2020-007	24-Oct	20375	Cranberry Meadow Brook	EAST LYME	Most Sensitive	5A	Common Stonefly	Perlidae	Perlidae
RBV-2020-007	24-Oct	20375	Cranberry Meadow Brook	EAST LYME	Moderately Sensitive	11	Flatheaded Mayfly	Heptageniidae	<i>Maccaffertium modestum</i>
RBV-2020-007	24-Oct	20375	Cranberry Meadow Brook	EAST LYME	Moderately Sensitive	12	Water Penny	Psephenidae	<i>Psephenus herricki</i>
RBV-2020-007	24-Oct	20375	Cranberry Meadow Brook	EAST LYME	Moderately Sensitive	13	Dobsonfly or Fishfly	Corydalidae	<i>Nigronia serricornis</i>
RBV-2020-007	24-Oct	20375	Cranberry Meadow Brook	EAST LYME	Moderately Sensitive	14A	Dragonfly	Aeshnidae	<i>Boyeria sp.</i>
RBV-2020-007	24-Oct	20375	Cranberry Meadow Brook	EAST LYME	Moderately Sensitive	14A	Dragonfly	Aeshnidae	<i>Boyeria vinosa</i>
RBV-2020-007	24-Oct	20375	Cranberry Meadow Brook	EAST LYME	Least Sensitive	18	Non-Biting Midge	Chironomidae	Chironomidae
RBV-2020-007	24-Oct	20375	Cranberry Meadow Brook	EAST LYME	Least Sensitive	21	Aquatic Worm	Oligochaeta	Oligochaeta
RBV-2020-007	24-Oct	20375	Cranberry Meadow Brook	EAST LYME	Other	23	Crane Fly	Tipulidae	<i>Tipula sp.</i>
RBV-2020-007	24-Oct	20375	Cranberry Meadow Brook	EAST LYME	Other	26	Aquatic Snipe Fly	Athericidae	<i>Atherix sp.</i>
RBV-2020-007	24-Oct	20375	Cranberry Meadow Brook	EAST LYME	Other	Misc. Other	Toe Winged Beetle	Ptilodactylidae	<i>Anchytarsus bicolor</i>
RBV-2020-008	24-Oct	17322	Fourmile River	EAST LYME	Most Sensitive	5A	Common Stonefly	Perlidae	<i>Acroneuria sp.</i>
RBV-2020-008	24-Oct	17322	Fourmile River	EAST LYME	Moderately Sensitive	9	Common Net Spinner Caddisfly	Hydropsychidae	<i>Cheumatopsyche sp.</i>
RBV-2020-008	24-Oct	17322	Fourmile River	EAST LYME	Moderately Sensitive	10	Fingernet Caddisfly	Philopotamidae	<i>Chimarra aterrima</i>

Sample ID	Date	Station	Waterbody	Town	Category	Panel	Common Name	RBV Taxa	Detailed Organism ID
RBV-2020-008	24-Oct	17322	Fourmile River	EAST LYME	Moderately Sensitive	11	Flatheaded Mayfly	Heptageniidae	<i>Maccaffertium modestum</i>
RBV-2020-008	24-Oct	17322	Fourmile River	EAST LYME	Moderately Sensitive	13	Dobsonfly or Fishfly	Corydalidae	<i>Nigronia serricornis</i>
RBV-2020-008	24-Oct	17322	Fourmile River	EAST LYME	Moderately Sensitive	14A	Dragonfly	Aeshnidae	<i>Boyeria vinosa</i>
RBV-2020-008	24-Oct	17322	Fourmile River	EAST LYME	Least Sensitive	15	Amphipod ("Scud")	Amphipoda	<i>Gammarus sp.</i>
RBV-2020-008	24-Oct	17322	Fourmile River	EAST LYME	Least Sensitive	18	Non-Biting Midge	Chironomidae	Chironomidae
RBV-2020-008	24-Oct	17322	Fourmile River	EAST LYME	Least Sensitive	21	Aquatic Worm	Oligochaeta	Oligochaeta
RBV-2020-008	24-Oct	17322	Fourmile River	EAST LYME	Other	23	Crane Fly	Tipulidae	<i>Tipula sp.</i>
RBV-2020-008	24-Oct	17322	Fourmile River	EAST LYME	Other	Misc. Other	Misc. Mayfly	Leptophlebiidae	<i>Leptophlebia sp.</i>
RBV-2020-008	24-Oct	17322	Fourmile River	EAST LYME	Other	Misc. Other	Misc. Caddisfly	Leptoceridae	<i>Oecetis persimilis</i>
RBV-2020-008	24-Oct	17322	Fourmile River	EAST LYME	Other	Misc. Other	Misc. Caddisfly	Dipseudopsidae	<i>Phylocentropus sp.</i>
RBV-2020-008	24-Oct	17322	Fourmile River	EAST LYME	Other	Misc. Other	Misc. Caddisfly	Odontoceridae	<i>Psilotreta sp.</i>
RBV-2020-008	24-Oct	17322	Fourmile River	EAST LYME	Other	Misc. Other	Alderfly	Sialidae	<i>Sialis sp.</i>
RBV-2020-009	18-Oct	18821	Baker Brook Tributary	BOLTON	Least Sensitive	18	Non-Biting Midge	Chironomidae	Chironomidae
RBV-2020-009	18-Oct	18821	Baker Brook Tributary	BOLTON	Least Sensitive	21	Aquatic Worm	Oligochaeta	Oligochaeta
RBV-2020-009	18-Oct	18821	Baker Brook Tributary	BOLTON	Other	24	Riffle Beetle	Elmidae	<i>Stenelmis sp.</i>
RBV-2020-010	18-Oct	15592	French Brook	BOLTON	Moderately Sensitive	9	Common Net Spinner Caddisfly	Hydropsychidae	<i>Cheumatopsyche sp.</i>
RBV-2020-010	18-Oct	15592	French Brook	BOLTON	Moderately Sensitive	14A	Dragonfly	Cordulegastridae	<i>Cordulegaster sp.</i>
RBV-2020-010	18-Oct	15592	French Brook	BOLTON	Least Sensitive	21	Aquatic Worm	Oligochaeta	Oligochaeta
RBV-2020-010	18-Oct	15592	French Brook	BOLTON	Other	22	Crayfish	Cambaridae	Cambaridae
RBV-2020-010	18-Oct	15592	French Brook	BOLTON	Other	23	Crane Fly	Tipulidae	<i>Tipula sp.</i>
RBV-2020-010	18-Oct	15592	French Brook	BOLTON	Other	Misc. Other	Toe Winged Beetle	Ptilodactylidae	<i>Anchytarsus bicolor</i>
RBV-2020-011	18-Oct	18816	Railroad Brook	BOLTON	Most Sensitive	5A	Common Stonefly	Perlidae	<i>Eccoptura xanthenes</i>
RBV-2020-011	18-Oct	18816	Railroad Brook	BOLTON	Moderately Sensitive	9	Common Net Spinner Caddisfly	Hydropsychidae	<i>Hydropsyche betteni</i>
RBV-2020-011	18-Oct	18816	Railroad Brook	BOLTON	Moderately Sensitive	12	Water Penny	Psephenidae	<i>Psephenus herricki</i>
RBV-2020-011	18-Oct	18816	Railroad Brook	BOLTON	Moderately Sensitive	13	Dobsonfly or Fishfly	Corydalidae	<i>Nigronia serricornis</i>
RBV-2020-011	18-Oct	18816	Railroad Brook	BOLTON	Moderately Sensitive	14A	Dragonfly	Aeshnidae	<i>Boyeria vinosa</i>
RBV-2020-011	18-Oct	18816	Railroad Brook	BOLTON	Other	Misc. Other	Toe Winged Beetle	Ptilodactylidae	<i>Anchytarsus bicolor</i>
RBV-2020-012	2-Oct	18936	Eightmile River	LYME	Most Sensitive	2	"Brush Legged" Mayfly	Isonychiidae	<i>Isonychia sp.</i>
RBV-2020-012	2-Oct	18936	Eightmile River	LYME	Most Sensitive	7	Free-Living Caddisfly ("Michelin Man")	Rhyacophilidae	<i>Rhyacophila mainensis</i>
RBV-2020-012	2-Oct	18936	Eightmile River	LYME	Most Sensitive	5A	Common Stonefly	Perlidae	<i>Acroneuria abnormis</i>
RBV-2020-012	2-Oct	18936	Eightmile River	LYME	Moderately Sensitive	9	Common Net Spinner Caddisfly	Hydropsychidae	<i>Cheumatopsyche sp.</i>
RBV-2020-012	2-Oct	18936	Eightmile River	LYME	Moderately Sensitive	9	Common Net Spinner Caddisfly	Hydropsychidae	<i>Hydropsyche sparna</i>
RBV-2020-012	2-Oct	18936	Eightmile River	LYME	Moderately Sensitive	10	Fingernet Caddisfly	Philopotamidae	<i>Chimarra aterrima</i>

Sample ID	Date	Station	Waterbody	Town	Category	Panel	Common Name	RBV Taxa	Detailed Organism ID
RBV-2020-012	2-Oct	18936	Eightmile River	LYME	Moderately Sensitive	11	Flatheaded Mayfly	Heptageniidae	<i>Maccaffertium modestum</i>
RBV-2020-012	2-Oct	18936	Eightmile River	LYME	Moderately Sensitive	11	Flatheaded Mayfly	Heptageniidae	<i>Maccaffertium vicarium</i>
RBV-2020-012	2-Oct	18936	Eightmile River	LYME	Moderately Sensitive	12	Water Penny	Psephenidae	<i>Psephenus herricki</i>
RBV-2020-012	2-Oct	18936	Eightmile River	LYME	Moderately Sensitive	13	Dobsonfly or Fishfly	Corydalidae	<i>Corydalus cornutus</i>
RBV-2020-012	2-Oct	18936	Eightmile River	LYME	Moderately Sensitive	14A	Dragonfly	Gomphidae	<i>Ophiogomphus mainensis</i>
RBV-2020-012	2-Oct	18936	Eightmile River	LYME	Least Sensitive	18	Non-Biting Midge	Chironomidae	Chironomidae
RBV-2020-012	2-Oct	18936	Eightmile River	LYME	Other	23	Crane Fly	Tipulidae	<i>Antocha sp.</i>
RBV-2020-012	2-Oct	18936	Eightmile River	LYME	Other	24	Riffle Beetle	Elmidae	<i>Stenelmis sp.</i>
RBV-2020-012	2-Oct	18936	Eightmile River	LYME	Other	24	Riffle Beetle	Elmidae	<i>Stenelmis sp.</i>
RBV-2020-012	2-Oct	18936	Eightmile River	LYME	Other	25	Small Minnow Mayfly	Baetidae	<i>Baetis pluto</i>
RBV-2020-012	2-Oct	18936	Eightmile River	LYME	Other	26	Aquatic Snipe Fly	Athericidae	<i>Atherix sp.</i>
RBV-2020-012	2-Oct	18936	Eightmile River	LYME	Other	Misc. Other	Misc. Caddisfly	Brachycentridae	<i>Brachycentrus appalachia</i>
RBV-2020-012	2-Oct	18936	Eightmile River	LYME	Other	Misc. Other	Misc. Caddisfly	Odontoceridae	<i>Psilotreta sp.</i>
RBV-2020-013	25-Oct	15313	Harris Brook	SALEM	Most Sensitive	2	"Brush Legged" Mayfly	Isonychiidae	<i>Isonychia sp.</i>
RBV-2020-013	25-Oct	15313	Harris Brook	SALEM	Most Sensitive	5A	Common Stonefly	Perlidae	<i>Acroneuria abnormis</i>
RBV-2020-013	25-Oct	15313	Harris Brook	SALEM	Most Sensitive	5A	Common Stonefly	Perlidae	<i>Paragnetina media</i>
RBV-2020-013	25-Oct	15313	Harris Brook	SALEM	Moderately Sensitive	9	Common Net Spinner Caddisfly	Hydropsychidae	<i>Hydropsyche bronta</i>
RBV-2020-013	25-Oct	15313	Harris Brook	SALEM	Moderately Sensitive	9	Common Net Spinner Caddisfly	Hydropsychidae	<i>Hydropsyche sparna</i>
RBV-2020-013	25-Oct	15313	Harris Brook	SALEM	Moderately Sensitive	10	Fingernet Caddisfly	Philopotamidae	<i>Chimarra aterrima</i>
RBV-2020-013	25-Oct	15313	Harris Brook	SALEM	Moderately Sensitive	11	Flatheaded Mayfly	Heptageniidae	<i>Maccaffertium modestum</i>
RBV-2020-013	25-Oct	15313	Harris Brook	SALEM	Moderately Sensitive	13	Dobsonfly or Fishfly	Corydalidae	<i>Corydalus cornutus</i>
RBV-2020-013	25-Oct	15313	Harris Brook	SALEM	Moderately Sensitive	13	Dobsonfly or Fishfly	Corydalidae	<i>Nigronia serricornis</i>
RBV-2020-013	25-Oct	15313	Harris Brook	SALEM	Moderately Sensitive	14A	Dragonfly	Gomphidae	<i>Ophiogomphus mainensis</i>
RBV-2020-013	25-Oct	15313	Harris Brook	SALEM	Other	Misc. Other	Misc. Mayfly	Ephemerellidae	<i>Ephemerella sp.</i>
RBV-2020-014	10-Oct	20480	Eightmile River	EAST HADDAM	Most Sensitive	2	"Brush Legged" Mayfly	Isonychiidae	<i>Isonychia sp.</i>
RBV-2020-014	10-Oct	20480	Eightmile River	EAST HADDAM	Most Sensitive	5A	Common Stonefly	Perlidae	<i>Acroneuria abnormis</i>
RBV-2020-014	10-Oct	20480	Eightmile River	EAST HADDAM	Most Sensitive	5C	Green Stonefly	Chloroperlidae	Chloroperlidae
RBV-2020-014	10-Oct	20480	Eightmile River	EAST HADDAM	Moderately Sensitive	9	Common Net Spinner Caddisfly	Hydropsychidae	<i>Hydropsyche betteni</i>
RBV-2020-014	10-Oct	20480	Eightmile River	EAST HADDAM	Moderately Sensitive	9	Common Net Spinner Caddisfly	Hydropsychidae	<i>Hydropsyche bronta</i>
RBV-2020-014	10-Oct	20480	Eightmile River	EAST HADDAM	Moderately Sensitive	9	Common Net Spinner Caddisfly	Hydropsychidae	<i>Hydropsyche morosa</i>
RBV-2020-014	10-Oct	20480	Eightmile River	EAST HADDAM	Moderately Sensitive	10	Fingernet Caddisfly	Philopotamidae	<i>Chimarra aterrima</i>
RBV-2020-014	10-Oct	20480	Eightmile River	EAST HADDAM	Moderately Sensitive	10	Fingernet Caddisfly	Philopotamidae	<i>Dolophilodes sp.</i>
RBV-2020-014	10-Oct	20480	Eightmile River	EAST HADDAM	Moderately Sensitive	11	Flatheaded Mayfly	Heptageniidae	<i>Maccaffertium sp.</i>

Sample ID	Date	Station	Waterbody	Town	Category	Panel	Common Name	RBV Taxa	Detailed Organism ID
RBV-2020-014	10-Oct	20480	Eightmile River	EAST HADDAM	Moderately Sensitive	12	Water Penny	Psephenidae	<i>Psephenus herricki</i>
RBV-2020-014	10-Oct	20480	Eightmile River	EAST HADDAM	Moderately Sensitive	13	Dobsonfly or Fishfly	Corydalidae	<i>Nigronia serricornis</i>
RBV-2020-014	10-Oct	20480	Eightmile River	EAST HADDAM	Moderately Sensitive	14A	Dragonfly	Gomphidae	<i>Ophiogomphus sp.</i>
RBV-2020-014	10-Oct	20480	Eightmile River	EAST HADDAM	Moderately Sensitive	14A	Dragonfly	Gomphidae	<i>Stylogomphus albistylus</i>
RBV-2020-014	10-Oct	20480	Eightmile River	EAST HADDAM	Other	24	Riffle Beetle	Elmidae	<i>Optioservus ovalis</i>
RBV-2020-014	10-Oct	20480	Eightmile River	EAST HADDAM	Other	25	Small Minnow Mayfly	Baetidae	<i>Baetis tricaudatus</i>
RBV-2020-014	10-Oct	20480	Eightmile River	EAST HADDAM	Other	25	Small Minnow Mayfly	Baetidae	<i>Plautitus sp.</i>
RBV-2020-014	10-Oct	20480	Eightmile River	EAST HADDAM	Other	26	Aquatic Snipe Fly	Athericidae	<i>Atherix sp.</i>
RBV-2020-014	10-Oct	20480	Eightmile River	EAST HADDAM	Other	Misc. Other	Toe Winged Beetle	Ptilodactylidae	<i>Anchytarsus bicolor</i>
RBV-2020-014	10-Oct	20480	Eightmile River	EAST HADDAM	Other	Misc. Other	Misc. Caddisfly	Brachycentridae	<i>Brachycentrus appalachia</i>
RBV-2020-014	10-Oct	20480	Eightmile River	EAST HADDAM	Other	Misc. Other	Misc. Mayfly	Ephemereillidae	<i>Ephemerella sp.</i>
RBV-2020-014	10-Oct	20480	Eightmile River	EAST HADDAM	Other	Misc. Other	Misc. Mayfly	Leptophlebiidae	Leptophlebiidae
RBV-2020-014	10-Oct	20480	Eightmile River	EAST HADDAM	Other	Misc. Other	Misc. Caddisfly	Odontoceridae	<i>Psilotreta sp.</i>
RBV-2020-015	17-Oct	20485	Eightmile Brook	OXFORD	Most Sensitive	5A	Common Stonefly	Perlidae	<i>Acroneuria abnormis</i>
RBV-2020-015	17-Oct	20485	Eightmile Brook	OXFORD	Moderately Sensitive	9	Common Net Spinner Caddisfly	Hydropsychidae	<i>Cheumatopsyche sp.</i>
RBV-2020-015	17-Oct	20485	Eightmile Brook	OXFORD	Moderately Sensitive	9	Common Net Spinner Caddisfly	Hydropsychidae	<i>Hydropsyche betteni</i>
RBV-2020-015	17-Oct	20485	Eightmile Brook	OXFORD	Moderately Sensitive	10	Fingernet Caddisfly	Philopotamidae	<i>Chimarra aterrima</i>
RBV-2020-015	17-Oct	20485	Eightmile Brook	OXFORD	Moderately Sensitive	11	Flatheaded Mayfly	Heptageniidae	<i>Maccaffertium modestum</i>
RBV-2020-015	17-Oct	20485	Eightmile Brook	OXFORD	Moderately Sensitive	11	Flatheaded Mayfly	Heptageniidae	<i>Stenacron interpunctatum</i>
RBV-2020-015	17-Oct	20485	Eightmile Brook	OXFORD	Moderately Sensitive	12	Water Penny	Psephenidae	<i>Ectopria sp.</i>
RBV-2020-015	17-Oct	20485	Eightmile Brook	OXFORD	Moderately Sensitive	12	Water Penny	Psephenidae	<i>Psephenus herricki</i>
RBV-2020-015	17-Oct	20485	Eightmile Brook	OXFORD	Moderately Sensitive	13	Dobsonfly or Fishfly	Corydalidae	<i>Nigronia serricornis</i>
RBV-2020-015	17-Oct	20485	Eightmile Brook	OXFORD	Moderately Sensitive	14A	Dragonfly	Aeshnidae	<i>Boyeria vinosa</i>
RBV-2020-015	17-Oct	20485	Eightmile Brook	OXFORD	Moderately Sensitive	14A	Dragonfly	Gomphidae	Gomphidae
RBV-2020-015	17-Oct	20485	Eightmile Brook	OXFORD	Moderately Sensitive	14A	Dragonfly	Gomphidae	<i>Stylogomphus albistylus</i>
RBV-2020-015	17-Oct	20485	Eightmile Brook	OXFORD	Moderately Sensitive	14B	Damselfly	Calopterygidae	<i>Calopteryx sp.</i>
RBV-2020-015	17-Oct	20485	Eightmile Brook	OXFORD	Least Sensitive	18	Non-Biting Midge	Chironomidae	Chironomidae
RBV-2020-015	17-Oct	20485	Eightmile Brook	OXFORD	Least Sensitive	20	Freshwater Snail	Physidae	<i>Physa sp.</i>
RBV-2020-015	17-Oct	20485	Eightmile Brook	OXFORD	Least Sensitive	21	Aquatic Worm	Oligochaeta	Oligochaeta
RBV-2020-015	17-Oct	20485	Eightmile Brook	OXFORD	Other	23	Crane Fly	Tipulidae	<i>Tipula sp.</i>
RBV-2020-015	17-Oct	20485	Eightmile Brook	OXFORD	Other	24	Riffle Beetle	Elmidae	<i>Macronychus glabratus</i>
RBV-2020-015	17-Oct	20485	Eightmile Brook	OXFORD	Other	24	Riffle Beetle	Elmidae	<i>Stenelmis sp.</i>
RBV-2020-015	17-Oct	20485	Eightmile Brook	OXFORD	Other	Misc. Other	Misc. Mayfly	Ephemereillidae	<i>Ephemerella sp.</i>

Sample ID	Date	Station	Waterbody	Town	Category	Panel	Common Name	RBV Taxa	Detailed Organism ID
RBV-2020-015	17-Oct	20485	Eightmile Brook	OXFORD	Other	Misc. Other	Misc. Mayfly	Ephemereillidae	<i>Eurylophella sp.</i>
RBV-2020-015	17-Oct	20485	Eightmile Brook	OXFORD	Other	Misc. Other	Alderfly	Sialidae	<i>Sialis sp.</i>
RBV-2020-016	17-Oct	16333	Bullet Hill Brook	SOUTHURY	Most Sensitive	6A	Saddle Casemaker Caddisfly	Glossosomatidae	<i>Glossosoma sp.</i>
RBV-2020-016	17-Oct	16333	Bullet Hill Brook	SOUTHURY	Most Sensitive	6B	Cornucopia Casemaker Caddisfly	Apataniidae	<i>Apatania sp.</i>
RBV-2020-016	17-Oct	16333	Bullet Hill Brook	SOUTHURY	Most Sensitive	8B	Bizarre Caddisfly ("Plant Casemaker")	Lepidostomatidae	<i>Lepidostoma sp.</i>
RBV-2020-016	17-Oct	16333	Bullet Hill Brook	SOUTHURY	Moderately Sensitive	9	Common Net Spinner Caddisfly	Hydropsychidae	<i>Hydropsyche bronta</i>
RBV-2020-016	17-Oct	16333	Bullet Hill Brook	SOUTHURY	Moderately Sensitive	10	Fingernet Caddisfly	Philopotamidae	<i>Chimarra aterrima</i>
RBV-2020-016	17-Oct	16333	Bullet Hill Brook	SOUTHURY	Moderately Sensitive	11	Flatheaded Mayfly	Heptageniidae	<i>Maccaffertium modestum</i>
RBV-2020-016	17-Oct	16333	Bullet Hill Brook	SOUTHURY	Moderately Sensitive	12	Water Penny	Psephenidae	<i>Psephenus herricki</i>
RBV-2020-016	17-Oct	16333	Bullet Hill Brook	SOUTHURY	Moderately Sensitive	13	Dobsonfly or Fishfly	Corydalidae	<i>Nigronia serricornis</i>
RBV-2020-016	17-Oct	16333	Bullet Hill Brook	SOUTHURY	Moderately Sensitive	14A	Dragonfly	Cordulegastridae	<i>Cordulegaster sp.</i>
RBV-2020-016	17-Oct	16333	Bullet Hill Brook	SOUTHURY	Least Sensitive	15	Amphipod ("Scud")	Amphipoda	<i>Gammarus sp.</i>
RBV-2020-016	17-Oct	16333	Bullet Hill Brook	SOUTHURY	Least Sensitive	18	Non-Biting Midge	Chironomidae	Chironomidae
RBV-2020-016	17-Oct	16333	Bullet Hill Brook	SOUTHURY	Least Sensitive	20	Freshwater Snail	Physidae	<i>Physa sp.</i>
RBV-2020-016	17-Oct	16333	Bullet Hill Brook	SOUTHURY	Least Sensitive	21	Aquatic Worm	Oligochaeta	Oligochaeta
RBV-2020-016	17-Oct	16333	Bullet Hill Brook	SOUTHURY	Other	23	Crane Fly	Tipulidae	<i>Tipula sp.</i>
RBV-2020-016	17-Oct	16333	Bullet Hill Brook	SOUTHURY	Other	24	Riffle Beetle	Elmidae	<i>Optioservus ovalis</i>
RBV-2020-016	17-Oct	16333	Bullet Hill Brook	SOUTHURY	Other	24	Riffle Beetle	Elmidae	<i>Stenelmis sp.</i>
RBV-2020-016	17-Oct	16333	Bullet Hill Brook	SOUTHURY	Other	25	Small Minnow Mayfly	Baetidae	<i>Baetis tricaudatus</i>
RBV-2020-017	17-Oct	14712	Transylvania Brook	SOUTHURY	Most Sensitive	5A	Common Stonefly	Perlidae	<i>Eccopectura xanthenes</i>
RBV-2020-017	17-Oct	14712	Transylvania Brook	SOUTHURY	Most Sensitive	5C	Small Winter Stonefly	Capniidae	<i>Allocaupnia sp.</i>
RBV-2020-017	17-Oct	14712	Transylvania Brook	SOUTHURY	Moderately Sensitive	9	Common Net Spinner Caddisfly	Hydropsychidae	<i>Hydropsyche betteni</i>
RBV-2020-017	17-Oct	14712	Transylvania Brook	SOUTHURY	Moderately Sensitive	10	Fingernet Caddisfly	Philopotamidae	<i>Chimarra aterrima</i>
RBV-2020-017	17-Oct	14712	Transylvania Brook	SOUTHURY	Moderately Sensitive	12	Water Penny	Psephenidae	<i>Psephenus herricki</i>
RBV-2020-017	17-Oct	14712	Transylvania Brook	SOUTHURY	Moderately Sensitive	14A	Dragonfly	Aeshnidae	<i>Boyeria vinosa</i>
RBV-2020-017	17-Oct	14712	Transylvania Brook	SOUTHURY	Least Sensitive	21	Aquatic Worm	Oligochaeta	Oligochaeta
RBV-2020-017	17-Oct	14712	Transylvania Brook	SOUTHURY	Other	23	Crane Fly	Tipulidae	<i>Tipula sp.</i>
RBV-2020-018	24-Oct	20486	Carmel Hill Brook	WOODBURY	Most Sensitive	5A	Common Stonefly	Perlidae	<i>Acroneuria sp.</i>
RBV-2020-018	24-Oct	20486	Carmel Hill Brook	WOODBURY	Most Sensitive	5A	Common Stonefly	Perlidae	<i>Paragnetina immarginata</i>
RBV-2020-018	24-Oct	20486	Carmel Hill Brook	WOODBURY	Most Sensitive	5C	Small Winter Stonefly	Capniidae	<i>Allocaupnia sp.</i>
RBV-2020-018	24-Oct	20486	Carmel Hill Brook	WOODBURY	Most Sensitive	5C	Winter Stonefly	Taeniopterygidae	<i>Taeniopteryx sp.</i>
RBV-2020-018	24-Oct	20486	Carmel Hill Brook	WOODBURY	Most Sensitive	6A	Saddle Casemaker Caddisfly	Glossosomatidae	<i>Glossosoma sp.</i>
RBV-2020-018	24-Oct	20486	Carmel Hill Brook	WOODBURY	Most Sensitive	8B	Bizarre Caddisfly ("Plant Casemaker")	Lepidostomatidae	<i>Lepidostoma sp.</i>

Sample ID	Date	Station	Waterbody	Town	Category	Panel	Common Name	RBV Taxa	Detailed Organism ID
RBV-2020-018	24-Oct	20486	Carmel Hill Brook	WOODBURY	Moderately Sensitive	10	Fingernet Caddisfly	Philopotamidae	<i>Chimarra aterrima</i>
RBV-2020-018	24-Oct	20486	Carmel Hill Brook	WOODBURY	Moderately Sensitive	11	Flatheaded Mayfly	Heptageniidae	<i>Epeorus sp.</i>
RBV-2020-018	24-Oct	20486	Carmel Hill Brook	WOODBURY	Moderately Sensitive	11	Flatheaded Mayfly	Heptageniidae	<i>Maccaffertium modestum</i>
RBV-2020-018	24-Oct	20486	Carmel Hill Brook	WOODBURY	Moderately Sensitive	11	Flatheaded Mayfly	Heptageniidae	<i>Maccaffertium sp.</i>
RBV-2020-018	24-Oct	20486	Carmel Hill Brook	WOODBURY	Moderately Sensitive	12	Water Penny	Psephenidae	<i>Psephenus herricki</i>
RBV-2020-018	24-Oct	20486	Carmel Hill Brook	WOODBURY	Moderately Sensitive	13	Dobsonfly or Fishfly	Corydalidae	<i>Nigronia serricornis</i>
RBV-2020-018	24-Oct	20486	Carmel Hill Brook	WOODBURY	Least Sensitive	21	Aquatic Worm	Oligochaeta	<i>Oligochaeta</i>
RBV-2020-018	24-Oct	20486	Carmel Hill Brook	WOODBURY	Other	23	Crane Fly	Tipulidae	<i>Dicranota sp.</i>
RBV-2020-018	24-Oct	20486	Carmel Hill Brook	WOODBURY	Other	23	Crane Fly	Tipulidae	<i>Hexatoma sp.</i>
RBV-2020-018	24-Oct	20486	Carmel Hill Brook	WOODBURY	Other	24	Riffle Beetle	Elmidae	<i>Optioservus ovalis</i>
RBV-2020-018	24-Oct	20486	Carmel Hill Brook	WOODBURY	Other	24	Riffle Beetle	Elmidae	<i>Optioservus sp.</i>
RBV-2020-018	24-Oct	20486	Carmel Hill Brook	WOODBURY	Other	Misc. Other	Misc. Mayfly	Leptophlebiidae	Leptophlebiidae
RBV-2020-018	24-Oct	20486	Carmel Hill Brook	WOODBURY	Other	Misc. Other	Misc. Mayfly	Leptophlebiidae	<i>Neoleptophlebia sp.</i>
RBV-2020-019	24-Oct	16431	Sprain Brook	WOODBURY	Most Sensitive	2	"Brush Legged" Mayfly	Isonychiidae	<i>Isonychia sp.</i>
RBV-2020-019	24-Oct	16431	Sprain Brook	WOODBURY	Most Sensitive	5A	Common Stonefly	Perlidae	<i>Acroneuria carolinensis</i>
RBV-2020-019	24-Oct	16431	Sprain Brook	WOODBURY	Most Sensitive	5C	Small Winter Stonefly	Capniidae	<i>Allocapnia sp.</i>
RBV-2020-019	24-Oct	16431	Sprain Brook	WOODBURY	Most Sensitive	5C	Green Stonefly	Chloroperlidae	Chloroperlidae
RBV-2020-019	24-Oct	16431	Sprain Brook	WOODBURY	Most Sensitive	5C	Winter Stonefly	Taeniopterygidae	<i>Taeniopteryx sp.</i>
RBV-2020-019	24-Oct	16431	Sprain Brook	WOODBURY	Most Sensitive	6A	Saddle Casemaker Caddisfly	Glossosomatidae	<i>Glossosoma sp.</i>
RBV-2020-019	24-Oct	16431	Sprain Brook	WOODBURY	Most Sensitive	8B	Bizarre Caddisfly ("Plant Casemaker")	Lepidostomatidae	<i>Lepidostoma sp.</i>
RBV-2020-019	24-Oct	16431	Sprain Brook	WOODBURY	Moderately Sensitive	9	Common Net Spinner Caddisfly	Hydropsychidae	<i>Hydropsyche betteni</i>
RBV-2020-019	24-Oct	16431	Sprain Brook	WOODBURY	Moderately Sensitive	10	Fingernet Caddisfly	Philopotamidae	<i>Chimarra aterrima</i>
RBV-2020-019	24-Oct	16431	Sprain Brook	WOODBURY	Moderately Sensitive	11	Flatheaded Mayfly	Heptageniidae	<i>Maccaffertium modestum</i>
RBV-2020-019	24-Oct	16431	Sprain Brook	WOODBURY	Moderately Sensitive	12	Water Penny	Psephenidae	<i>Psephenus herricki</i>
RBV-2020-019	24-Oct	16431	Sprain Brook	WOODBURY	Moderately Sensitive	13	Dobsonfly or Fishfly	Corydalidae	<i>Nigronia serricornis</i>
RBV-2020-019	24-Oct	16431	Sprain Brook	WOODBURY	Least Sensitive	18	Non-Biting Midge	Chironomidae	Chironomidae
RBV-2020-019	24-Oct	16431	Sprain Brook	WOODBURY	Least Sensitive	19	Black Fly	Simuliidae	<i>Simulium sp.</i>
RBV-2020-019	24-Oct	16431	Sprain Brook	WOODBURY	Least Sensitive	21	Aquatic Worm	Oligochaeta	Oligochaeta
RBV-2020-019	24-Oct	16431	Sprain Brook	WOODBURY	Other	23	Crane Fly	Tipulidae	<i>Tipula sp.</i>
RBV-2020-019	24-Oct	16431	Sprain Brook	WOODBURY	Other	25	Small Minnow Mayfly	Baetidae	<i>Acentrella turbida</i>
RBV-2020-019	24-Oct	16431	Sprain Brook	WOODBURY	Other	26	Aquatic Snipe Fly	Athericidae	<i>Atherix sp.</i>
RBV-2020-019	24-Oct	16431	Sprain Brook	WOODBURY	Other	Misc. Other	Water Mite	Lebertiidae	<i>Lebertia sp.</i>
RBV-2020-019	24-Oct	16431	Sprain Brook	WOODBURY	Other	Misc. Other	Misc. Mayfly	Leptophlebiidae	<i>Neoleptophlebia sp.</i>

Sample ID	Date	Station	Waterbody	Town	Category	Panel	Common Name	RBV Taxa	Detailed Organism ID
RBV-2020-020	24-Oct	20044	East Spring Brook	BETHLEHEM	Most Sensitive	4	Roach-Like Stonefly	Peltoperlidae	<i>Tallaperla sp.</i>
RBV-2020-020	24-Oct	20044	East Spring Brook	BETHLEHEM	Most Sensitive	7	Free-Living Caddisfly ("Michelin Man")	Rhyacophilidae	<i>Rhyacophila carolina</i>
RBV-2020-020	24-Oct	20044	East Spring Brook	BETHLEHEM	Most Sensitive	7	Free-Living Caddisfly ("Michelin Man")	Rhyacophilidae	<i>Rhyacophila fuscula</i>
RBV-2020-020	24-Oct	20044	East Spring Brook	BETHLEHEM	Most Sensitive	7	Free-Living Caddisfly ("Michelin Man")	Rhyacophilidae	<i>Rhyacophila sp.</i>
RBV-2020-020	24-Oct	20044	East Spring Brook	BETHLEHEM	Most Sensitive	5A	Common Stonefly	Perlidae	<i>Acroneuria carolinensis</i>
RBV-2020-020	24-Oct	20044	East Spring Brook	BETHLEHEM	Most Sensitive	5B	Giant Stonefly	Pteronarcyidae	<i>Pteronarcys biloba</i>
RBV-2020-020	24-Oct	20044	East Spring Brook	BETHLEHEM	Most Sensitive	5C	Small Winter Stonefly	Capniidae	<i>Allocapnia sp.</i>
RBV-2020-020	24-Oct	20044	East Spring Brook	BETHLEHEM	Most Sensitive	5C	Winter Stonefly	Taeniopterygidae	<i>Taeniopteryx sp.</i>
RBV-2020-020	24-Oct	20044	East Spring Brook	BETHLEHEM	Most Sensitive	6A	Saddle Casemaker Caddisfly	Glossosomatidae	Glossosomatidae
RBV-2020-020	24-Oct	20044	East Spring Brook	BETHLEHEM	Most Sensitive	6B	Cornucopia Casemaker Caddisfly	Apataniidae	<i>Apatania sp.</i>
RBV-2020-020	24-Oct	20044	East Spring Brook	BETHLEHEM	Moderately Sensitive	9	Common Net Spinner Caddisfly	Hydropsychidae	<i>Hydropsyche betteni</i>
RBV-2020-020	24-Oct	20044	East Spring Brook	BETHLEHEM	Moderately Sensitive	9	Common Net Spinner Caddisfly	Hydropsychidae	<i>Hydropsyche bronta</i>
RBV-2020-020	24-Oct	20044	East Spring Brook	BETHLEHEM	Moderately Sensitive	10	Fingernet Caddisfly	Philopotamidae	<i>Chimarra aterrima</i>
RBV-2020-020	24-Oct	20044	East Spring Brook	BETHLEHEM	Moderately Sensitive	11	Flatheaded Mayfly	Heptageniidae	<i>Maccaffertium modestum</i>
RBV-2020-020	24-Oct	20044	East Spring Brook	BETHLEHEM	Moderately Sensitive	12	Water Penny	Psephenidae	<i>Psephenus herricki</i>
RBV-2020-020	24-Oct	20044	East Spring Brook	BETHLEHEM	Moderately Sensitive	13	Dobsonfly or Fishfly	Corydalidae	<i>Nigronia serricornis</i>
RBV-2020-020	24-Oct	20044	East Spring Brook	BETHLEHEM	Least Sensitive	21	Aquatic Worm	Oligochaeta	<i>Oligochaeta</i>
RBV-2020-020	24-Oct	20044	East Spring Brook	BETHLEHEM	Other	23	Crane Fly	Tipulidae	<i>Antocha sp.</i>
RBV-2020-020	24-Oct	20044	East Spring Brook	BETHLEHEM	Other	24	Riffle Beetle	Elmidae	<i>Optioservus ovalis</i>
RBV-2020-020	24-Oct	20044	East Spring Brook	BETHLEHEM	Other	24	Riffle Beetle	Elmidae	<i>Optioservus sp.</i>
RBV-2020-020	24-Oct	20044	East Spring Brook	BETHLEHEM	Other	25	Small Minnow Mayfly	Baetidae	<i>Acentrella turbida</i>
RBV-2020-020	24-Oct	20044	East Spring Brook	BETHLEHEM	Other	Misc. Other	Misc. Mayfly	Ephemerellidae	<i>Ephemerella sp.</i>
RBV-2020-020	24-Oct	20044	East Spring Brook	BETHLEHEM	Other	Misc. Other	Misc. Mayfly	Ephemerellidae	<i>Eurylophella funeralis</i>
RBV-2020-020	24-Oct	20044	East Spring Brook	BETHLEHEM	Other	Misc. Other	Misc. Mayfly	Leptophlebiidae	<i>Neoleptophlebia sp.</i>
RBV-2020-020	24-Oct	20044	East Spring Brook	BETHLEHEM	Other	Misc. Other	Misc. Caddisfly	Limnephilidae	<i>Pycnopsyche sp.</i>
RBV-2020-020	24-Oct	20044	East Spring Brook	BETHLEHEM	Other	Misc. Other	Alderfly	Sialidae	<i>Sialis sp.</i>
RBV-2020-021	5-Nov	20501	Reservoir Brook	MIDDLETOWN	Most Sensitive	5A	Common Stonefly	Perlidae	<i>Eccoptura xanthenes</i>
RBV-2020-021	5-Nov	20501	Reservoir Brook	MIDDLETOWN	Most Sensitive	5C	Green Stonefly	Chloroperlidae	<i>Sweltsa sp.</i>
RBV-2020-021	5-Nov	20501	Reservoir Brook	MIDDLETOWN	Moderately Sensitive	10	Fingernet Caddisfly	Philopotamidae	<i>Dolophilodes sp.</i>
RBV-2020-021	5-Nov	20501	Reservoir Brook	MIDDLETOWN	Moderately Sensitive	11	Flatheaded Mayfly	Heptageniidae	<i>Maccaffertium modestum</i>
RBV-2020-021	5-Nov	20501	Reservoir Brook	MIDDLETOWN	Moderately Sensitive	12	Water Penny	Psephenidae	<i>Ectopria sp.</i>
RBV-2020-021	5-Nov	20501	Reservoir Brook	MIDDLETOWN	Moderately Sensitive	13	Dobsonfly or Fishfly	Corydalidae	<i>Nigronia serricornis</i>
RBV-2020-021	5-Nov	20501	Reservoir Brook	MIDDLETOWN	Moderately Sensitive	14A	Dragonfly	Aeshnidae	<i>Boyeria grafiana</i>

Sample ID	Date	Station	Waterbody	Town	Category	Panel	Common Name	RBV Taxa	Detailed Organism ID
RBV-2020-021	5-Nov	20501	Reservoir Brook	MIDDLETOWN	Other	23	Crane Fly	Tipulidae	<i>Tipula sp.</i>
RBV-2020-021	5-Nov	20501	Reservoir Brook	MIDDLETOWN	Other	Misc. Other	Toe Winged Beetle	Ptilodactylidae	<i>Anchytarsus bicolor</i>
RBV-2020-022	15-Oct	20503	Mount Hope River Tributary ("Iron Mine Brook")	ASHFORD	Most Sensitive	2	"Brush Legged" Mayfly	Isonychiidae	<i>Isonychia sp.</i>
RBV-2020-022	15-Oct	20503	Mount Hope River Tributary ("Iron Mine Brook")	ASHFORD	Most Sensitive	4	Roach-Like Stonefly	Peltoperlidae	<i>Tallaperla sp.</i>
RBV-2020-022	15-Oct	20503	Mount Hope River Tributary ("Iron Mine Brook")	ASHFORD	Most Sensitive	5A	Common Stonefly	Perlidae	<i>Eccoptura xanthenes</i>
RBV-2020-022	15-Oct	20503	Mount Hope River Tributary ("Iron Mine Brook")	ASHFORD	Most Sensitive	5C	Green Stonefly	Chloroperlidae	<i>Sweltsa sp.</i>
RBV-2020-022	15-Oct	20503	Mount Hope River Tributary ("Iron Mine Brook")	ASHFORD	Most Sensitive	6A	Saddle Casemaker Caddisfly	Glossosomatidae	<i>Glossosoma sp.</i>
RBV-2020-022	15-Oct	20503	Mount Hope River Tributary ("Iron Mine Brook")	ASHFORD	Most Sensitive	6A	Saddle Casemaker Caddisfly	Glossosomatidae	Glossosomatidae
RBV-2020-022	15-Oct	20503	Mount Hope River Tributary ("Iron Mine Brook")	ASHFORD	Moderately Sensitive	9	Common Net Spinner Caddisfly	Hydropsychidae	<i>Diplectrona modesta</i>
RBV-2020-022	15-Oct	20503	Mount Hope River Tributary ("Iron Mine Brook")	ASHFORD	Moderately Sensitive	10	Fingernet Caddisfly	Philopotamidae	<i>Dolophilodes sp.</i>
RBV-2020-022	15-Oct	20503	Mount Hope River Tributary ("Iron Mine Brook")	ASHFORD	Moderately Sensitive	11	Flatheaded Mayfly	Heptageniidae	<i>Epeorus sp.</i>
RBV-2020-022	15-Oct	20503	Mount Hope River Tributary ("Iron Mine Brook")	ASHFORD	Moderately Sensitive	11	Flatheaded Mayfly	Heptageniidae	<i>Maccaffertium modestum</i>
RBV-2020-022	15-Oct	20503	Mount Hope River Tributary ("Iron Mine Brook")	ASHFORD	Moderately Sensitive	11	Flatheaded Mayfly	Heptageniidae	<i>Maccaffertium sp.</i>
RBV-2020-022	15-Oct	20503	Mount Hope River Tributary ("Iron Mine Brook")	ASHFORD	Moderately Sensitive	12	Water Penny	Psephenidae	<i>Ectopria sp.</i>
RBV-2020-022	15-Oct	20503	Mount Hope River Tributary ("Iron Mine Brook")	ASHFORD	Moderately Sensitive	13	Dobsonfly or Fishfly	Corydalidae	<i>Nigronia serricornis</i>
RBV-2020-022	15-Oct	20503	Mount Hope River Tributary ("Iron Mine Brook")	ASHFORD	Least Sensitive	21	Aquatic Worm	Oligochaeta	<i>Oligochaeta</i>
RBV-2020-022	15-Oct	20503	Mount Hope River Tributary ("Iron Mine Brook")	ASHFORD	Other	23	Crane Fly	Tipulidae	<i>Hexatoma sp.</i>
RBV-2020-022	15-Oct	20503	Mount Hope River Tributary ("Iron Mine Brook")	ASHFORD	Other	23	Crane Fly	Tipulidae	<i>Tipula sp.</i>
RBV-2020-022	15-Oct	20503	Mount Hope River Tributary ("Iron Mine Brook")	ASHFORD	Other	24	Riffle Beetle	Elmidae	<i>Oulimnius sp.</i>
RBV-2020-022	15-Oct	20503	Mount Hope River Tributary ("Iron Mine Brook")	ASHFORD	Other	24	Riffle Beetle	Elmidae	<i>Stenelmis sp.</i>
RBV-2020-022	15-Oct	20503	Mount Hope River Tributary ("Iron Mine Brook")	ASHFORD	Other	Misc. Other	Misc. Mayfly	Ephemereillidae	<i>Eurylophella funeralis</i>
RBV-2020-022	15-Oct	20503	Mount Hope River Tributary ("Iron Mine Brook")	ASHFORD	Other	Misc. Other	Misc. Mayfly	Leptophlebiidae	<i>Neoleptophlebia sp.</i>
RBV-2020-023	21-Nov	20295	Bush Meadow Brook	STAFFORD	Most Sensitive	7	Free-Living Caddisfly ("Michelin Man")	Rhyacophilidae	<i>Rhyacophila fuscula</i>
RBV-2020-023	21-Nov	20295	Bush Meadow Brook	STAFFORD	Most Sensitive	5A	Common Stonefly	Perlidae	<i>Eccoptura xanthenes</i>
RBV-2020-023	21-Nov	20295	Bush Meadow Brook	STAFFORD	Most Sensitive	5A	Common Stonefly	Perlidae	<i>Paragnetina media</i>
RBV-2020-023	21-Nov	20295	Bush Meadow Brook	STAFFORD	Most Sensitive	5C	Small Winter Stonefly	Capniidae	<i>Allocapnia sp.</i>
RBV-2020-023	21-Nov	20295	Bush Meadow Brook	STAFFORD	Most Sensitive	5C	Small Winter Stonefly	Capniidae	<i>Capniidae</i>
RBV-2020-023	21-Nov	20295	Bush Meadow Brook	STAFFORD	Most Sensitive	5C	Green Stonefly	Chloroperlidae	<i>Sweltsa sp.</i>
RBV-2020-023	21-Nov	20295	Bush Meadow Brook	STAFFORD	Most Sensitive	5C	Winter Stonefly	Taeniopterygidae	Taeniopterygidae
RBV-2020-023	21-Nov	20295	Bush Meadow Brook	STAFFORD	Most Sensitive	5C	Winter Stonefly	Taeniopterygidae	<i>Taeniopteryx sp.</i>
RBV-2020-023	21-Nov	20295	Bush Meadow Brook	STAFFORD	Most Sensitive	6A	Saddle Casemaker Caddisfly	Glossosomatidae	<i>Glossosoma sp.</i>
RBV-2020-023	21-Nov	20295	Bush Meadow Brook	STAFFORD	Most Sensitive	8B	Bizarre Caddisfly ("Plant Casemaker")	Lepidostomatidae	<i>Lepidostoma sp.</i>
RBV-2020-023	21-Nov	20295	Bush Meadow Brook	STAFFORD	Moderately Sensitive	9	Common Net Spinner Caddisfly	Hydropsychidae	<i>Cheumatopsyche sp.</i>

Sample ID	Date	Station	Waterbody	Town	Category	Panel	Common Name	RBV Taxa	Detailed Organism ID
RBV-2020-023	21-Nov	20295	Bush Meadow Brook	STAFFORD	Moderately Sensitive	9	Common Net Spinner Caddisfly	Hydropsychidae	<i>Diplectrona modesta</i>
RBV-2020-023	21-Nov	20295	Bush Meadow Brook	STAFFORD	Moderately Sensitive	9	Common Net Spinner Caddisfly	Hydropsychidae	<i>Hydropsyche ventura</i>
RBV-2020-023	21-Nov	20295	Bush Meadow Brook	STAFFORD	Moderately Sensitive	10	Fingernet Caddisfly	Philopotamidae	<i>Dolophilodes sp.</i>
RBV-2020-023	21-Nov	20295	Bush Meadow Brook	STAFFORD	Moderately Sensitive	11	Flatheaded Mayfly	Heptageniidae	<i>Epeorus sp.</i>
RBV-2020-023	21-Nov	20295	Bush Meadow Brook	STAFFORD	Moderately Sensitive	11	Flatheaded Mayfly	Heptageniidae	<i>Maccaffertium sp.</i>
RBV-2020-023	21-Nov	20295	Bush Meadow Brook	STAFFORD	Moderately Sensitive	12	Water Penny	Psephenidae	<i>Psephenus herricki</i>
RBV-2020-023	21-Nov	20295	Bush Meadow Brook	STAFFORD	Moderately Sensitive	13	Dobsonfly or Fishfly	Corydalidae	<i>Nigronia serricornis</i>
RBV-2020-023	21-Nov	20295	Bush Meadow Brook	STAFFORD	Moderately Sensitive	14A	Dragonfly	Aeshnidae	<i>Boyeria vinosa</i>
RBV-2020-023	21-Nov	20295	Bush Meadow Brook	STAFFORD	Moderately Sensitive	14A	Dragonfly	Gomphidae	<i>Stylogomphus albistylus</i>
RBV-2020-023	21-Nov	20295	Bush Meadow Brook	STAFFORD	Least Sensitive	18	Non-Biting Midge	Chironomidae	Chironomidae
RBV-2020-023	21-Nov	20295	Bush Meadow Brook	STAFFORD	Least Sensitive	19	Black Fly	Simuliidae	<i>Prosimulium sp.</i>
RBV-2020-023	21-Nov	20295	Bush Meadow Brook	STAFFORD	Other	23	Crane Fly	Tipulidae	<i>Dicranota sp.</i>
RBV-2020-023	21-Nov	20295	Bush Meadow Brook	STAFFORD	Other	23	Crane Fly	Tipulidae	<i>Tipula sp.</i>
RBV-2020-023	21-Nov	20295	Bush Meadow Brook	STAFFORD	Other	Misc. Other	Misc. Mayfly	Ephemerellidae	<i>Ephemerella sp.</i>
RBV-2020-023	21-Nov	20295	Bush Meadow Brook	STAFFORD	Other	Misc. Other	Misc. Mayfly	Ephemerellidae	<i>Ephemerella subvaria</i>
RBV-2020-023	21-Nov	20295	Bush Meadow Brook	STAFFORD	Other	Misc. Other	Misc. Mayfly	Leptophlebiidae	<i>Neoleptophlebia sp.</i>
RBV-2020-024	22-Nov	20504	Mount Hope River	ASHFORD	Most Sensitive	2	"Brush Legged" Mayfly	Isonychiidae	<i>Isonychia sp.</i>
RBV-2020-024	22-Nov	20504	Mount Hope River	ASHFORD	Most Sensitive	4	Roach-Like Stonefly	Peltoperlidae	<i>Tallaperla sp.</i>
RBV-2020-024	22-Nov	20504	Mount Hope River	ASHFORD	Most Sensitive	5A	Common Stonefly	Perlidae	<i>Paragnetina media</i>
RBV-2020-024	22-Nov	20504	Mount Hope River	ASHFORD	Most Sensitive	5C	Small Winter Stonefly	Capniidae	<i>Allocapnia sp.</i>
RBV-2020-024	22-Nov	20504	Mount Hope River	ASHFORD	Most Sensitive	5C	Small Winter Stonefly	Capniidae	Capniidae
RBV-2020-024	22-Nov	20504	Mount Hope River	ASHFORD	Most Sensitive	5C	Green Stonefly	Chloroperlidae	<i>Sweltsa sp.</i>
RBV-2020-024	22-Nov	20504	Mount Hope River	ASHFORD	Most Sensitive	5C	Winter Stonefly	Taeniopterygidae	<i>Taeniopterygidae</i>
RBV-2020-024	22-Nov	20504	Mount Hope River	ASHFORD	Most Sensitive	5C	Winter Stonefly	Taeniopterygidae	<i>Taeniopteryx sp.</i>
RBV-2020-024	22-Nov	20504	Mount Hope River	ASHFORD	Most Sensitive	6B	Cornucopia Casemaker Caddisfly	Apataniidae	<i>Apatania sp.</i>
RBV-2020-024	22-Nov	20504	Mount Hope River	ASHFORD	Moderately Sensitive	10	Fingernet Caddisfly	Philopotamidae	<i>Dolophilodes sp.</i>
RBV-2020-024	22-Nov	20504	Mount Hope River	ASHFORD	Moderately Sensitive	11	Flatheaded Mayfly	Heptageniidae	<i>Maccaffertium modestum</i>
RBV-2020-024	22-Nov	20504	Mount Hope River	ASHFORD	Moderately Sensitive	11	Flatheaded Mayfly	Heptageniidae	<i>Maccaffertium sp.</i>
RBV-2020-024	22-Nov	20504	Mount Hope River	ASHFORD	Moderately Sensitive	12	Water Penny	Psephenidae	<i>Psephenus herricki</i>
RBV-2020-024	22-Nov	20504	Mount Hope River	ASHFORD	Moderately Sensitive	13	Dobsonfly or Fishfly	Corydalidae	<i>Nigronia serricornis</i>
RBV-2020-024	22-Nov	20504	Mount Hope River	ASHFORD	Moderately Sensitive	14A	Dragonfly	Aeshnidae	<i>Boyeria sp.</i>
RBV-2020-024	22-Nov	20504	Mount Hope River	ASHFORD	Least Sensitive	18	Non-Biting Midge	Chironomidae	Chironomidae
RBV-2020-024	22-Nov	20504	Mount Hope River	ASHFORD	Other	23	Crane Fly	Tipulidae	<i>Dicranota sp.</i>

Sample ID	Date	Station	Waterbody	Town	Category	Panel	Common Name	RBV Taxa	Detailed Organism ID
RBV-2020-024	22-Nov	20504	Mount Hope River	ASHFORD	Other	23	Crane Fly	Tipulidae	<i>Hexatoma sp.</i>
RBV-2020-024	22-Nov	20504	Mount Hope River	ASHFORD	Other	23	Crane Fly	Tipulidae	<i>Tipula sp.</i>
RBV-2020-024	22-Nov	20504	Mount Hope River	ASHFORD	Other	Misc. Other	Misc. Mayfly	Ephemerelellidae	<i>Eurylophella funeralis</i>
RBV-2020-024	22-Nov	20504	Mount Hope River	ASHFORD	Other	Misc. Other	Misc. Mayfly	Ephemerelellidae	<i>Eurylophella sp.</i>
RBV-2020-024	22-Nov	20504	Mount Hope River	ASHFORD	Other	Misc. Other	Misc. Caddisfly	Leptoceridae	<i>Mystacides sepulchralis</i>
RBV-2020-024	22-Nov	20504	Mount Hope River	ASHFORD	Other	Misc. Other	Misc. Mayfly	Leptophlebiidae	<i>Neoleptophlebia sp.</i>
RBV-2020-024	22-Nov	20504	Mount Hope River	ASHFORD	Other	Misc. Other	Misc. Caddisfly	Polycentropodidae	<i>Polycentropus sp.</i>
RBV-2020-025	8-Nov	17423	Still River	EASTFORD	Most Sensitive	2	"Brush Legged" Mayfly	Isonychiidae	<i>Isonychia sp.</i>
RBV-2020-025	8-Nov	17423	Still River	EASTFORD	Most Sensitive	7	Free-Living Caddisfly ("Michelin Man")	Rhyacophilidae	<i>Rhyacophila manistee</i>
RBV-2020-025	8-Nov	17423	Still River	EASTFORD	Most Sensitive	5A	Common Stonefly	Perlidae	<i>Acroneuria abnormis</i>
RBV-2020-025	8-Nov	17423	Still River	EASTFORD	Most Sensitive	5A	Common Stonefly	Perlidae	<i>Paragnetina media</i>
RBV-2020-025	8-Nov	17423	Still River	EASTFORD	Most Sensitive	5C	Winter Stonefly	Taeniopterygidae	<i>Taeniopteryx sp.</i>
RBV-2020-025	8-Nov	17423	Still River	EASTFORD	Most Sensitive	6A	Saddle Casemaker Caddisfly	Glossosomatidae	<i>Glossosoma sp.</i>
RBV-2020-025	8-Nov	17423	Still River	EASTFORD	Moderately Sensitive	9	Common Net Spinner Caddisfly	Hydropsychidae	<i>Cheumatopsyche sp.</i>
RBV-2020-025	8-Nov	17423	Still River	EASTFORD	Moderately Sensitive	10	Fingernet Caddisfly	Philopotamidae	<i>Chimarra aterrima</i>
RBV-2020-025	8-Nov	17423	Still River	EASTFORD	Moderately Sensitive	11	Flatheaded Mayfly	Heptageniidae	<i>Epeorus sp.</i>
RBV-2020-025	8-Nov	17423	Still River	EASTFORD	Moderately Sensitive	11	Flatheaded Mayfly	Heptageniidae	<i>Leucrocota sp.</i>
RBV-2020-025	8-Nov	17423	Still River	EASTFORD	Moderately Sensitive	11	Flatheaded Mayfly	Heptageniidae	<i>Maccaffertium vicarium</i>
RBV-2020-025	8-Nov	17423	Still River	EASTFORD	Moderately Sensitive	12	Water Penny	Psephenidae	<i>Psephenus herricki</i>
RBV-2020-025	8-Nov	17423	Still River	EASTFORD	Moderately Sensitive	13	Dobsonfly or Fishfly	Corydalidae	<i>Corydalus cornutus</i>
RBV-2020-025	8-Nov	17423	Still River	EASTFORD	Moderately Sensitive	14A	Dragonfly	Aeshnidae	<i>Boyeria vinosa</i>
RBV-2020-025	8-Nov	17423	Still River	EASTFORD	Moderately Sensitive	14A	Dragonfly	Gomphidae	Gomphidae
RBV-2020-025	8-Nov	17423	Still River	EASTFORD	Moderately Sensitive	14B	Damselfly	Coenagrionidae	<i>Argia sp.</i>
RBV-2020-025	8-Nov	17423	Still River	EASTFORD	Least Sensitive	18	Non-Biting Midge	Chironomidae	Chironomidae
RBV-2020-025	8-Nov	17423	Still River	EASTFORD	Least Sensitive	18	Non-Biting Midge	Chironomidae	Chironomidae
RBV-2020-025	8-Nov	17423	Still River	EASTFORD	Least Sensitive	21	Aquatic Worm	Oligochaeta	Oligochaeta
RBV-2020-025	8-Nov	17423	Still River	EASTFORD	Other	23	Crane Fly	Tipulidae	<i>Hexatoma sp.</i>
RBV-2020-025	8-Nov	17423	Still River	EASTFORD	Other	23	Crane Fly	Tipulidae	<i>Tipula sp.</i>
RBV-2020-025	8-Nov	17423	Still River	EASTFORD	Other	24	Riffle Beetle	Elmidae	<i>Optioservus trivittatus</i>
RBV-2020-025	8-Nov	17423	Still River	EASTFORD	Other	24	Riffle Beetle	Elmidae	<i>Oulimnius sp.</i>
RBV-2020-025	8-Nov	17423	Still River	EASTFORD	Other	25	Small Minnow Mayfly	Baetidae	<i>Acerpenna pygmaea</i>
RBV-2020-025	8-Nov	17423	Still River	EASTFORD	Other	26	Aquatic Snipe Fly	Athericidae	<i>Atherix sp.</i>
RBV-2020-025	8-Nov	17423	Still River	EASTFORD	Other	Misc. Other	Misc. Mayfly	Ephemerelellidae	<i>Ephemerella sp.</i>

Sample ID	Date	Station	Waterbody	Town	Category	Panel	Common Name	RBV Taxa	Detailed Organism ID
RBV-2020-025	8-Nov	17423	Still River	EASTFORD	Other	Misc. Other	Misc. Mayfly	Ephemereillidae	<i>Eurylophella sp.</i>
RBV-2020-025	8-Nov	17423	Still River	EASTFORD	Other	Misc. Other	Misc. Caddisfly	Odontoceridae	<i>Psilotreta sp.</i>
RBV-2020-026	10-Nov	20505	Bungee Brook	EASTFORD	Most Sensitive	2	"Brush Legged" Mayfly	Isonychiidae	<i>Isonychia sp.</i>
RBV-2020-026	10-Nov	20505	Bungee Brook	EASTFORD	Most Sensitive	4	Roach-Like Stonefly	Peltoperlidae	<i>Tallaperla sp.</i>
RBV-2020-026	10-Nov	20505	Bungee Brook	EASTFORD	Most Sensitive	7	Free-Living Caddisfly ("Michelin Man")	Rhyacophilidae	<i>Rhyacophila sp.</i>
RBV-2020-026	10-Nov	20505	Bungee Brook	EASTFORD	Most Sensitive	5A	Common Stonefly	Perlidae	<i>Paragnetina media</i>
RBV-2020-026	10-Nov	20505	Bungee Brook	EASTFORD	Most Sensitive	5C	Small Winter Stonefly	Capniidae	Capniidae
RBV-2020-026	10-Nov	20505	Bungee Brook	EASTFORD	Most Sensitive	5C	Winter Stonefly	Taeniopterygidae	<i>Taeniopteryx sp.</i>
RBV-2020-026	10-Nov	20505	Bungee Brook	EASTFORD	Moderately Sensitive	9	Common Net Spinner Caddisfly	Hydropsychidae	<i>Cheumatopsyche sp.</i>
RBV-2020-026	10-Nov	20505	Bungee Brook	EASTFORD	Moderately Sensitive	9	Common Net Spinner Caddisfly	Hydropsychidae	<i>Hydropsyche betteni</i>
RBV-2020-026	10-Nov	20505	Bungee Brook	EASTFORD	Moderately Sensitive	9	Common Net Spinner Caddisfly	Hydropsychidae	<i>Hydropsyche sparna</i>
RBV-2020-026	10-Nov	20505	Bungee Brook	EASTFORD	Moderately Sensitive	10	Fingernet Caddisfly	Philopotamidae	<i>Chimarra aterrima</i>
RBV-2020-026	10-Nov	20505	Bungee Brook	EASTFORD	Moderately Sensitive	11	Flatheaded Mayfly	Heptageniidae	<i>Maccaffertium modestum</i>
RBV-2020-026	10-Nov	20505	Bungee Brook	EASTFORD	Moderately Sensitive	11	Flatheaded Mayfly	Heptageniidae	<i>Stenacron interpunctatum</i>
RBV-2020-026	10-Nov	20505	Bungee Brook	EASTFORD	Moderately Sensitive	12	Water Penny	Psephenidae	<i>Psephenus herricki</i>
RBV-2020-026	10-Nov	20505	Bungee Brook	EASTFORD	Moderately Sensitive	13	Dobsonfly or Fishfly	Corydalidae	<i>Corydalus cornutus</i>
RBV-2020-026	10-Nov	20505	Bungee Brook	EASTFORD	Least Sensitive	18	Non-Biting Midge	Chironomidae	<i>Chironomidae</i>
RBV-2020-026	10-Nov	20505	Bungee Brook	EASTFORD	Least Sensitive	19	Black Fly	Simuliidae	<i>Prosimulium sp.</i>
RBV-2020-026	10-Nov	20505	Bungee Brook	EASTFORD	Other	23	Crane Fly	Tipulidae	<i>Antocha sp.</i>
RBV-2020-026	10-Nov	20505	Bungee Brook	EASTFORD	Other	23	Crane Fly	Tipulidae	<i>Tipula sp.</i>
RBV-2020-026	10-Nov	20505	Bungee Brook	EASTFORD	Other	24	Rifle Beetle	Elmidae	<i>Optioservus trivittatus</i>
RBV-2020-026	10-Nov	20505	Bungee Brook	EASTFORD	Other	25	Small Minnow Mayfly	Baetidae	<i>Acerpenna macdunnoughi</i>
RBV-2020-026	10-Nov	20505	Bungee Brook	EASTFORD	Other	26	Aquatic Snipe Fly	Athericidae	<i>Atherix sp.</i>
RBV-2020-026	10-Nov	20505	Bungee Brook	EASTFORD	Other	Misc. Other	Misc. Mayfly	Ephemeraidae	<i>Ephemera sp.</i>
RBV-2020-026	10-Nov	20505	Bungee Brook	EASTFORD	Other	Misc. Other	Misc. Caddisfly	Limnephilidae	<i>Pycnopsyche sp.</i>
RBV-2020-027	4-May	15313	Harris Brook	SALEM	Most Sensitive	2	"Brush Legged" Mayfly	Isonychiidae	<i>Isonychia sp.</i>
RBV-2020-027	4-May	15313	Harris Brook	SALEM	Most Sensitive	7	Free-Living Caddisfly ("Michelin Man")	Rhyacophilidae	<i>Rhyacophila carolina</i>
RBV-2020-027	4-May	15313	Harris Brook	SALEM	Most Sensitive	7	Free-Living Caddisfly ("Michelin Man")	Rhyacophilidae	<i>Rhyacophila fuscula</i>
RBV-2020-027	4-May	15313	Harris Brook	SALEM	Most Sensitive	5A	Common Stonefly	Perlidae	<i>Acroneuria abnormis</i>
RBV-2020-027	4-May	15313	Harris Brook	SALEM	Most Sensitive	5A	Common Stonefly	Perlidae	<i>Paragnetina media</i>
RBV-2020-027	4-May	15313	Harris Brook	SALEM	Moderately Sensitive	9	Common Net Spinner Caddisfly	Hydropsychidae	<i>Hydropsyche betteni</i>
RBV-2020-027	4-May	15313	Harris Brook	SALEM	Moderately Sensitive	9	Common Net Spinner Caddisfly	Hydropsychidae	<i>Hydropsyche sparna</i>
RBV-2020-027	4-May	15313	Harris Brook	SALEM	Moderately Sensitive	10	Fingernet Caddisfly	Philopotamidae	<i>Chimarra aterrima</i>

Sample ID	Date	Station	Waterbody	Town	Category	Panel	Common Name	RBV Taxa	Detailed Organism ID
RBV-2020-027	4-May	15313	Harris Brook	SALEM	Moderately Sensitive	10	Fingernet Caddisfly	Philopotamidae	<i>Wormaldia sp.</i>
RBV-2020-027	4-May	15313	Harris Brook	SALEM	Moderately Sensitive	11	Flatheaded Mayfly	Heptageniidae	<i>Maccaffertium modestum</i>
RBV-2020-027	4-May	15313	Harris Brook	SALEM	Moderately Sensitive	13	Dobsonfly or Fishfly	Corydalidae	<i>Corydalus cornutus</i>
RBV-2020-027	4-May	15313	Harris Brook	SALEM	Moderately Sensitive	13	Dobsonfly or Fishfly	Corydalidae	<i>Nigronia serricornis</i>
RBV-2020-027	4-May	15313	Harris Brook	SALEM	Moderately Sensitive	14A	Dragonfly	Gomphidae	<i>Ophiogomphus mainensis</i>
RBV-2020-027	4-May	15313	Harris Brook	SALEM	Moderately Sensitive	14A	Dragonfly	Gomphidae	<i>Ophiogomphus sp.</i>
RBV-2020-027	4-May	15313	Harris Brook	SALEM	Least Sensitive	18	Non-Biting Midge	Chironomidae	Chironomidae
RBV-2020-027	4-May	15313	Harris Brook	SALEM	Least Sensitive	19	Black Fly	Simuliidae	<i>Simulium sp.</i>
RBV-2020-027	4-May	15313	Harris Brook	SALEM	Other	23	Crane Fly	Tipulidae	<i>Tipula sp.</i>
RBV-2020-027	4-May	15313	Harris Brook	SALEM	Other	Misc. Other	Misc. Mayfly	Ephemerellidae	<i>Drunella sp.</i>
RBV-2020-027	4-May	15313	Harris Brook	SALEM	Other	Misc. Other	Misc. Mayfly	Ephemerellidae	<i>Ephemerella invaria</i>
RBV-2020-027	4-May	15313	Harris Brook	SALEM	Other	Misc. Other	Misc. Mayfly	Ephemerellidae	<i>Penalomax septentrionalis</i>
RBV-2020-028	4-May	20492	Burnham Brook	EAST HADDAM	Most Sensitive	4	Roach-Like Stonefly	Peltoperlidae	<i>Tallaperla sp.</i>
RBV-2020-028	4-May	20492	Burnham Brook	EAST HADDAM	Most Sensitive	7	Free-Living Caddisfly ("Michelin Man")	Rhyacophilidae	<i>Rhyacophila fuscula</i>
RBV-2020-028	4-May	20492	Burnham Brook	EAST HADDAM	Most Sensitive	5A	Common Stonefly	Perlidae	<i>Acroneuria abnormis</i>
RBV-2020-028	4-May	20492	Burnham Brook	EAST HADDAM	Most Sensitive	5A	Common Stonefly	Perlidae	<i>Eccoptyura xanthenes</i>
RBV-2020-028	4-May	20492	Burnham Brook	EAST HADDAM	Most Sensitive	5C	Spring Stonefly	Nemouridae	<i>Amphinemura sp.</i>
RBV-2020-028	4-May	20492	Burnham Brook	EAST HADDAM	Most Sensitive	5C	Perlodid Stonefly	Perlodidae	<i>Isoperla sp.</i>
RBV-2020-028	4-May	20492	Burnham Brook	EAST HADDAM	Most Sensitive	5C	Perlodid Stonefly	Perlodidae	<i>Remenus sp.</i>
RBV-2020-028	4-May	20492	Burnham Brook	EAST HADDAM	Moderately Sensitive	9	Common Net Spinner Caddisfly	Hydropsychidae	<i>Diplectrona modesta</i>
RBV-2020-028	4-May	20492	Burnham Brook	EAST HADDAM	Moderately Sensitive	11	Flatheaded Mayfly	Heptageniidae	<i>Maccaffertium modestum</i>
RBV-2020-028	4-May	20492	Burnham Brook	EAST HADDAM	Moderately Sensitive	13	Dobsonfly or Fishfly	Corydalidae	<i>Nigronia serricornis</i>
RBV-2020-028	4-May	20492	Burnham Brook	EAST HADDAM	Moderately Sensitive	14A	Dragonfly	Aeshnidae	<i>Boyeria vinosa</i>
RBV-2020-028	4-May	20492	Burnham Brook	EAST HADDAM	Other	23	Crane Fly	Tipulidae	<i>Tipula sp.</i>
RBV-2020-028	4-May	20492	Burnham Brook	EAST HADDAM	Other	Misc. Other	Misc. Mayfly	Ephemerellidae	<i>Ephemerella dorothea/excrucians</i>
RBV-2020-028	4-May	20492	Burnham Brook	EAST HADDAM	Other	Misc. Other	Misc. Caddisfly	Limnephilidae	<i>Pycnopsyche sp.</i>
RBV-2020-029	4-May	16123	Muddy Brook	EAST HADDAM	Most Sensitive	4	Roach-Like Stonefly	Peltoperlidae	<i>Tallaperla sp.</i>
RBV-2020-029	4-May	16123	Muddy Brook	EAST HADDAM	Most Sensitive	7	Free-Living Caddisfly ("Michelin Man")	Rhyacophilidae	<i>Rhyacophila carolina</i>
RBV-2020-029	4-May	16123	Muddy Brook	EAST HADDAM	Most Sensitive	5A	Common Stonefly	Perlidae	<i>Acroneuria abnormis</i>
RBV-2020-029	4-May	16123	Muddy Brook	EAST HADDAM	Most Sensitive	5A	Common Stonefly	Perlidae	<i>Acroneuria carolinensis</i>
RBV-2020-029	4-May	16123	Muddy Brook	EAST HADDAM	Most Sensitive	5A	Common Stonefly	Perlidae	<i>Eccoptyura xanthenes</i>
RBV-2020-029	4-May	16123	Muddy Brook	EAST HADDAM	Most Sensitive	5C	Green Stonefly	Chloroperlidae	<i>Sweltsa sp.</i>
RBV-2020-029	4-May	16123	Muddy Brook	EAST HADDAM	Most Sensitive	6A	Saddle Casemaker Caddisfly	Glossosomatidae	Glossosomatidae

Sample ID	Date	Station	Waterbody	Town	Category	Panel	Common Name	RBV Taxa	Detailed Organism ID
RBV-2020-029	4-May	16123	Muddy Brook	EAST HADDAM	Moderately Sensitive	9	Common Net Spinner Caddisfly	Hydropsychidae	<i>Diplectrona modesta</i>
RBV-2020-029	4-May	16123	Muddy Brook	EAST HADDAM	Moderately Sensitive	9	Common Net Spinner Caddisfly	Hydropsychidae	<i>Hydropsyche sparna</i>
RBV-2020-029	4-May	16123	Muddy Brook	EAST HADDAM	Moderately Sensitive	10	Fingernet Caddisfly	Philopotamidae	<i>Dolophilodes sp.</i>
RBV-2020-029	4-May	16123	Muddy Brook	EAST HADDAM	Moderately Sensitive	11	Flatheaded Mayfly	Heptageniidae	<i>Epeorus sp.</i>
RBV-2020-029	4-May	16123	Muddy Brook	EAST HADDAM	Moderately Sensitive	12	Water Penny	Psephenidae	<i>Psephenus herricki</i>
RBV-2020-029	4-May	16123	Muddy Brook	EAST HADDAM	Moderately Sensitive	13	Dobsonfly or Fishfly	Corydalidae	<i>Nigronia serricornis</i>
RBV-2020-029	4-May	16123	Muddy Brook	EAST HADDAM	Least Sensitive	21	Aquatic Worm	Oligochaeta	Lumbricina
RBV-2020-029	4-May	16123	Muddy Brook	EAST HADDAM	Other	23	Crane Fly	Tipulidae	<i>Tipula sp.</i>
RBV-2020-030	4-May	19214	Harris Brook	SALEM	Most Sensitive	2	"Brush Legged" Mayfly	Isonychiidae	<i>Isonychia sp.</i>
RBV-2020-030	4-May	19214	Harris Brook	SALEM	Most Sensitive	7	Free-Living Caddisfly ("Michelin Man")	Rhyacophilidae	<i>Rhyacophila fuscula</i>
RBV-2020-030	4-May	19214	Harris Brook	SALEM	Most Sensitive	5A	Common Stonefly	Perlidae	<i>Paragnetina media</i>
RBV-2020-030	4-May	19214	Harris Brook	SALEM	Most Sensitive	5C	Perلودid Stonefly	Perlodidae	<i>Isoperla sp.</i>
RBV-2020-030	4-May	19214	Harris Brook	SALEM	Moderately Sensitive	9	Common Net Spinner Caddisfly	Hydropsychidae	<i>Hydropsyche betteni</i>
RBV-2020-030	4-May	19214	Harris Brook	SALEM	Moderately Sensitive	11	Flatheaded Mayfly	Heptageniidae	<i>Maccaffertium modestum</i>
RBV-2020-030	4-May	19214	Harris Brook	SALEM	Moderately Sensitive	11	Flatheaded Mayfly	Heptageniidae	<i>Maccaffertium sp.</i>
RBV-2020-030	4-May	19214	Harris Brook	SALEM	Moderately Sensitive	12	Water Penny	Psephenidae	<i>Psephenus herricki</i>
RBV-2020-030	4-May	19214	Harris Brook	SALEM	Moderately Sensitive	13	Dobsonfly or Fishfly	Corydalidae	<i>Nigronia serricornis</i>
RBV-2020-030	4-May	19214	Harris Brook	SALEM	Moderately Sensitive	14A	Dragonfly	Aeshnidae	<i>Boyeria sp.</i>
RBV-2020-030	4-May	19214	Harris Brook	SALEM	Least Sensitive	19	Black Fly	Simuliidae	<i>Simulium sp.</i>
RBV-2020-030	4-May	19214	Harris Brook	SALEM	Least Sensitive	21	Aquatic Worm	Oligochaeta	Oligochaeta
RBV-2020-030	4-May	19214	Harris Brook	SALEM	Other	Misc. Other	Misc. Mayfly	EphemereUidae	<i>Ephemerella dorothea/excrucians</i>
RBV-2020-031	6-Nov	18518	Eightmile River	EAST HADDAM	Most Sensitive	2	"Brush Legged" Mayfly	Isonychiidae	<i>Isonychia sp.</i>
RBV-2020-031	6-Nov	18518	Eightmile River	EAST HADDAM	Most Sensitive	4	Roach-Like Stonefly	Peltoperlidae	<i>Tallaperla sp.</i>
RBV-2020-031	6-Nov	18518	Eightmile River	EAST HADDAM	Most Sensitive	5A	Common Stonefly	Perlidae	<i>Acroneuria abnormis</i>
RBV-2020-031	6-Nov	18518	Eightmile River	EAST HADDAM	Most Sensitive	8B	Bizarre Caddisfly ("Plant Casemaker")	Lepidostomatidae	<i>Lepidostoma sp.</i>
RBV-2020-031	6-Nov	18518	Eightmile River	EAST HADDAM	Moderately Sensitive	9	Common Net Spinner Caddisfly	Hydropsychidae	<i>Hydropsyche betteni</i>
RBV-2020-031	6-Nov	18518	Eightmile River	EAST HADDAM	Moderately Sensitive	10	Fingernet Caddisfly	Philopotamidae	<i>Chimarra aterrima</i>
RBV-2020-031	6-Nov	18518	Eightmile River	EAST HADDAM	Moderately Sensitive	11	Flatheaded Mayfly	Heptageniidae	<i>Maccaffertium modestum</i>
RBV-2020-031	6-Nov	18518	Eightmile River	EAST HADDAM	Moderately Sensitive	11	Flatheaded Mayfly	Heptageniidae	<i>Maccaffertium vicarium</i>
RBV-2020-031	6-Nov	18518	Eightmile River	EAST HADDAM	Moderately Sensitive	12	Water Penny	Psephenidae	<i>Psephenus herricki</i>
RBV-2020-031	6-Nov	18518	Eightmile River	EAST HADDAM	Moderately Sensitive	13	Dobsonfly or Fishfly	Corydalidae	<i>Corydalis cornutus</i>
RBV-2020-031	6-Nov	18518	Eightmile River	EAST HADDAM	Moderately Sensitive	13	Dobsonfly or Fishfly	Corydalidae	<i>Nigronia serricornis</i>
RBV-2020-031	6-Nov	18518	Eightmile River	EAST HADDAM	Other	26	Aquatic Snipe Fly	Athericidae	<i>Atherix sp.</i>

Sample ID	Date	Station	Waterbody	Town	Category	Panel	Common Name	RBV Taxa	Detailed Organism ID
RBV-2020-031	6-Nov	18518	Eightmile River	EAST HADDAM	Other	Misc. Other	Misc. Mayfly	Leptophlebiidae	<i>Neoleptophlebia sp.</i>
RBV-2020-032	24-Oct	19214	Harris Brook	SALEM	Most Sensitive	2	"Brush Legged" Mayfly	Isonychiidae	<i>Isonychia sp.</i>
RBV-2020-032	24-Oct	19214	Harris Brook	SALEM	Most Sensitive	5A	Common Stonefly	Perlidae	<i>Paragnetina media</i>
RBV-2020-032	24-Oct	19214	Harris Brook	SALEM	Moderately Sensitive	9	Common Net Spinner Caddisfly	Hydropsychidae	<i>Hydropsyche betteni</i>
RBV-2020-032	24-Oct	19214	Harris Brook	SALEM	Moderately Sensitive	10	Fingernet Caddisfly	Philopotamidae	<i>Chimarra aterrima</i>
RBV-2020-032	24-Oct	19214	Harris Brook	SALEM	Moderately Sensitive	10	Fingernet Caddisfly	Philopotamidae	<i>Dolophilodes sp.</i>
RBV-2020-032	24-Oct	19214	Harris Brook	SALEM	Moderately Sensitive	11	Flatheaded Mayfly	Heptageniidae	<i>Maccaffertium modestum</i>
RBV-2020-032	24-Oct	19214	Harris Brook	SALEM	Moderately Sensitive	13	Dobsonfly or Fishfly	Corydalidae	<i>Nigronia serricornis</i>
RBV-2020-032	24-Oct	19214	Harris Brook	SALEM	Moderately Sensitive	14A	Dragonfly	Aeshnidae	<i>Boyeria vinosa</i>
RBV-2020-032	24-Oct	19214	Harris Brook	SALEM	Moderately Sensitive	14B	Damselfly	Calopterygidae	<i>Calopteryx sp.</i>
RBV-2020-032	24-Oct	19214	Harris Brook	SALEM	Other	Misc. Other	Misc. Mayfly	Ephemereillidae	<i>Ephemerella sp.</i>
RBV-2020-032	24-Oct	19214	Harris Brook	SALEM	Other	Misc. Other	Misc. Caddisfly	Leptoceridae	<i>Oecetis persimilis</i>
RBV-2020-033	24-Oct	19458	Roaring Brook #2	LYME	Most Sensitive	2	"Brush Legged" Mayfly	Isonychiidae	<i>Isonychia sp.</i>
RBV-2020-033	24-Oct	19458	Roaring Brook #2	LYME	Most Sensitive	5A	Common Stonefly	Perlidae	<i>Acroneuria abnormis</i>
RBV-2020-033	24-Oct	19458	Roaring Brook #2	LYME	Most Sensitive	5A	Common Stonefly	Perlidae	<i>Acroneuria sp.</i>
RBV-2020-033	24-Oct	19458	Roaring Brook #2	LYME	Most Sensitive	5C	Winter Stonefly	Taeniopterygidae	<i>Taeniopteryx sp.</i>
RBV-2020-033	24-Oct	19458	Roaring Brook #2	LYME	Most Sensitive	8B	Bizarre Caddisfly ("Plant Casemaker")	Lepidostomatidae	<i>Lepidostoma sp.</i>
RBV-2020-033	24-Oct	19458	Roaring Brook #2	LYME	Moderately Sensitive	9	Common Net Spinner Caddisfly	Hydropsychidae	<i>Hydropsyche betteni</i>
RBV-2020-033	24-Oct	19458	Roaring Brook #2	LYME	Moderately Sensitive	10	Fingernet Caddisfly	Philopotamidae	<i>Chimarra aterrima</i>
RBV-2020-033	24-Oct	19458	Roaring Brook #2	LYME	Moderately Sensitive	10	Fingernet Caddisfly	Philopotamidae	<i>Dolophilodes sp.</i>
RBV-2020-033	24-Oct	19458	Roaring Brook #2	LYME	Moderately Sensitive	12	Water Penny	Psephenidae	<i>Psephenus herricki</i>
RBV-2020-033	24-Oct	19458	Roaring Brook #2	LYME	Moderately Sensitive	13	Dobsonfly or Fishfly	Corydalidae	<i>Nigronia serricornis</i>
RBV-2020-033	24-Oct	19458	Roaring Brook #2	LYME	Moderately Sensitive	14A	Dragonfly	Gomphidae	<i>Ophiogomphus mainensis</i>
RBV-2020-033	24-Oct	19458	Roaring Brook #2	LYME	Moderately Sensitive	14A	Dragonfly	Gomphidae	<i>Ophiogomphus sp.</i>
RBV-2020-033	24-Oct	19458	Roaring Brook #2	LYME	Least Sensitive	18	Non-Biting Midge	Chironomidae	<i>Chironomidae</i>
RBV-2020-033	24-Oct	19458	Roaring Brook #2	LYME	Other	21	Aquatic Worm (Horsehair Worm)	Nematomorpha	<i>Nematomorpha</i>
RBV-2020-033	24-Oct	19458	Roaring Brook #2	LYME	Other	23	Crane Fly	Tipulidae	<i>Hexatoma sp.</i>
RBV-2020-033	24-Oct	19458	Roaring Brook #2	LYME	Other	23	Crane Fly	Tipulidae	<i>Tipula sp.</i>
RBV-2020-033	24-Oct	19458	Roaring Brook #2	LYME	Other	24	Riffle Beetle	Elmidae	<i>Promoresia tardella</i>
RBV-2020-033	24-Oct	19458	Roaring Brook #2	LYME	Other	24	Riffle Beetle	Elmidae	<i>Promoresia tardella</i>
RBV-2020-033	24-Oct	19458	Roaring Brook #2	LYME	Other	26	Aquatic Snipe Fly	Athericidae	<i>Atherix sp.</i>
RBV-2020-033	24-Oct	19458	Roaring Brook #2	LYME	Other	Misc. Other	Misc. Caddisfly	Brachycentridae	<i>Brachycentrus appalachia</i>
RBV-2020-033	24-Oct	19458	Roaring Brook #2	LYME	Other	Misc. Other	Misc. Mayfly	Ephemereillidae	<i>Ephemerella sp.</i>

Sample ID	Date	Station	Waterbody	Town	Category	Panel	Common Name	RBV Taxa	Detailed Organism ID
RBV-2020-033	24-Oct	19458	Roaring Brook #2	LYME	Other	Misc. Other	Misc. Mayfly	Leptophlebiidae	<i>Neoleptophlebia sp.</i>
RBV-2020-034	6-Nov	19215	East Branch Eightmile River Tributary ("Ransom Brook")	SALEM	Most Sensitive	4	Roach-Like Stonefly	Peltoperlidae	<i>Tallaperla sp.</i>
RBV-2020-034	6-Nov	19215	East Branch Eightmile River Tributary ("Ransom Brook")	SALEM	Most Sensitive	7	Free-Living Caddisfly ("Michelin Man")	Rhyacophilidae	<i>Rhyacophila manistee</i>
RBV-2020-034	6-Nov	19215	East Branch Eightmile River Tributary ("Ransom Brook")	SALEM	Most Sensitive	5A	Common Stonefly	Perlidae	<i>Eccoptura xanthenes</i>
RBV-2020-034	6-Nov	19215	East Branch Eightmile River Tributary ("Ransom Brook")	SALEM	Most Sensitive	5A	Common Stonefly	Perlidae	<i>Paragnetina media</i>
RBV-2020-034	6-Nov	19215	East Branch Eightmile River Tributary ("Ransom Brook")	SALEM	Most Sensitive	5C	Winter Stonefly	Taeniopterygidae	<i>Taeniopteryx sp.</i>
RBV-2020-034	6-Nov	19215	East Branch Eightmile River Tributary ("Ransom Brook")	SALEM	Most Sensitive	8B	Bizarre Caddisfly ("Plant Casemaker")	Lepidostomatidae	<i>Lepidostoma sp.</i>
RBV-2020-034	6-Nov	19215	East Branch Eightmile River Tributary ("Ransom Brook")	SALEM	Moderately Sensitive	9	Common Net Spinner Caddisfly	Hydropsychidae	<i>Hydropsyche betteni</i>
RBV-2020-034	6-Nov	19215	East Branch Eightmile River Tributary ("Ransom Brook")	SALEM	Moderately Sensitive	10	Fingernet Caddisfly	Philopotamidae	<i>Chimarra aterrima</i>
RBV-2020-034	6-Nov	19215	East Branch Eightmile River Tributary ("Ransom Brook")	SALEM	Moderately Sensitive	11	Flatheaded Mayfly	Heptageniidae	<i>Maccaffertium modestum</i>
RBV-2020-034	6-Nov	19215	East Branch Eightmile River Tributary ("Ransom Brook")	SALEM	Moderately Sensitive	11	Flatheaded Mayfly	Heptageniidae	<i>Maccaffertium sp.</i>
RBV-2020-034	6-Nov	19215	East Branch Eightmile River Tributary ("Ransom Brook")	SALEM	Moderately Sensitive	12	Water Penny	Psephenidae	<i>Psephenus herricki</i>
RBV-2020-034	6-Nov	19215	East Branch Eightmile River Tributary ("Ransom Brook")	SALEM	Moderately Sensitive	13	Dobsonfly or Fishfly	Corydalidae	<i>Nigronia serricornis</i>
RBV-2020-034	6-Nov	19215	East Branch Eightmile River Tributary ("Ransom Brook")	SALEM	Moderately Sensitive	14A	Dragonfly	Aeshnidae	<i>Boyeria vinosa</i>
RBV-2020-034	6-Nov	19215	East Branch Eightmile River Tributary ("Ransom Brook")	SALEM	Moderately Sensitive	14B	Damselfly	Calopterygidae	<i>Calopteryx sp.</i>
RBV-2020-034	6-Nov	19215	East Branch Eightmile River Tributary ("Ransom Brook")	SALEM	Other	23	Crane Fly	Tipulidae	<i>Hexatoma sp.</i>
RBV-2020-034	6-Nov	19215	East Branch Eightmile River Tributary ("Ransom Brook")	SALEM	Other	23	Crane Fly	Tipulidae	<i>Tipula sp.</i>
RBV-2020-034	6-Nov	19215	East Branch Eightmile River Tributary ("Ransom Brook")	SALEM	Other	Misc. Other	Toe Winged Beetle	Ptilodactylidae	<i>Anchytarsus bicolor</i>
RBV-2020-034	6-Nov	19215	East Branch Eightmile River Tributary ("Ransom Brook")	SALEM	Other	Misc. Other	Misc. Caddisfly	Brachycentridae	<i>Brachycentrus numerosus</i>
RBV-2020-034	6-Nov	19215	East Branch Eightmile River Tributary ("Ransom Brook")	SALEM	Other	Misc. Other	Misc. Mayfly	Leptophlebiidae	<i>Neoleptophlebia sp.</i>
RBV-2020-035	6-Nov	16123	Muddy Brook	EAST HADDAM	Most Sensitive	5A	Common Stonefly	Perlidae	<i>Acroneuria abnormis</i>
RBV-2020-035	6-Nov	16123	Muddy Brook	EAST HADDAM	Most Sensitive	6A	Saddle Casemaker Caddisfly	Glossosomatidae	Glossosomatidae
RBV-2020-035	6-Nov	16123	Muddy Brook	EAST HADDAM	Moderately Sensitive	9	Common Net Spinner Caddisfly	Hydropsychidae	<i>Hydropsyche betteni</i>
RBV-2020-035	6-Nov	16123	Muddy Brook	EAST HADDAM	Moderately Sensitive	11	Flatheaded Mayfly	Heptageniidae	<i>Maccaffertium modestum</i>
RBV-2020-035	6-Nov	16123	Muddy Brook	EAST HADDAM	Moderately Sensitive	11	Flatheaded Mayfly	Heptageniidae	<i>Maccaffertium vicarium</i>
RBV-2020-035	6-Nov	16123	Muddy Brook	EAST HADDAM	Moderately Sensitive	12	Water Penny	Psephenidae	<i>Psephenus herricki</i>
RBV-2020-035	6-Nov	16123	Muddy Brook	EAST HADDAM	Moderately Sensitive	13	Dobsonfly or Fishfly	Corydalidae	<i>Nigronia serricornis</i>
RBV-2020-035	6-Nov	16123	Muddy Brook	EAST HADDAM	Moderately Sensitive	14A	Dragonfly	Aeshnidae	<i>Boyeria vinosa</i>
RBV-2020-035	6-Nov	16123	Muddy Brook	EAST HADDAM	Moderately Sensitive	14A	Dragonfly	Cordulegastridae	<i>Cordulegaster sp.</i>
RBV-2020-035	6-Nov	16123	Muddy Brook	EAST HADDAM	Least Sensitive	21	Aquatic Worm	Oligochaeta	Oligochaeta
RBV-2020-035	6-Nov	16123	Muddy Brook	EAST HADDAM	Other	23	Crane Fly	Tipulidae	<i>Tipula sp.</i>
RBV-2020-035	6-Nov	16123	Muddy Brook	EAST HADDAM	Other	Misc. Other	Misc. Mayfly	Ephemereillidae	<i>Ephemerella sp.</i>
RBV-2020-035	6-Nov	16123	Muddy Brook	EAST HADDAM	Other	Misc. Other	Misc. Caddisfly	Odontoceridae	<i>Psilotreta sp.</i>

Sample ID	Date	Station	Waterbody	Town	Category	Panel	Common Name	RBV Taxa	Detailed Organism ID
RBV-2020-036	6-Nov	15313	Harris Brook	SALEM	Most Sensitive	2	"Brush Legged" Mayfly	Isonychiidae	<i>Isonychia sp.</i>
RBV-2020-036	6-Nov	15313	Harris Brook	SALEM	Most Sensitive	7	Free-Living Caddisfly ("Michelin Man")	Rhyacophilidae	<i>Rhyacophila sp.</i>
RBV-2020-036	6-Nov	15313	Harris Brook	SALEM	Most Sensitive	5A	Common Stonefly	Perlidae	<i>Acroneuria abnormis</i>
RBV-2020-036	6-Nov	15313	Harris Brook	SALEM	Most Sensitive	5A	Common Stonefly	Perlidae	<i>Paragnetina media</i>
RBV-2020-036	6-Nov	15313	Harris Brook	SALEM	Moderately Sensitive	9	Common Net Spinner Caddisfly	Hydropsychidae	<i>Cheumatopsyche sp.</i>
RBV-2020-036	6-Nov	15313	Harris Brook	SALEM	Moderately Sensitive	9	Common Net Spinner Caddisfly	Hydropsychidae	<i>Hydropsyche sparna</i>
RBV-2020-036	6-Nov	15313	Harris Brook	SALEM	Moderately Sensitive	10	Fingernet Caddisfly	Philopotamidae	<i>Chimarra aterrima</i>
RBV-2020-036	6-Nov	15313	Harris Brook	SALEM	Moderately Sensitive	11	Flatheaded Mayfly	Heptageniidae	<i>Maccaffertium modestum</i>
RBV-2020-036	6-Nov	15313	Harris Brook	SALEM	Moderately Sensitive	13	Dobsonfly or Fishfly	Corydalidae	<i>Corydalus cornutus</i>
RBV-2020-036	6-Nov	15313	Harris Brook	SALEM	Moderately Sensitive	13	Dobsonfly or Fishfly	Corydalidae	<i>Nigronia serricornis</i>
RBV-2020-036	6-Nov	15313	Harris Brook	SALEM	Moderately Sensitive	14A	Dragonfly	Gomphidae	<i>Ophiogomphus sp.</i>
RBV-2020-036	6-Nov	15313	Harris Brook	SALEM	Moderately Sensitive	14B	Damselfly	Calopterygidae	<i>Calopteryx sp.</i>
RBV-2020-036	6-Nov	15313	Harris Brook	SALEM	Least Sensitive	21	Aquatic Worm	Oligochaeta	Oligochaeta
RBV-2020-036	6-Nov	15313	Harris Brook	SALEM	Other	23	Crane Fly	Tipulidae	<i>Tipula sp.</i>
RBV-2020-037	24-Oct	16617	EAST BRANCH EIGHTMILE RIVER	SALEM	Most Sensitive	2	"Brush Legged" Mayfly	Isonychiidae	<i>Isonychia sp.</i>
RBV-2020-037	24-Oct	16617	EAST BRANCH EIGHTMILE RIVER	SALEM	Most Sensitive	5A	Common Stonefly	Perlidae	<i>Acroneuria abnormis</i>
RBV-2020-037	24-Oct	16617	EAST BRANCH EIGHTMILE RIVER	SALEM	Most Sensitive	5A	Common Stonefly	Perlidae	<i>Paragnetina media</i>
RBV-2020-037	24-Oct	16617	EAST BRANCH EIGHTMILE RIVER	SALEM	Moderately Sensitive	10	Fingernet Caddisfly	Philopotamidae	<i>Chimarra aterrima</i>
RBV-2020-037	24-Oct	16617	EAST BRANCH EIGHTMILE RIVER	SALEM	Moderately Sensitive	11	Flatheaded Mayfly	Heptageniidae	<i>Maccaffertium modestum</i>
RBV-2020-037	24-Oct	16617	EAST BRANCH EIGHTMILE RIVER	SALEM	Moderately Sensitive	11	Flatheaded Mayfly	Heptageniidae	<i>Maccaffertium vicarium</i>
RBV-2020-037	24-Oct	16617	EAST BRANCH EIGHTMILE RIVER	SALEM	Moderately Sensitive	12	Water Penny	Psephenidae	<i>Psephenus herricki</i>
RBV-2020-037	24-Oct	16617	EAST BRANCH EIGHTMILE RIVER	SALEM	Moderately Sensitive	13	Dobsonfly or Fishfly	Corydalidae	<i>Corydalus cornutus</i>
RBV-2020-037	24-Oct	16617	EAST BRANCH EIGHTMILE RIVER	SALEM	Moderately Sensitive	13	Dobsonfly or Fishfly	Corydalidae	<i>Nigronia serricornis</i>
RBV-2020-037	24-Oct	16617	EAST BRANCH EIGHTMILE RIVER	SALEM	Other	23	Crane Fly	Tipulidae	<i>Tipula sp.</i>
RBV-2020-037	24-Oct	16617	EAST BRANCH EIGHTMILE RIVER	SALEM	Other	26	Aquatic Snipe Fly	Athericidae	<i>Atherix sp.</i>
RBV-2020-037	24-Oct	16617	EAST BRANCH EIGHTMILE RIVER	SALEM	Other	Misc. Other	Misc. Caddisfly	Brachycentridae	<i>Brachycentrus numerosus</i>
RBV-2020-038	24-Oct	15312	Beaver Brook	LYME	Most Sensitive	5A	Common Stonefly	Perlidae	<i>Acroneuria abnormis</i>
RBV-2020-038	24-Oct	15312	Beaver Brook	LYME	Most Sensitive	5A	Common Stonefly	Perlidae	<i>Paragnetina media</i>
RBV-2020-038	24-Oct	15312	Beaver Brook	LYME	Moderately Sensitive	9	Common Net Spinner Caddisfly	Hydropsychidae	<i>Hydropsyche betteni</i>
RBV-2020-038	24-Oct	15312	Beaver Brook	LYME	Moderately Sensitive	11	Flatheaded Mayfly	Heptageniidae	<i>Maccaffertium sp.</i>
RBV-2020-038	24-Oct	15312	Beaver Brook	LYME	Moderately Sensitive	13	Dobsonfly or Fishfly	Corydalidae	<i>Corydalus cornutus</i>
RBV-2020-038	24-Oct	15312	Beaver Brook	LYME	Moderately Sensitive	13	Dobsonfly or Fishfly	Corydalidae	<i>Nigronia serricornis</i>
RBV-2020-038	24-Oct	15312	Beaver Brook	LYME	Moderately Sensitive	14A	Dragonfly	Aeshnidae	<i>Boyeria vinosa</i>

Sample ID	Date	Station	Waterbody	Town	Category	Panel	Common Name	RBV Taxa	Detailed Organism ID
RBV-2020-038	24-Oct	15312	Beaver Brook	LYME	Moderately Sensitive	14A	Dragonfly	Gomphidae	<i>Ophiogomphus mainensis</i>
RBV-2020-038	24-Oct	15312	Beaver Brook	LYME	Other	26	Aquatic Snipe Fly	Athericidae	<i>Atherix sp.</i>
RBV-2020-038	24-Oct	15312	Beaver Brook	LYME	Other	Misc. Other	Toe Winged Beetle	Ptilodactylidae	<i>Anchytarsus bicolor</i>
RBV-2020-038	24-Oct	15312	Beaver Brook	LYME	Other	Misc. Other	Misc. Mayfly	Leptophlebiidae	<i>Neoleptophlebia sp.</i>
RBV-2020-038	24-Oct	15312	Beaver Brook	LYME	Other	Misc. Other	Misc. Caddisfly	Odontoceridae	<i>Psilotreta sp.</i>
RBV-2020-039	12-Sep	16999	RAYMOND BROOK	HEBRON	Most Sensitive	2	"Brush Legged" Mayfly	Isonychiidae	<i>Isonychia sp.</i>
RBV-2020-039	12-Sep	16999	RAYMOND BROOK	HEBRON	Most Sensitive	5A	Common Stonefly	Perlidae	<i>Acroneuria abnormis</i>
RBV-2020-039	12-Sep	16999	RAYMOND BROOK	HEBRON	Moderately Sensitive	9	Common Net Spinner Caddisfly	Hydropsychidae	<i>Hydropsyche betteni</i>
RBV-2020-039	12-Sep	16999	RAYMOND BROOK	HEBRON	Moderately Sensitive	10	Fingernet Caddisfly	Philopotamidae	<i>Chimarra aterrima</i>
RBV-2020-039	12-Sep	16999	RAYMOND BROOK	HEBRON	Moderately Sensitive	11	Flatheaded Mayfly	Heptageniidae	<i>Maccaffertium vicarium</i>
RBV-2020-039	12-Sep	16999	RAYMOND BROOK	HEBRON	Moderately Sensitive	12	Water Penny	Psephenidae	<i>Psephenus herricki</i>
RBV-2020-039	12-Sep	16999	RAYMOND BROOK	HEBRON	Moderately Sensitive	13	Dobsonfly or Fishfly	Corydalidae	<i>Nigronia serricornis</i>
RBV-2020-039	12-Sep	16999	RAYMOND BROOK	HEBRON	Moderately Sensitive	14A	Dragonfly	Gomphidae	<i>Ophiogomphus sp.</i>
RBV-2020-039	12-Sep	16999	RAYMOND BROOK	HEBRON	Least Sensitive	20	Freshwater Snail	Lymnaeidae	<i>Pseudosuccinea columella</i>
RBV-2020-039	12-Sep	16999	RAYMOND BROOK	HEBRON	Other	23	Crane Fly	Tipulidae	<i>Tipula sp.</i>
RBV-2020-039	12-Sep	16999	RAYMOND BROOK	HEBRON	Other	24	Riffle Beetle	Elmidae	<i>Stenelmis sp.</i>
RBV-2020-039	12-Sep	16999	RAYMOND BROOK	HEBRON	Other	24	Riffle Beetle	Elmidae	<i>Stenelmis sp.</i>
RBV-2020-039	12-Sep	16999	RAYMOND BROOK	HEBRON	Other	26	Aquatic Snipe Fly	Athericidae	<i>Atherix sp.</i>
RBV-2020-039	12-Sep	16999	RAYMOND BROOK	HEBRON	Other	Misc. Other	Misc. Caddisfly	Brachycentridae	<i>Brachycentrus appalachia</i>
RBV-2020-039	12-Sep	16999	RAYMOND BROOK	HEBRON	Other	Misc. Other	Misc. Mayfly	Leptophlebiidae	<i>Neoleptophlebia sp.</i>
RBV-2020-039	12-Sep	16999	RAYMOND BROOK	HEBRON	Other	Misc. Other	Misc. Caddisfly	Odontoceridae	<i>Psilotreta sp.</i>
RBV-2020-040	19-Sep	18871	Moodus River	EAST HADDAM	Most Sensitive	5A	Common Stonefly	Perlidae	<i>Paragnetina media</i>
RBV-2020-040	19-Sep	18871	Moodus River	EAST HADDAM	Moderately Sensitive	9	Common Net Spinner Caddisfly	Hydropsychidae	<i>Hydropsyche betteni</i>
RBV-2020-040	19-Sep	18871	Moodus River	EAST HADDAM	Moderately Sensitive	9	Common Net Spinner Caddisfly	Hydropsychidae	<i>Hydropsyche bronta</i>
RBV-2020-040	19-Sep	18871	Moodus River	EAST HADDAM	Moderately Sensitive	9	Common Net Spinner Caddisfly	Hydropsychidae	<i>Hydropsyche sparna</i>
RBV-2020-040	19-Sep	18871	Moodus River	EAST HADDAM	Moderately Sensitive	10	Fingernet Caddisfly	Philopotamidae	<i>Chimarra aterrima</i>
RBV-2020-040	19-Sep	18871	Moodus River	EAST HADDAM	Moderately Sensitive	11	Flatheaded Mayfly	Heptageniidae	<i>Maccaffertium modestum</i>
RBV-2020-040	19-Sep	18871	Moodus River	EAST HADDAM	Moderately Sensitive	12	Water Penny	Psephenidae	<i>Psephenus herricki</i>
RBV-2020-040	19-Sep	18871	Moodus River	EAST HADDAM	Moderately Sensitive	13	Dobsonfly or Fishfly	Corydalidae	<i>Nigronia serricornis</i>
RBV-2020-040	19-Sep	18871	Moodus River	EAST HADDAM	Moderately Sensitive	14A	Dragonfly	Aeshnidae	<i>Boyeria vinosa</i>
RBV-2020-040	19-Sep	18871	Moodus River	EAST HADDAM	Least Sensitive	15	Amphipod ("Scud")	Amphipoda	<i>Gammarus sp.</i>
RBV-2020-040	19-Sep	18871	Moodus River	EAST HADDAM	Least Sensitive	19	Black Fly	Simuliidae	<i>Simulium sp.</i>
RBV-2020-040	19-Sep	18871	Moodus River	EAST HADDAM	Least Sensitive	20	Freshwater Snail	Planorbidae	<i>Laevapex fuscus</i>

Sample ID	Date	Station	Waterbody	Town	Category	Panel	Common Name	RBV Taxa	Detailed Organism ID
RBV-2020-040	19-Sep	18871	Moodus River	EAST HADDAM	Least Sensitive	21	Aquatic Worm	Oligochaeta	Oligochaeta
RBV-2020-040	19-Sep	18871	Moodus River	EAST HADDAM	Other	23	Crane Fly	Tipulidae	<i>Tipula sp.</i>
RBV-2020-040	19-Sep	18871	Moodus River	EAST HADDAM	Other	25	Small Minnow Mayfly	Baetidae	<i>Baetis tricaudatus</i>
RBV-2020-040	19-Sep	18871	Moodus River	EAST HADDAM	Other	25	Small Minnow Mayfly	Baetidae	<i>Heterocloeon sp.</i>
RBV-2020-040	19-Sep	18871	Moodus River	EAST HADDAM	Other	25	Small Minnow Mayfly	Baetidae	<i>Plauditus sp.</i>
RBV-2020-040	19-Sep	18871	Moodus River	EAST HADDAM	Other	Misc. Other	Water Mite	Lebertiidae	<i>Lebertia sp.</i>
RBV-2020-041	25-Sep	20507	Jeremy River	COLCHESTER	Most Sensitive	2	"Brush Legged" Mayfly	Isonychiidae	<i>Isonychia sp.</i>
RBV-2020-041	25-Sep	20507	Jeremy River	COLCHESTER	Most Sensitive	5A	Common Stonefly	Perlidae	<i>Acroneuria abnormis</i>
RBV-2020-041	25-Sep	20507	Jeremy River	COLCHESTER	Most Sensitive	5A	Common Stonefly	Perlidae	<i>Paragnetina media</i>
RBV-2020-041	25-Sep	20507	Jeremy River	COLCHESTER	Moderately Sensitive	9	Common Net Spinner Caddisfly	Hydropsychidae	<i>Hydropsyche morosa</i>
RBV-2020-041	25-Sep	20507	Jeremy River	COLCHESTER	Moderately Sensitive	9	Common Net Spinner Caddisfly	Hydropsychidae	<i>Hydropsyche sparna</i>
RBV-2020-041	25-Sep	20507	Jeremy River	COLCHESTER	Moderately Sensitive	10	Fingernet Caddisfly	Philopotamidae	<i>Chimarra aterrima</i>
RBV-2020-041	25-Sep	20507	Jeremy River	COLCHESTER	Moderately Sensitive	12	Water Penny	Psephenidae	<i>Psephenus herricki</i>
RBV-2020-041	25-Sep	20507	Jeremy River	COLCHESTER	Moderately Sensitive	13	Dobsonfly or Fishfly	Corydalidae	<i>Corydalus cornutus</i>
RBV-2020-041	25-Sep	20507	Jeremy River	COLCHESTER	Moderately Sensitive	14A	Dragonfly	Gomphidae	Gomphidae
RBV-2020-041	25-Sep	20507	Jeremy River	COLCHESTER	Moderately Sensitive	14A	Dragonfly	Gomphidae	<i>Ophiogomphus sp.</i>
RBV-2020-041	25-Sep	20507	Jeremy River	COLCHESTER	Least Sensitive	21	Aquatic Worm	Oligochaeta	Oligochaeta
RBV-2020-041	25-Sep	20507	Jeremy River	COLCHESTER	Other	24	Riffle Beetle	Elmidae	<i>Stenelmis sp.</i>
RBV-2020-041	25-Sep	20507	Jeremy River	COLCHESTER	Other	25	Small Minnow Mayfly	Baetidae	<i>Acentrella turbida</i>
RBV-2020-041	25-Sep	20507	Jeremy River	COLCHESTER	Other	25	Small Minnow Mayfly	Baetidae	<i>Baetis intercalaris</i>
RBV-2020-041	25-Sep	20507	Jeremy River	COLCHESTER	Other	25	Small Minnow Mayfly	Baetidae	<i>Plauditus sp.</i>
RBV-2020-041	25-Sep	20507	Jeremy River	COLCHESTER	Other	26	Aquatic Snipe Fly	Athericidae	<i>Atherix sp.</i>
RBV-2020-041	25-Sep	20507	Jeremy River	COLCHESTER	Other	Misc. Other	Water Mite	Limnococharidae	<i>Rhyncholimnochares sp.</i>
RBV-2020-042	3-Oct	14137	Blackledge River	MARLBOROUGH	Most Sensitive	2	"Brush Legged" Mayfly	Isonychiidae	<i>Isonychia sp.</i>
RBV-2020-042	3-Oct	14137	Blackledge River	MARLBOROUGH	Most Sensitive	5A	Common Stonefly	Perlidae	<i>Acroneuria abnormis</i>
RBV-2020-042	3-Oct	14137	Blackledge River	MARLBOROUGH	Most Sensitive	5A	Common Stonefly	Perlidae	Perlidae
RBV-2020-042	3-Oct	14137	Blackledge River	MARLBOROUGH	Most Sensitive	5C	Perlotid Stonefly	Perlotidae	<i>Isogenoides sp.</i>
RBV-2020-042	3-Oct	14137	Blackledge River	MARLBOROUGH	Moderately Sensitive	9	Common Net Spinner Caddisfly	Hydropsychidae	<i>Cheumatopsyche sp.</i>
RBV-2020-042	3-Oct	14137	Blackledge River	MARLBOROUGH	Moderately Sensitive	9	Common Net Spinner Caddisfly	Hydropsychidae	<i>Hydropsyche betteni</i>
RBV-2020-042	3-Oct	14137	Blackledge River	MARLBOROUGH	Moderately Sensitive	9	Common Net Spinner Caddisfly	Hydropsychidae	<i>Hydropsyche morosa</i>
RBV-2020-042	3-Oct	14137	Blackledge River	MARLBOROUGH	Moderately Sensitive	11	Flatheaded Mayfly	Heptageniidae	Heptageniidae
RBV-2020-042	3-Oct	14137	Blackledge River	MARLBOROUGH	Moderately Sensitive	11	Flatheaded Mayfly	Heptageniidae	<i>Maccaffertium modestum</i>
RBV-2020-042	3-Oct	14137	Blackledge River	MARLBOROUGH	Moderately Sensitive	11	Flatheaded Mayfly	Heptageniidae	<i>Maccaffertium vicarium</i>

Sample ID	Date	Station	Waterbody	Town	Category	Panel	Common Name	RBV Taxa	Detailed Organism ID
RBV-2020-042	3-Oct	14137	Blackledge River	MARLBOROUGH	Moderately Sensitive	12	Water Penny	Psephenidae	<i>Psephenus herricki</i>
RBV-2020-042	3-Oct	14137	Blackledge River	MARLBOROUGH	Moderately Sensitive	13	Dobsonfly or Fishfly	Corydalidae	<i>Corydalus cornutus</i>
RBV-2020-042	3-Oct	14137	Blackledge River	MARLBOROUGH	Moderately Sensitive	13	Dobsonfly or Fishfly	Corydalidae	<i>Nigronia serricornis</i>
RBV-2020-042	3-Oct	14137	Blackledge River	MARLBOROUGH	Moderately Sensitive	14A	Dragonfly	Gomphidae	<i>Ophiogomphus sp.</i>
RBV-2020-042	3-Oct	14137	Blackledge River	MARLBOROUGH	Other	25	Small Minnow Mayfly	Baetidae	<i>Baetis intercalaris</i>
RBV-2020-042	3-Oct	14137	Blackledge River	MARLBOROUGH	Other	26	Aquatic Snipe Fly	Athericidae	<i>Atherix sp.</i>
RBV-2020-042	3-Oct	14137	Blackledge River	MARLBOROUGH	Other	Misc. Other	Misc. Caddisfly	Brachycentridae	<i>Brachycentrus appalachia</i>
RBV-2020-042	3-Oct	14137	Blackledge River	MARLBOROUGH	Other	Misc. Other	Misc. Caddisfly	Odontoceridae	<i>Psilotreta sp.</i>
RBV-2020-043	11-Oct	17015	SAFSTROM BROOK	EAST HAMPTON	Most Sensitive	4	Roach-Like Stonefly	Peltoperlidae	<i>Tallaperla sp.</i>
RBV-2020-043	11-Oct	17015	SAFSTROM BROOK	EAST HAMPTON	Most Sensitive	5A	Common Stonefly	Perlidae	<i>Acroneuria sp.</i>
RBV-2020-043	11-Oct	17015	SAFSTROM BROOK	EAST HAMPTON	Most Sensitive	5A	Common Stonefly	Perlidae	<i>Paragnetina media</i>
RBV-2020-043	11-Oct	17015	SAFSTROM BROOK	EAST HAMPTON	Moderately Sensitive	9	Common Net Spinner Caddisfly	Hydropsychidae	<i>Hydropsyche betteni</i>
RBV-2020-043	11-Oct	17015	SAFSTROM BROOK	EAST HAMPTON	Moderately Sensitive	9	Common Net Spinner Caddisfly	Hydropsychidae	<i>Hydropsyche sp.</i>
RBV-2020-043	11-Oct	17015	SAFSTROM BROOK	EAST HAMPTON	Moderately Sensitive	10	Fingernet Caddisfly	Philopotamidae	<i>Chimarra aterrima</i>
RBV-2020-043	11-Oct	17015	SAFSTROM BROOK	EAST HAMPTON	Moderately Sensitive	10	Fingernet Caddisfly	Philopotamidae	<i>Dolophilodes sp.</i>
RBV-2020-043	11-Oct	17015	SAFSTROM BROOK	EAST HAMPTON	Moderately Sensitive	13	Dobsonfly or Fishfly	Corydalidae	<i>Nigronia serricornis</i>
RBV-2020-043	11-Oct	17015	SAFSTROM BROOK	EAST HAMPTON	Moderately Sensitive	14A	Dragonfly	Aeshnidae	<i>Boyeria vinosa</i>
RBV-2020-043	11-Oct	17015	SAFSTROM BROOK	EAST HAMPTON	Moderately Sensitive	14A	Dragonfly	Gomphidae	<i>Stylogomphus albistylus</i>
RBV-2020-043	11-Oct	17015	SAFSTROM BROOK	EAST HAMPTON	Other	23	Crane Fly	Tipulidae	<i>Tipula sp.</i>
RBV-2020-043	11-Oct	17015	SAFSTROM BROOK	EAST HAMPTON	Other	24	Rifle Beetle	Elmidae	<i>Stenelmis sp.</i>
RBV-2020-043	11-Oct	17015	SAFSTROM BROOK	EAST HAMPTON	Other	Misc. Other	Misc. Caddisfly	Brachycentridae	<i>Brachycentrus appalachia</i>
RBV-2020-044	25-Oct	20508	Pine Brook	HADDAM	Most Sensitive	5A	Common Stonefly	Perlidae	<i>Acroneuria carolinensis</i>
RBV-2020-044	25-Oct	20508	Pine Brook	HADDAM	Most Sensitive	5A	Common Stonefly	Perlidae	<i>Acroneuria sp.</i>
RBV-2020-044	25-Oct	20508	Pine Brook	HADDAM	Moderately Sensitive	9	Common Net Spinner Caddisfly	Hydropsychidae	<i>Hydropsyche betteni</i>
RBV-2020-044	25-Oct	20508	Pine Brook	HADDAM	Moderately Sensitive	10	Fingernet Caddisfly	Philopotamidae	<i>Chimarra aterrima</i>
RBV-2020-044	25-Oct	20508	Pine Brook	HADDAM	Moderately Sensitive	11	Flatheaded Mayfly	Heptageniidae	<i>Maccaffertium vicarium</i>
RBV-2020-044	25-Oct	20508	Pine Brook	HADDAM	Moderately Sensitive	12	Water Penny	Psephenidae	<i>Psephenus herricki</i>
RBV-2020-044	25-Oct	20508	Pine Brook	HADDAM	Moderately Sensitive	13	Dobsonfly or Fishfly	Corydalidae	<i>Nigronia serricornis</i>
RBV-2020-044	25-Oct	20508	Pine Brook	HADDAM	Moderately Sensitive	14A	Dragonfly	Gomphidae	<i>Ophiogomphus sp.</i>
RBV-2020-044	25-Oct	20508	Pine Brook	HADDAM	Least Sensitive	18	Non-Biting Midge	Chironomidae	Chironomidae
RBV-2020-044	25-Oct	20508	Pine Brook	HADDAM	Other	23	Crane Fly	Tipulidae	<i>Dicranota sp.</i>
RBV-2020-044	25-Oct	20508	Pine Brook	HADDAM	Other	23	Crane Fly	Tipulidae	<i>Hexatoma sp.</i>
RBV-2020-044	25-Oct	20508	Pine Brook	HADDAM	Other	24	Rifle Beetle	Elmidae	<i>Stenelmis sp.</i>

Sample ID	Date	Station	Waterbody	Town	Category	Panel	Common Name	RBV Taxa	Detailed Organism ID
RBV-2020-044	25-Oct	20508	Pine Brook	HADDAM	Other	Misc. Other	Misc. Caddisfly	Brachycentridae	<i>Brachycentrus appalachia</i>
RBV-2020-044	25-Oct	20508	Pine Brook	HADDAM	Other	Misc. Other	Misc. Mayfly	Ephemerelellidae	<i>Ephemerella sp.</i>
RBV-2020-044	25-Oct	20508	Pine Brook	HADDAM	Other	Misc. Other	Misc. Mayfly	Leptophlebiidae	<i>Leptophlebia sp.</i>
RBV-2020-044	25-Oct	20508	Pine Brook	HADDAM	Other	Misc. Other	Misc. Caddisfly	Odontoceridae	<i>Psilotreta sp.</i>
RBV-2020-044	25-Oct	20508	Pine Brook	HADDAM	Other	Misc. Other	Alderfly	Sialidae	<i>Sialis sp.</i>
RBV-2020-045	30-Nov	20509	Elbow Brook	EAST HAMPTON	Most Sensitive	5A	Common Stonefly	Perlidae	<i>Acroneuria abnormis</i>
RBV-2020-045	30-Nov	20509	Elbow Brook	EAST HAMPTON	Most Sensitive	5A	Common Stonefly	Perlidae	<i>Acroneuria sp.</i>
RBV-2020-045	30-Nov	20509	Elbow Brook	EAST HAMPTON	Most Sensitive	5A	Common Stonefly	Perlidae	<i>Eccoptura xanthenes</i>
RBV-2020-045	30-Nov	20509	Elbow Brook	EAST HAMPTON	Most Sensitive	5C	Green Stonefly	Chloroperlidae	Chloroperlidae
RBV-2020-045	30-Nov	20509	Elbow Brook	EAST HAMPTON	Most Sensitive	5C	Small Winter Stonefly	Capniidae	<i>Paracapnia sp.</i>
RBV-2020-045	30-Nov	20509	Elbow Brook	EAST HAMPTON	Moderately Sensitive	9	Common Net Spinner Caddisfly	Hydropsychidae	<i>Cheumatopsyche sp.</i>
RBV-2020-045	30-Nov	20509	Elbow Brook	EAST HAMPTON	Moderately Sensitive	9	Common Net Spinner Caddisfly	Hydropsychidae	<i>Hydropsyche betteni</i>
RBV-2020-045	30-Nov	20509	Elbow Brook	EAST HAMPTON	Moderately Sensitive	10	Fingernet Caddisfly	Philopotamidae	<i>Chimarra aterrima</i>
RBV-2020-045	30-Nov	20509	Elbow Brook	EAST HAMPTON	Moderately Sensitive	11	Flatheaded Mayfly	Heptageniidae	<i>Maccaffertium modestum</i>
RBV-2020-045	30-Nov	20509	Elbow Brook	EAST HAMPTON	Moderately Sensitive	11	Flatheaded Mayfly	Heptageniidae	<i>Maccaffertium pudicum</i>
RBV-2020-045	30-Nov	20509	Elbow Brook	EAST HAMPTON	Moderately Sensitive	11	Flatheaded Mayfly	Heptageniidae	<i>Maccaffertium sp.</i>
RBV-2020-045	30-Nov	20509	Elbow Brook	EAST HAMPTON	Moderately Sensitive	12	Water Penny	Psephenidae	<i>Psephenus herricki</i>
RBV-2020-045	30-Nov	20509	Elbow Brook	EAST HAMPTON	Moderately Sensitive	13	Dobsonfly or Fishfly	Corydalidae	<i>Nigronia serricornis</i>
RBV-2020-045	30-Nov	20509	Elbow Brook	EAST HAMPTON	Least Sensitive	15	Amphipod ("Scud")	Amphipoda	<i>Gammarus sp.</i>
RBV-2020-045	30-Nov	20509	Elbow Brook	EAST HAMPTON	Least Sensitive	18	Non-Biting Midge	Chironomidae	Chironomidae
RBV-2020-045	30-Nov	20509	Elbow Brook	EAST HAMPTON	Least Sensitive	20	Freshwater Snail	Physidae	<i>Physa sp.</i>
RBV-2020-045	30-Nov	20509	Elbow Brook	EAST HAMPTON	Least Sensitive	20	Freshwater Snail	Planorbidae	<i>Planorbella sp.</i>
RBV-2020-045	30-Nov	20509	Elbow Brook	EAST HAMPTON	Other	23	Crane Fly	Tipulidae	<i>Dicranota sp.</i>
RBV-2020-045	30-Nov	20509	Elbow Brook	EAST HAMPTON	Other	23	Crane Fly	Tipulidae	<i>Hexatoma sp.</i>
RBV-2020-045	30-Nov	20509	Elbow Brook	EAST HAMPTON	Other	23	Crane Fly	Tipulidae	<i>Tipula sp.</i>
RBV-2020-045	30-Nov	20509	Elbow Brook	EAST HAMPTON	Other	Misc. Other	Misc. Caddisfly	Polycentropodidae	<i>Polycentropus sp.</i>
RBV-2020-045	30-Nov	20509	Elbow Brook	EAST HAMPTON	Other	Misc. Other	Misc. Caddisfly	Odontoceridae	<i>Psilotreta sp.</i>
RBV-2020-045	30-Nov	20509	Elbow Brook	EAST HAMPTON	Other	Misc. Other	Misc. Caddisfly	Limnephilidae	<i>Pycnopsyche sp.</i>
RBV-2020-046	17-Oct	15764	Deep Brook	NEWTOWN	Most Sensitive	2	"Brush Legged" Mayfly	Isonychiidae	<i>Isonychia sp.</i>
RBV-2020-046	17-Oct	15764	Deep Brook	NEWTOWN	Moderately Sensitive	9	Common Net Spinner Caddisfly	Hydropsychidae	<i>Cheumatopsyche sp.</i>
RBV-2020-046	17-Oct	15764	Deep Brook	NEWTOWN	Moderately Sensitive	9	Common Net Spinner Caddisfly	Hydropsychidae	<i>Diplectrona modesta</i>
RBV-2020-046	17-Oct	15764	Deep Brook	NEWTOWN	Least Sensitive	16	Aquatic Sowbug	Isopoda	<i>Caecidotea sp.</i>
RBV-2020-046	17-Oct	15764	Deep Brook	NEWTOWN	Least Sensitive	21	Aquatic Worm	Oligochaeta	Oligochaeta

Sample ID	Date	Station	Waterbody	Town	Category	Panel	Common Name	RBV Taxa	Detailed Organism ID
RBV-2020-046	17-Oct	15764	Deep Brook	NEWTOWN	Other	23	Crane Fly	Tipulidae	<i>Tipula sp.</i>
RBV-2020-046	17-Oct	15764	Deep Brook	NEWTOWN	Other	Misc. Other	Small Water Strider	Veliidae	<i>Rhagovelia sp.</i>
RBV-2020-047	9-Nov	15707	Deep Brook	NEWTOWN	Most Sensitive	2	"Brush Legged" Mayfly	Isonychiidae	<i>Isonychia sp.</i>
RBV-2020-047	9-Nov	15707	Deep Brook	NEWTOWN	Most Sensitive	5A	Common Stonefly	Perlidae	<i>Acroneuria abnormis</i>
RBV-2020-047	9-Nov	15707	Deep Brook	NEWTOWN	Most Sensitive	5C	Small Winter Stonefly	Capniidae	<i>Allocapnia sp.</i>
RBV-2020-047	9-Nov	15707	Deep Brook	NEWTOWN	Moderately Sensitive	9	Common Net Spinner Caddisfly	Hydropsychidae	<i>Cheumatopsyche sp.</i>
RBV-2020-047	9-Nov	15707	Deep Brook	NEWTOWN	Moderately Sensitive	10	Fingernet Caddisfly	Philopotamidae	<i>Chimarra aterrima</i>
RBV-2020-047	9-Nov	15707	Deep Brook	NEWTOWN	Moderately Sensitive	11	Flatheaded Mayfly	Heptageniidae	<i>Maccaffertium modestum</i>
RBV-2020-047	9-Nov	15707	Deep Brook	NEWTOWN	Moderately Sensitive	12	Water Penny	Psephenidae	<i>Psephenus herricki</i>
RBV-2020-047	9-Nov	15707	Deep Brook	NEWTOWN	Moderately Sensitive	13	Dobsonfly or Fishfly	Corydalidae	<i>Nigronia serricornis</i>
RBV-2020-047	9-Nov	15707	Deep Brook	NEWTOWN	Least Sensitive	21	Aquatic Worm	Oligochaeta	Oligochaeta
RBV-2020-047	9-Nov	15707	Deep Brook	NEWTOWN	Other	23	Crane Fly	Tipulidae	<i>Tipula sp.</i>



CT Department of Energy & Environmental Protection
Riffle Bioassessment by Volunteers
Volunteer Water Quality Monitoring Program



2020 Annual Summary Report
(Report #22)

<https://portal.ct.gov/DEEP-RBVProgram>